

Has Consumption Inequality Mirrored Income Inequality?[†]

By MARK AGUIAR AND MARK BILS*

We revisit to what extent the increase in income inequality since 1980 was mirrored by consumption inequality. We do so by constructing an alternative measure of consumption expenditure using a demand system to correct for systematic measurement error in the Consumer Expenditure Survey. Our estimation exploits the relative expenditure of high- and low-income households on luxuries versus necessities. This double differencing corrects for measurement error that can vary over time by good and income. We find consumption inequality tracked income inequality much more closely than estimated by direct responses on expenditures. (JEL D31, D63, E21)

We revisit the issue of whether the increase in income inequality over the last 30 years has translated into a quantitatively similar increase in consumption inequality. Contrary to several influential studies discussed below, we find that consumption inequality has tracked income inequality. Like most of the previous literature that argues the opposite, we base our conclusions on the Consumer Expenditure Survey's (CE) interview survey. But rather than measure consumption inequality directly by summing household expenditures, we base our measure of consumption inequality on how richer versus poorer households allocate spending across goods. In particular, we estimate relative consumption growth across income groups by observing how households in these groups have shifted their expenditures toward luxuries versus necessities over time. We show our approach is robust to systematic trends in measurement error that may bias measures based on summing household spending. We find a substantial increase in consumption inequality, similar in magnitude to the increase in income inequality.

An influential paper by Krueger and Perri (2006), building on related work by Slesnick (2001), uses the CE to argue that consumption inequality has not kept pace with income inequality.¹ In an exercise comparable to Krueger and Perri's, we show that both relative before and after-tax income inequality increased by about 33 percent (0.33 log points) between 1980 and 2010, where our conservative measure of

*Aguiar: Department of Economics, Fisher Hall, Princeton University, Princeton, NJ 08544, and NBER (e-mail: mark@markaguiar.com); Bils: Department of Economics, Harkness Hall, University of Rochester, Rochester, NY 14627, and NBER (e-mail: mark.bils@gmail.com). We thank Yu Liu for outstanding research assistance. The authors declare that they have no relevant or material financial interests that relate to the research described in this paper.

[†]Go to <http://dx.doi.org/10.1257/aer.20120599> to visit the article page for additional materials and author disclosure statement(s).

¹For other contributions to this literature, see Blundell and Preston (1998); Blundell, Pistaferri, and Preston (2008); and Heathcote, Perri, and Violante (2010).

income inequality is the ratio of those in the eightieth to ninety-fifth percentiles to those in the fifth to twentieth percentiles. Based on relative household expenditures, the corresponding increase in consumption inequality for the same two groups is only 11 percent.²

A concern with the CE evidence is the well-documented decline in aggregate consumption reported in the CE relative to national income and product account (NIPA) personal consumption expenditures (e.g., Garner et al. 2006). Aggregate expenditures reported by CE households for 1980–1982, excluding health care, equaled 86 percent of that implied by NIPA. By 2008–2010 this ratio fell to only 66 percent.³ This does not necessarily imply that the CE fails to capture trends in consumption inequality. If the CE's underreporting is uniform across income groups, then the mis-measurement will not bias ratio-based measures of consumption inequality. However, as we illustrate below, that scenario implies extreme shifts in relative saving rates from 1980 to 2010. In particular, the implied savings rate for low-income households must plummet from -23 to -59 percent of income. We document that the savings rates implied by reported expenditure (i.e., income minus expenditure) are inconsistent with the savings data households directly report in the CE; that is, the budget constraint does not hold. The failure of this consistency check motivates the need for an alternative measure of consumption inequality in the CE.

We measure consumption inequality based on how high- versus low-income households allocate spending toward luxuries versus necessities. Intuitively, if consumption inequality is increasing substantially over time, then higher income households will shift consumption toward luxuries more dramatically than lower income households. The key advantage of this approach is that it does not require that the overall expenditures of households be well measured. Starting from consistent estimates of a demand system (Engel curves), the ratio of spending across any two goods with different expenditure elasticities identifies the household's total expenditure. This estimate is clearly robust to household-specific multiplicative measurement error, since the ratio of expenditures will be unaffected. Inequality in consumption across income groups is then estimated by comparing their respective ratios. This estimate of inequality is robust not only to household-specific measurement errors (e.g., more severe underreporting by richer households), but also to good-specific measurement errors (more severe underreporting for some goods than others). Good-specific measurement errors are eliminated once differences are taken across households.

Our identification assumption is that, once we control for systematic mis-measurement at the good-time and income-time level, the residual measurement error at the household-good-time level is classical. In particular, it is orthogonal to that good's expenditure elasticity conditional on income group. This encompasses a wide range of residual measurement error. Nevertheless, there are scenarios that violate this assumption. For instance, suppose that from 1980 to 2010 high-income households began systematically to underreport spending on

²For the period 1980–2004, Krueger and Perri (2006) report a log change in the 90/10 income ratio of approximately 0.36 for income, and 0.16 for consumption.

³We exclude medical expenses from this calculation as the CE only reports a households' insurance premiums and other out-of-pocket expenditures, omitting health care expenses paid by other parties.

luxuries, but not necessities, whereas low-income households began underreporting spending on necessities, but not luxuries. Under this scenario, our approach would understate the true relative shift in spending by richer households toward luxuries, thereby understating the rise in consumption inequality. Under the reverse scenario (high-income stop reporting their spending on necessities, low-income stop reporting luxuries), our approach will overstate the rise in consumption inequality. We discuss this identification assumption (and when it may fail) at length at the end of Section IIA.

To illustrate our approach, take expenditures on nondurable entertainment (a luxury) versus food at home (a necessity). The top income quintile in the CE increased reported spending on entertainment by 25 percent relative to that for food at home between 1980–1982 to 2008–2010. Based on our estimated Engel elasticities, this implies an increase in total expenditure of 18 percent (see Figure 3). By contrast, the bottom income quintile reported that entertainment expenditures declined by 40 percent relative to that reported for food at home, suggesting a decline in total expenditure of 29 percent. Both these calculations are robust to income-specific measurement error in the CE, even if the error changes over time. But, if the CE captures less of actual entertainment expenditures over time, relative to food at home, then both these growth rates are biased downward. Log differencing the two rates eliminates that bias, implying an increase in inequality of 47 log points.

While food and entertainment are interesting due to their extreme expenditure elasticities, a major advantage of the CE data is that it offers detailed expenditures across nearly all categories of goods. We therefore implement this Engel curve approach using all goods in a regression framework to exploit this richness of the CE. Our estimates suggest that consumption inequality increased by a little more than 30 percent between 1980 and 2010, roughly as much as the change in income inequality, and nearly three times that estimated based on directly examining relative household expenditures in the CE. We find this estimate is stable across different subsets of goods, different weighting schemes across goods, and alternative first-stage elasticity estimates. The results imply a substantial trend in income-specific mis-measurement in the CE. Specifically, the estimation implies that relative under-measurement of high-income expenditure is growing over time, with an increase of about 20 log points over the entire sample.

We also consider trends in inequality in different sub-periods. We find that after-tax income inequality increased by 20 percent between 1980 and the early-1990s, by an additional 13 percent between 1993 and 2007, then remained stable through the Great Recession. The inequality in reported CE expenditures increased by only 11 percent in the first sub-period, by 6 percent from 1993 to 2007, then actually reversed (falling) by 6 percent from 2007 to 2010. This implies that reported consumption inequality fails to keep pace with income inequality in any of the three sub-periods. Using our demand system estimates, we find that consumption inequality increased by 17 percent between 1980 and the early-1990s, by an additional 18 percent through 2007, for a total increase of 35 percent, closely tracking the profile of income inequality. For the Great Recession we estimate a small reduction in consumption inequality of 4 percent.

We are not the first to reassess trends in consumption inequality, particularly with a focus on mis-measurement of CE interview expenditures. Battistin (2003) and

Attanasio, Battistin, and Ichimura (2007) use the diary component of the CE to correct for mis-measurement in the interview survey. They estimate that the interview survey underestimates the rise in consumption inequality significantly in the 1990s. Our paper is also complementary to Parker, Vissing-Jorgensen, and Ziebarth (2009), who focus on the gap between CE expenditures and those reported by NIPA to obtain a corrected estimate of consumption inequality. Most recently, Attanasio, Hurst, and Pistaferri (2012) document that the substantial increases in consumption inequality we report are consistent with other estimates of consumption inequality, including those derived from expenditures in the Panel Study of Income Dynamics (PSID), the CE diary survey, and reported vehicle expenditures.

There is a large literature concerning consumption inequality that precedes or is not focused on the issues raised by Slesnick (2001) and Krueger and Perri (2006). An important paper by Attanasio and Davis (1996) documents that the increase in the college premium observed for wages in the 1980s is mirrored by similar increases in consumption inequality. However, Attanasio and Davis (1996) do not address the relative trends within education groups, which is where Krueger and Perri (2006) show the conflict between income and consumption inequality trends is starkest. Other important papers in this earlier literature include Cutler and Katz (1992); Johnson and Shipp (1997); and Blundell and Preston (1998). Sabelhaus and Groen (2000) also discuss mis-measurement in the context of the relationship of consumption and income. There is also a large literature on consumption versus income inequality over the life cycle, starting with Deaton and Paxson (1994).⁴ These papers often use the CE for consumption data, and are therefore subject to the measurement error problems addressed in this paper. We leave the question of whether our approach has implications for trends in life cycle inequality to future research.

Browning and Crossley (2009) share our interest in measurement error and also employ an Engel-curve approach. Specifically, Browning and Crossley (2009) argue that multiple noisy measures can dominate a single, relatively accurate measure of household expenditure, building on the insight that the covariance of multiple measures may mitigate measurement error. For noisy measures they suggest using two categories of spending, each with Engel curve elasticities of one, so that the expected covariance of the two measures will be close to the variance of total expenditure. As an alternative, Browning and Crossley suggest employing a luxury and a necessity, rather than two luxuries or two necessities, again so the covariance of the two spending variables will be close to the variance of total expenditure. As an application they employ spending on food, including that at restaurants, as a necessity and entertainment expenditure as a luxury. Our approach shares a similar spirit, but exploits differencing across goods within a demand system rather than extracting a common source of variation from covariances. In particular, our methodology is designed to measure consumption inequality, which is not a focus of the Browning and Crossley analysis.

The use of Engel curves to infer total expenditure is often used when only a subset of expenditures is reported. For instance, Blundell, Pistaferri, and Preston

⁴See also, Storesletten, Telmer, and Yaron (2004); Heathcote, Storesletten, and Violante (2005); Guvenen (2007); Huggett, Ventura, and Yaron (2011); and Aguiar and Hurst (2013).

(2008)—henceforth, BPP—use the CE to estimate the demand for food conditional on prices, total nondurable expenditure, and demographics, and then invert this to map the PSID's food expenditure series into an imputed measure of nondurable consumption. In addition to a related methodology, BPP shares our interest in the cross section of consumption. BPP use income measures from the PSID to argue that the variance of both permanent and transitory income shocks increased in the 1980s. This is consistent with several other studies based on earnings data (for example, Gottschalk and Moffitt 1994, 2009; Heathcote, Perri, and Violante 2010). They use this finding to reconcile the gap between consumption and income inequality between 1980 and 1992, employing a specification that allows the data to determine the extent of insurance of permanent and transitory income shocks. Their estimates suggest that there is partial insurance for permanent shocks and almost complete insurance of transitory shocks, indicating somewhat more insurance against permanent income shocks than that implied by the standard incomplete markets permanent income model. See Kaplan and Violante (2010) on this point as well. Our measures of consumption inequality using reported CE data are consistent with BPP's imputed measures. To the extent that reported consumption is systematically mis-measured, our corrected measures of consumption inequality suggest less insurance of income shocks than that implied by reported expenditure. Alternatively, the PSID measures of income may provide an incomplete picture of the increase in permanent income risk. In this regard, several recent studies using administrative data have found a larger role for permanent income risk in explaining the increase in income inequality (for example, Kopczuk, Saez, and Song 2010; Dahl, DeLeire, and Schwabish 2011; DeBacker et al. 2013; Monti and Gathright 2013). While we do not take a stand on the permanent versus transitory nature of income inequality, we contribute to this literature by providing a methodology that adjusts measured consumption inequality for systematic measurement error, which could be used to shed light on the nature of uninsurable income risk.

Several papers find a smaller rise in consumption inequality than in income in other countries (for example, see the special *Review of Economic Dynamics* issue of January 2010 for studies of inequality in several countries). These studies may appear to contrast with our result that income and consumption inequality mirror each other in the United States. However, the studies of other economies are not necessarily inconsistent with our findings, given that there is no a priori reason that the underlying income dynamics are the same in all countries. In particular, the permanent-income paradigm may explain the difference between the United States and Europe. For example, Jappelli and Pistaferri (2010) document that in Italy between 1980 and 2006, transitory idiosyncratic income shocks rather than greater dispersion in the permanent wage structure explains the majority of the rise in income inequality. Similarly, using income data from the British Household Panel Data for 1991 to 2003, Blundell and Etheridge (2010) document a decline in the permanent component of income inequality relative to its transitory component.

The paper is organized as follows. Section I describes the data, documents trends in income and expenditure inequality, and analyzes the CE's savings data; Section II performs our demand-system analysis; Section III examines robustness to potential mis-specification, especially with respect to our Engel curve estimates; and Section IV concludes.

I. Data Description and Inequality Trends

In this section we describe our dataset and document trends in income and consumption inequality. The online data Appendix contains a more detailed discussion of variable construction and our sample.

A. Data

Our data are from the Consumer Expenditure Survey's interview sample. This is a well-known consumption survey that has been conducted continuously since 1980. We include waves starting in 1980 and extending through 2010. The survey is large, consisting of over 5,000 households in most waves. Each household is assigned a "replicate" weight designed to map the CE sample into the national population, which we use in all calculations. Each household is interviewed about their expenditures for up to four consecutive quarters. Each interview records expenditures on detailed categories over the preceding three months. The final interview records information on earnings, income, and taxes from the preceding 12 months, aligning with the period captured for expenditures. Income, expenditure, and savings variables are all recorded at the household level. However, when estimating household demand equations we include demographic dummy variables that reflect the number of household members, number of household earners, and the reference member's age.

The CE reports expenditure on hundreds of separate items. We aggregate these into 20 groups, which are listed in Table 2. The division of expenditures into groups is governed by several criteria. The first is to respect BLS categorization of similar goods. The second is to define groups broadly enough to ensure consistency across the various waves of the survey. The third is to define groups narrowly enough that they span a wide range of expenditure elasticities. We adhere to the groupings created by the BLS in published statistics with minor exceptions. For instance, we group telephone equipment and services with appliances, computers, and related services rather than with utilities, based on priors regarding expenditure elasticities.

For durable goods differences in expenditure across income groups do not necessarily align with differences in durable stocks and associated service flows. For this reason we also present results restricting attention to nondurable expenditures. Specifically, for each expenditure category we construct two measures of expenditure, one which includes durables and one which does not. In defining the durable component of each category we follow the approach taken in the national income accounts, which we describe in greater detail in the online data Appendix.

For expenditure on housing services, we use rent paid for renters and self-reported rental equivalence for home owners. For surveys conducted in 1980 and 1981 households were not asked about rental equivalence. We impute the rental equivalence for homeowners in these early waves as discussed in the online Appendix. For durables other than housing we use direct expenditure, and do not impute service flows. We show in Section II that our estimates are not sensitive to excluding durables. Reported expenditures on food at home are notably lower for the 1982 to 1987 CE waves. This disparity appears to reflect different wording in the questionnaire for those years. We adjust food at home expenditures upward by 11 percent for these years, with the basis for this correction detailed in the online Appendix.

On the income side, we use the CE measures of total household labor earnings, total household income before tax, and total household income after tax. These variables are reported in the last interview and cover the previous 12 months. Before-tax income in the CE includes labor earnings, non-farm or farm business income, social security and retirement benefits, social security insurance, unemployment benefits, workers' compensation, welfare (including food stamps), financial income, rental income, alimony and child support, and scholarships. Our measure of before-tax income is that reported in the CE, but we add in food as pay and other money receipts (e.g., gambling winnings). For consistency, as we count receipts of alimony and child support as income, we subtract off payments of alimony and child support. Finally, as rental equivalence is a consumption expenditure for home owners, we include rental equivalence minus out-of-pocket housing costs as part of before-tax income as well. Our measure of after-tax income deducts personal taxes from our measure of before-tax income. These taxes are federal income taxes, state and local taxes, and payroll taxes. Note that federal income taxes can be negative, especially as they capture earned income credits. We consider an alternative measure of after-tax income by replacing self-reported federal income taxes with taxes calculated from the NBER's TAXSIM program. We discuss those results as a robustness check in Section IB.

The CE asks respondents a number of questions on active savings. For example, they record net flows to savings accounts, purchases of assets (including houses and business), payments of mortgages, payments of loans, purchases and sales of vehicles, etc. The detailed components of savings are reported in the online data Appendix. We use the savings data as a consistency check, via the budget constraint, on reported consumption. We show below that the average saving rate reported in the CE appears broadly consistent with that obtained from the flow of funds or national income accounts, although there are marked differences. In particular, the data on new mortgages in the CE raise the question of whether the CE accurately records the net effect of refinancing on savings. The CE data show sharp upticks in new mortgages around 1993 and the early 2000s, consistent with published statistics on refinancing. However, a number of reported new mortgages have no corresponding house purchase or significant pay down of an existing mortgage. The CE data imply an average "cash out" percentage of 73 percent from new mortgages not associated with a house purchase, while studies of refinancing suggest that only roughly 13 percent is taken out as cash, with the balance used to pay off existing mortgages and related costs (see Greenspan and Kennedy 2007). For this reason, we construct an alternative measure of household savings that caps the amount of net borrowing (cash out) associated with new mortgages at one-third the size of that mortgage. This reduces the average implied cash out ratio of refinanced mortgages to 14 percent, close to the number reported by Greenspan and Kennedy (2007).

Income, saving, and household total expenditures are expressed in constant 1983 dollars using the CPI-U. Note that we use the aggregate CPI to deflate total expenditures, and do not deflate separately by expenditure category. This keeps all elements of the budget constraint in the same units. All results based on individual expenditure categories are expressed for one set of households relative to others (e.g., high versus low income) at a point in time, so price deflation is not an issue.

CE survey waves from 1981 through 1983 include only urban households, and so for consistency we restrict our analysis to urban residents. Our analysis employs the following further restrictions on the CE urban samples. We restrict households to those with reference persons between the ages of 25 and 64. We only use households who participate in all four interviews, as our income measure and most savings questions are only asked in the final interview. We restrict the sample to those which the CE labels as “complete income reporters,” which corresponds to households with at least one non-zero response to any of the income and benefits questions. We eliminate households that report extremely large expenditure shares on our smaller categories. Finally, to eliminate outliers and mitigate any time-varying impact of top-coding, we exclude households in the top and bottom 5 percent of the before-tax income distribution. (The extent of top coding dictates the 5 percent trimming.) We are left with 62,734 households for 1980–2010. The online data Appendix details how many households are eliminated at each step.

When documenting differences across income levels, we divide households into 5 bins based on before-tax income, with the respective bins containing the 5–20, 20–40, 40–60, 60–80, and 80–95 percentile groups, respectively. For each income group in each year, we average expenditure, income, and savings variables across the member households. Our primary measure of inequality is the ratio of the mean of the top income group to the mean of the bottom income group.

B. Trends in Income and Consumption Inequality

In this subsection, we review the trends in income and consumption inequality using our CE sample. We then discuss the CE savings rates and check the consistency of expenditure, saving, and income inequality from the perspective of the budget constraint.

We begin with labor earnings. The top line in Figure 1 depicts the trend in labor earnings inequality. As discussed in Section IA, inequality is the ratio of the mean for the top income bin to the mean for the bottom income bin. Keep in mind that the allocation of respondents into the high and low-income groups is based on before-tax income, and so the groups are the same for all lines in Figure 1.

There is substantial year-to-year movement, reflecting in large part sampling error; so we report results averaging over multiple years in Table 1. In particular, we look at four three-year periods: 1980–1982, 1991–1993, 2005–2007, and 2008–2010. The fifth column reports the change over the sample period before the Great Recession by log differencing the first and third columns. The final column reports the log change between 2005–2007 and 2008–2010. We break out the recent recession given that inequality behaves somewhat differently during this period, a finding that has already attracted some academic interest.⁵ We also break the sample at 1993 to highlight the sharp rise in inequality during the first decade or so of our sample. While that break captures the sharp early rise in inequality, it leaves aside

⁵ Heathcote, Perri, and Violante (2010) examine the CE data through 2008, Petev, Pistaferri, and Saporta-Eksten (2011) through 2009. Each finds a considerable fall in inequality with the recession, where inequality is measured by relative expenditures at the ninetieth versus tenth percentile of consumption expenditures. Each find the fall in inequality coincides with a large drop in expenditure at the ninetieth percentile.

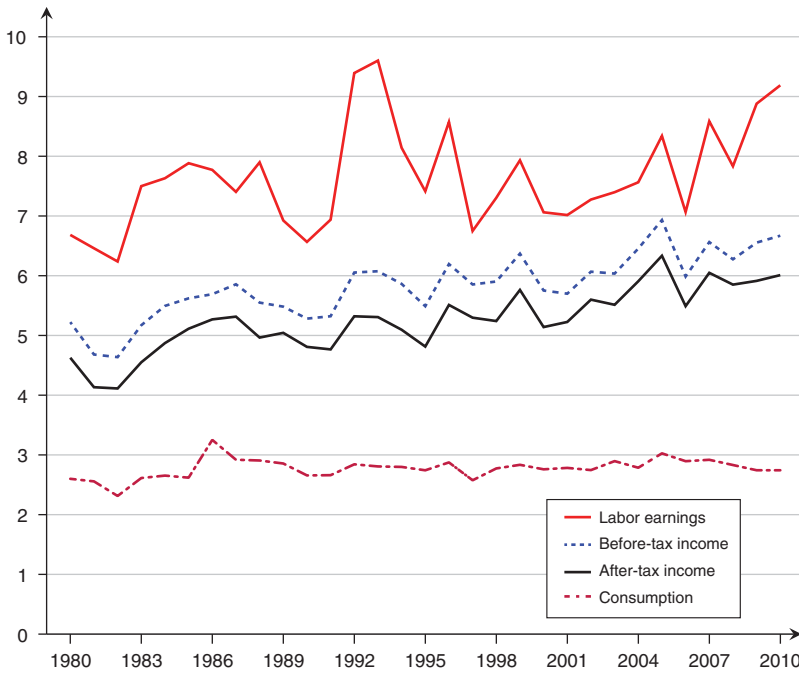


FIGURE 1. TRENDS IN INEQUALITY

Notes: This figure depicts the ratio of high-income to low-income respondents' reported labor earnings, before-tax income, after-tax income, and consumption expenditures. High income refers to respondents who report before-tax household income in the eightieth through ninety-fifth percentiles. Low income refers to respondents in the fifth through twentieth percentiles. Definitions of each series and sample construction are given in the data section.

TABLE 1—TRENDS IN INEQUALITY: RATIO OF HIGH-INCOME TO LOW-INCOME RESPONDENTS

	1980–1982	1991–1993	2005–2007	2008–2010	log change 1980–1982/ 2005–2007	log change 2005–2007/ 2008–2010
Labor earnings	6.41	8.47	7.88	8.59	0.21	0.09
Before-tax income	4.75	5.80	6.40	6.50	0.30	0.02
After-tax income	4.21	5.12	5.87	5.92	0.33	0.01
Consumption expenditures	2.47	2.77	2.93	2.77	0.17	−0.06
Non-durable expenditures	2.31	2.58	2.76	2.62	0.18	−0.05

Notes: High income refers to respondents who report before-tax household income in the eightieth through ninety-fifth percentiles. Low income refers to respondents in the fifth through twentieth percentiles. The elements of the first three columns are the ratio of the average of high-income respondents to the average for low-income respondents, where the averages are taken over the pooled years indicated at the head of the respective column. The last two columns are the log difference of the first and third columns and the third and fourth columns, respectively. All variables are converted into constant dollars before averaging. Definitions of each series and sample construction are given in the data section.

the middle period 1994–1996 employed for the Engel curves in the two-step estimation discussed in the next section.

For the 1980–1982 period, average household labor earnings in 1983 dollars were \$44,995 for our top income group and \$7,002 for our bottom income group, for a

ratio of 6.41. Labor earnings for the top income group grew by 30 percent (in log points) through 2007, while labor earnings for the low income grew by 10 percent, resulting in a ratio of 7.88 in 2005–2007. This implies an increase in earnings inequality of 21 log points. The increase in inequality in the first decade of our sample (from 1980–1982 to the 1991–1993 period) is even larger at 28 percent. But this is largely driven by years 1992–1993 which, from Figure 1 appear as outliers for earnings. For 2007–2010, earnings inequality expanded by 9 log points.

The next line in Figure 1 is for before-tax income which, recall, includes transfers. Inequality in this broader measure of income is lower at each point in time, but also shows a steady increase over time. In particular, this ratio increases from 4.75 in 1980–1982 to 6.40 in 2005–2007 (third row of Table 1), for an increase of 30 percent over this period. Inequality in total household income, after deducting taxes, grew by slightly more than in before-tax income, with an increase of 33 percent over the 1980–2007 sample period (row 3 of Table 1). Income inequality was roughly flat during the Great Recession, with increases of only 2 and 1 log points, respectively, in before- and after-tax income between 2005–2007 and 2008–2010.

As a robustness check on the CE measure of after-tax income, we computed federal income taxes using the NBER's TAXSIM program, and used this in place of the CE's self-reported income tax to calculate after-tax income for the 1980–2010 period. This alternative measure of after-tax income inequality increased from a ratio of 3.79 for 1980–1982 to a ratio of 5.01 for both 2005–2007 as well as 2008–2010. That equals a log change of 28 points. This exercise suggests that respondents in the CE are underreporting the progressivity of federal income taxes relative to TAXSIM, and this gap is increasing modestly over time. Nevertheless, the differences do not substantially change the conclusion that income inequality increased significantly over this period, on the order of 30 percent.⁶

Figure 1 also depicts consumption inequality between the top income group and the bottom income group based on reported expenditures. The increase is much less than that of earnings or income before the recent recession, the feature highlighted in Krueger and Perri (2006). In Table 1, we see that consumption inequality increased by only 17 percent over the pre-Great Recession period. Consumption inequality fell during the Great Recession, with a decline of 6 log points between the 2005–2007 and 2008–2010 surveys. So for the full sample inequality in reported expenditures increased by only 11 percent, or about a third of that seen in income. The final row of Table 1 reports inequality for nondurable expenditures. The evolution of nondurable-expenditure inequality closely tracks that of the benchmark total expenditure measure.

We have also computed inequality relative to the middle-income group, which represents the fortieth to sixtieth percentiles. For simplicity, we will refer to this as the fiftieth percentile. The 32 percent increase in before-tax income inequality reported in Table 1 can be broken into an increase of 21 percent for the 90–50 ratio,

⁶The rise in income inequality we observe in the CE is broadly consistent with patterns in other data. Meyer and Sullivan (2009) measure income inequality using income information in the Current Population Surveys (CPS). There are differences in methodology from our approach; for instance, their statistics adjust for family size using equivalence scales. Nevertheless, they show for 1980–2007 an increase in the 90–10 differential in after-tax income of 27 percent. Heathcote, Perri, and Violante (2010) also examine after-tax income based on CPS data, but report a larger increase in the 90–10 differential for 1980–2005 of a little over 50 percent.

and 11 percent for the 50–10 ratio. Similarly, the 34 percent increase in after-tax income inequality is composed of a 21 percent increase for the 90–50 ratio and 13 percent increase for the 50–10 ratio. For consumption, the 11 percent increase is skewed entirely to the top, with a 13 percent increase in the 90–50 ratio and a 1 percent decrease in the 50–10 ratio. That is, there is actually no reported increase in consumption inequality in the bottom half of the sample.

C. Saving Rates

We now turn to implied and observed saving rates, beginning with mean saving rates. Figure 2 depicts the personal saving rate reported in the flow of funds accounts.⁷ There is a clear downward trend in this series, starting from 12.2 percent for 1980–1982 and falling to 1.7 percent for 2005–2007, and then recovering slightly during the recent recession. This downward trend in the personal saving rate is well known, and is similar to that implied by the national income accounts.

The implied savings rate in the CE data can be computed as one minus the ratio of mean consumption expenditures to mean after-tax income. This series is also depicted in Figure 2. The implied saving rate has a dramatically different trend, increasing from 13 percent for 1980–1982 to 23 percent for 2005–2007, and then continuing upward to 25 percent for 2008–2010. This systematic increase in implied savings is at odds with the flow of funds or national income accounts, and is the counterpart to the previously discussed increasing gap between CE and NIPA expenditure.

Figure 2 also reports the saving rate constructed from the CE's savings data. The series labeled “unadjusted” is the sample mean of reported savings divided by mean after-tax income for each year. The mean savings rate falls from 3 percent in 1980 to –12 percent at the end of the sample. This decline is the opposite of the increase implied by consumption data, revealing an inconsistency between the CE's consumption, income, and savings data that is increasing over time. As mentioned in Section IA, there is a measurement issue concerning new mortgages, which underlies the large decline generally, and the sharp swings around 1993 and 2003 in particular. As described in Section IA, we construct an alternative savings series designed to address the mis-reporting of new mortgages. This series is the “adjusted” series in Figure 2. With adjustment, the series more closely tracks the flow of funds savings and eliminates part of the sharp downward spikes in savings in the mid-1990s and 2000s.

The fact that aggregate consumption in the CE is falling relative to NIPA does not necessarily bias measures of inequality. For example, if CE expenditures are underreported by the same multiplicative factor for all income groups, then the ratio of consumption across groups will not be biased. However, such an assumption has somewhat extreme implications for relative saving rates. Suppose we uniformly increase expenditures across groups in 2008–2010 to generate a decline of 6 percentage points in the aggregate CE savings rate, which is the decline observed in the

⁷Specifically, the saving rate is personal saving without consumer durables divided by disposable income. A similar pattern is obtained using the national income and product accounts, where savings is disposable personal income minus personal outlays.

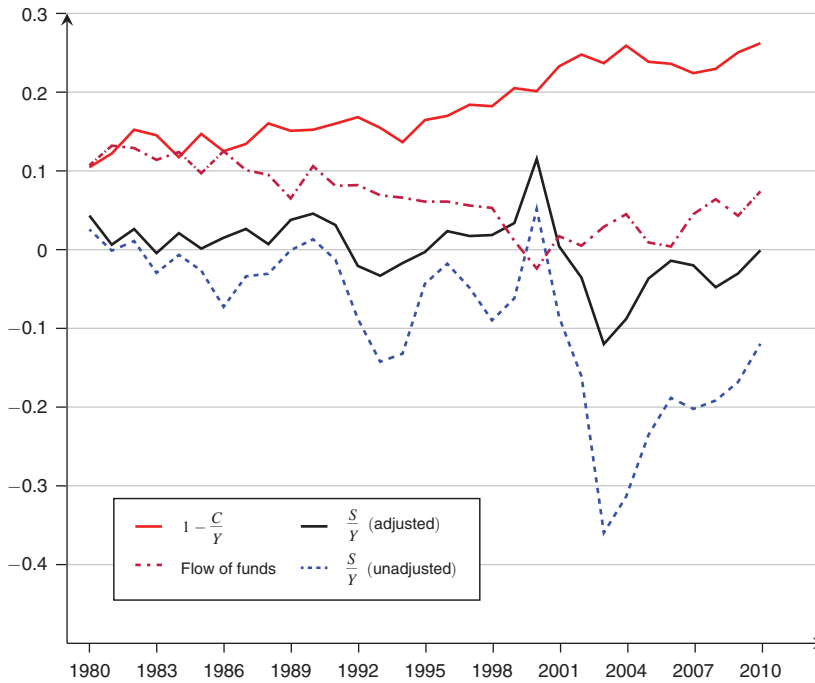


FIGURE 2. AGGREGATE SAVING RATES

Notes: This figure depicts the aggregate savings rates. The line labeled $1 - C/Y$ refers to implied savings computed as after-tax income minus reported consumption expenditures. The line labeled “Flow of funds” is the flow of funds aggregate private savings rate out of disposable income. The lines labeled S/Y refer to CE average reported savings divided by average reported after-tax income. Adjusted and unadjusted refer to whether we adjust reported new mortgages, as described in the data section of the text. Definitions of each series and sample construction are given in the data section of the text.

flow of funds. This implies that consumption should be adjusted upwards by 24 percent.⁸ Given that $\frac{\text{Savings}}{\text{Income}} = 1 - \frac{\text{Consumption}}{\text{Income}}$, this implies each income group’s saving rate must be adjusted downward by 24 percent of their respective consumption to income ratio. Because the consumption-income ratio is much higher for low-income groups, it requires an extreme decline in their savings rate. In particular, the implied savings rate for the top income group must decline modestly from 28 percent for 1980–1982 to 26 percent for 2008–2010, while for the bottom group it must go from -23 all the way down to -59 percent. We suggest that such a trend decline in savings rate for the bottom group is extreme, especially given that income is defined to include transfers and given that the very lowest income households are trimmed from the sample.

⁸Specifically, let γ denote our adjustment factor, so we increase consumption by a factor of $(1 + \gamma)$ uniformly across households. The adjustment to the saving rate is: $\Delta \frac{S}{Y} = -\gamma \frac{C}{Y}$. To match the 6 point decline in the saving rate observed in the flow of funds, the aggregate CE saving must be adjusted down by $0.12 - (-0.06) = 0.18$ points in 2008–2010. As the ratio of aggregate CE consumption to income in 2008–2010 is 0.75, an adjustment factor of $\gamma = 0.24$ is required: $(-0.24)(0.75) = -0.18$.

These implied saving trends across income groups are also inconsistent with the CE's (admittedly noisy) micro data on active savings.⁹ In particular, high-income respondents report an adjusted savings rate of 2 percent in 1980–1982 and a rate of 1 percent in 2008–2010. Low-income respondents report corresponding saving rates of 3 percent and 0 percent, respectively.

As previously emphasized, reported savings is not a focus of the CE, and one may reasonably question conclusions drawn solely from reported savings. Our primary focus is to use the savings data as a consistency check on the CE's consumption data. It turns out that the savings data tell a much different story regarding consumption inequality than do the expenditure data. This inconsistency raises the question of whether the expenditure data are subject to systematic measurement error that biases our estimates of consumption inequality. Addressing this potential measurement error is the focus of the next section.

II. Demand System Estimates of Consumption Inequality

In this section we present our main results. We first discuss how our econometric methodology corrects for several classes of mis-measurement. We then estimate a simple demand system which we use to generate our estimates of consumption inequality growth.

A. Econometric Approach

To set notation, let $h = 1, \dots, H$ index households, the unit of observation in the CE; $i = 1, \dots, I$ denote the $I = 5$ income groups; $j = 1, \dots, J$ index our $J = 20$ goods; and let t index time (year). x_{hjt} denotes reported expenditure on good j at time t by household h . X_{ht} denotes total expenditure at time t by household h ; that is, $X_{ht} = \sum_{j=1}^J x_{hjt}$.

We assume that x_{hjt} is measured with error, with the degree of mis-measurement depending on time, income group, and good. In particular, let x_{hjt}^* denote the true expenditure, and

$$(1) \quad x_{hjt} = x_{hjt}^* e^{\zeta_{hjt}}.$$

We can decompose ζ_{hjt} into three components,

$$(2) \quad \zeta_{hjt} = \psi_t^j + \phi_t^i + v_{hjt}.$$

Here, ψ_t^j reflects mis-measurement of consumption good j at time t that is common across respondents (e.g., food may be underreported for all households); ϕ_t^i represents mis-measurement specific to i at time t that is common across goods (e.g., the rich may underreport all expenditures); and v_{hjt} is the residual good-household specific measurement error (e.g., food expenditures of household h are underreported). Without loss of generality (given the presence of ψ_t^j and ϕ_t^i), we normalize

⁹It is also not reflected in other micro-data on savings, as documented by Bosworth and Anders (2008) and Bosworth and Smart (2009).

the mean of v_{hjt} across households to be zero for all t . Our identifying assumption is that v_{hjt} is classical measurement error; in particular, it is independent of the characteristics of good j and household h at each date t . We will be more precise about the independence condition after we discuss our estimation strategy.

Our estimation consists of two steps. First, we estimate the total expenditure elasticities for each good. We estimate a log-linear approximation to the Engel curves. Of course, Engel curves cannot be log-linear globally unless all elasticities are one. More generally, it is well known that log-linear demand systems are not globally theory consistent.¹⁰ Nevertheless, it provides a tractable framework to address the mis-measurement of expenditure in the CE. A reasonable benchmark is that respondent's errors (positive or negative) are scaled by their level of expenditures. As we show below, the log-linear specification is particularly well suited to handle such measurement error. We estimate a second-order expansion as a robustness check in Section III. A popular alternative local approximation is the Almost Ideal Demand System (AIDS) of Deaton and Muellbauer (1980a), which assumes that the share of expenditure on good j is log linear in total expenditure. The AIDS approximation has nice features for tractably testing implications of consumer optimization, but is not well suited to handle good-specific measurement error v_{jt}^j in our second stage. Multiplicative measurement error is not differenced out in the AIDS specification.

We assume that the first-order expansion in true expenditure satisfies

$$(3) \quad \ln x_{hjt}^* - \ln \bar{x}_{jt}^* = \alpha_{jt}^* + \beta_j \ln X_{ht}^* + \Gamma_j \mathbf{Z}_h + \varphi_{hjt},$$

where \bar{x}_{jt}^* is the average expenditure on good j in year t across all households. The term \mathbf{Z}_h is a vector of demographic dummies based on age range (25–37, 38–50, 51–64), number of earners (< 2, 2+), and household size (≤ 2 , 3–4, 5+). We allow the coefficient vector on demographics Γ_j to vary across goods.¹¹ The variable α_{jt}^* reflects the expansion point of average total expenditure. Note that first-order good-time specific demand shifters, such as the effect of relative prices, are captured by mean expenditure on each good, a point we discuss in the next paragraph. The error term φ_{hjt} represents idiosyncratic relative taste shocks as well as the second-order error from the log-linear approximation, which we assume are independent of total expenditure and independent of expenditure elasticities β_j . Note as well that β_j do not have a time subscript, reflecting the assumption that the expenditure elasticity for each good is stable over time. We explore the stability of β_j and robustness to other potential mis-specification issues in Section III.

An important concern is whether shifts in spending over time are driven by changes in relative prices. Note that relative prices do not appear explicitly in (3). This reflects that the first-order price effects are embedded in the good-time intercept

¹⁰In particular, the “adding up” constraint is not globally satisfied. That is, a log change in total expenditure will predict proportional changes in individual goods that do not necessarily add up to the assumed change in the total. Deaton and Muellbauer (1980b, ch. 1.2) discusses this issue in detail. For our purposes this raises the question of the quality of the linear approximation out-of-sample, an issue discussed at length below.

¹¹We have explored an extension in which demographic taste-shifters are allowed to vary by income as well as good. Specifically, we interact the demographic dummies \mathbf{Z}_h with household log after-tax income. The results are nearly the same. In particular, in our benchmark WLS specification, we estimate inequality has increased by 0.35 between 1980/1982 and 2005/2007 (Table 3, column 2). The comparable estimate with demographic \times income interaction is 0.32. The estimate for the change during the Great Recession is -0.04 in both specifications.

α_{jt}^* . More precisely, the first-order effect of changes in prices (the cumulation of own price effects and the effects due to cross-price elasticities) on demand for good j at time t are good-time specific effects, and thus captured by the good-time intercept α_{jt}^* . Our specification therefore accommodates changes in demand over time that are driven by shifts in relative prices. A distinct but related question is whether the expenditure elasticity β_j depends on relative prices. Such an interaction is not addressed by the good-time specific intercept. However, to the extent that movements in relative prices over time lead to movements in expenditure elasticities, this issue falls under the question of the stability of expenditure elasticities over time. We discuss this possibility in detail in Section III. That section also discusses complications due to relative price effects that may arise in a quadratic specification, as noted by Banks, Blundell, and Lewbel (1997).

In terms of observables, equation (3) can be rewritten

$$(4) \quad \ln x_{hjt} - \ln \bar{x}_{hjt} = \alpha_{jt} + \beta_j \ln X_{ht} + \Gamma_j \mathbf{Z}_h + u_{hjt},$$

where the residual term includes income-specific systematic measurement error ϕ_t^i as well as idiosyncratic taste shocks φ_{hjt} and mis-measurement v_{hjt} ,

$$(5) \quad u_{hjt} = \phi_t^i + v_{hjt} + \varphi_{hjt}.$$

Note that the good-time specific measurement error ψ_t^j is differenced out by including mean observed expenditure on the left-hand side, leaving $\alpha_{jt} = \alpha_{jt}^* + \beta_j(\ln X_{ht}^* - \ln X_{ht})$.

We estimate expenditure elasticities β_j using the 1994–1996 Consumer Expenditure Survey. These three waves represent the mid-point of our sample. In previous work, we have used the 1972–1973 CE survey as the basis for estimating expenditure elasticities. It turns out our second-stage estimates are relatively stable with respect to the first-stage time period, a point we discuss in detail in the robustness section.

There are a number of issues that arise in estimating (4). There are cases in which household expenditure on a particular good may be zero, making the log specification inappropriate. In our estimation, we replace $\ln x_{hjt} - \ln \bar{x}_{jt}$ with the percentage deviation from average expenditure on that good in that year: $\tilde{x}_{hjt} \equiv \frac{x_{hjt} - \bar{x}_{jt}}{\bar{x}_{jt}}$. These are equivalent representations in a first-order expansion around average expenditure, but raise the concern that households with large deviations may influence the estimation in one or the other specification.¹² We have verified that the analysis does not depend on whether we use log total expenditure as the independent variable or the percent deviation from that year’s average; we report results using log total expenditure for ease of discussion. We defer discussion of higher order terms for total expenditure until Section III.

A second concern with estimating a demand system like (4) is that mis-measurement of individual goods is cumulated into total expenditure, inducing correlation between the measurement error captured in the residual and observed total expenditure. A

¹²In a previous version, we averaged expenditure within income-demographic cells and then explored log expenditure on each good across cells. The results are comparable and reported in Aguiar and Bils (2011).

standard technique is to instrument total expenditure with income and other proxies for total expenditure. We report results using two alternative approaches to instrumenting. The first exploits the fact that total expenditure reflects permanent income and will thus be correlated with current income. Specifically, we instrument total expenditure with dummies for the household's income group as well as the continuous variable log after-tax income. The second approach exploits the fact that households in the CE report total expenditure in separate interviews for each of four quarters. This allows us to divide each household's spending into that over its first two quarters versus its final two. We then estimate the Engel elasticities from (4) based on the expenditures from the final two quarters, instrumenting for household total expenditure with its total expenditure over the first two quarters. This second approach exploits that total expenditure is a natural proxy for permanent income. As we shall see in the next subsections, the two approaches yield nearly identical results.

These IV specifications are designed to address classical measurement that is uncorrelated with income or lagged consumption. As modeled above, there may be systematic measurement error that is common across households within an income group or common to a household over time. That is, the fact that the 1994–1996 CE may contain systematic measurement will lead to biased estimates of the expenditure elasticities. In particular, if consumption inequality is understated in 1994–1996, the expenditure elasticities will be biased away from one. When we invert the demand system, as described below, this will lead to understatement of consumption inequality in other years as well. A bias in the opposite direction will be in effect if inequality is overstated in the 1994–1996 surveys. For this reason, our ultimate estimates of inequality must be interpreted as conditional on the level of inequality observed in the first-stage surveys. In the robustness section, we discuss how the results vary when we use alternative years for the first stage.

The second stage of our estimation is to invert the demand system (3) to recover an estimate of how consumption inequality evolved over the years of the survey. We first adjust expenditure for demographics. Specifically, let

$$\hat{x}_{ijt} \equiv \tilde{x}_{hjt} - \hat{\Gamma}_j \mathbf{Z}_h,$$

where $\hat{\Gamma}_j$ is the estimate of Γ_j from (4). Using (3), we have

$$\begin{aligned} (6) \quad \hat{x}_{hjt} &= \alpha_{jt} + \phi_t^i + \beta_j \ln X_{ht}^* + \varphi_{hjt} + v_{hjt} \\ &= \alpha_{jt} + \phi_t^i + \beta_j \ln X_{it}^* + \beta_j (\ln X_{ht}^* - \ln X_{it}^*) + \varphi_{hjt} + v_{hjt} \\ &= \alpha_{jt} + \phi_t^i + \beta_j \ln X_{it}^* + \varepsilon_{hjt}, \end{aligned}$$

where the middle line has substituted in the average log expenditure for income group i , which is the focus of our analysis. The residual term is $\varepsilon_{hjt} = \beta_j (\ln X_{ht}^* - \ln X_{it}^*) + \varphi_{hjt} + v_{hjt}$.¹³

¹³The residual term will also contain estimation error related to $\hat{\Gamma}_j$, which we suppress in the notation.

To implement (6), we regress \hat{x}_{hjt} on a vector of good-time dummies (whose coefficients correspond to α_{jt}), a vector of income-time dummies $D_{i,t}$ (whose coefficients correspond to ϕ_t^i), and the interaction of income-time dummies and the first-stage estimates $\hat{\beta}_j$. The coefficient on this last interaction term will be the respective estimates of $\ln X_{it}^*$ for each income group. To address the issue of normalization, we estimate expenditure relative to the lowest income group ($i = 1$). That is, we have a consistent estimate of consumption inequality: $\delta_{it} = \ln X_{it}^* - \ln X_{1t}^*$. To estimate trends over time, we restrict ϕ_t^i and δ_{it} to be constant within each three-year window 1980–1982, 1991–1993, 2005–2007, and 2008–2010, but allow the good-time intercept terms α_{jt} to vary year by year. Our two-step procedure requires adjusting the second stage standard errors, which we do by bootstrapping.¹⁴

Our key identifying assumption is that idiosyncratic measurement errors and preference shocks are not systematically related to the expenditure elasticities across goods. More exactly, we require that v_{hjt} , the idiosyncratic component of the mis-measurement of good j for household h in income group i at time t , and the corresponding idiosyncratic taste shock φ_{hjt} , both be orthogonal to the expenditure elasticity β_j conditional on income group. This implies that ε_{hjt} is independent of $\beta_j \times D_{i,t}$. Therefore, we can obtain a consistent estimate of $\ln X_{it}^*$, up to a normalization, by least squares. We only have identification up to a normalization given the presence of α_{jt} .¹⁵ Note that changes in systematic measurement error over time are captured by good-time and income group-time dummies. Identification comes from the fact that if the total expenditure of group i increases relative to that of group i' , that increase will fall disproportionately on luxuries.

Before proceeding, it is useful to discuss the strengths and limitations of our identification procedure. The second stage uses our first-stage estimates $\hat{\beta}_j$ as generated regressors. We require that these estimates (interacted with income-group dummies D_{it}) be orthogonal to ε_{hjt} in the second stage. Note that we never use the same time period for the first and second stages to avoid correlated sampling error arising from our generated regressors. Aside from the generated regressors, we still have the question of whether the residual is correlated with the true β_j . The presence of $\beta_j(\ln X_{it}^* - \ln X_{it}^*)$ in ε_{hjt} is not an issue, as this will be orthogonal to our regressor by definition.¹⁶ The important identification issues arise due to the presence of the good-time-household mis-measurement, v_{hjt} , and whether this mis-measurement is orthogonal to $\beta_j \times D_{it}$.

We now discuss some plausible scenarios and evaluate whether they violate our identification assumption. One scenario is that shifts in expenditure on good j are the result of relative price movements. As discussed previously, such changes are accommodated by the good-time specific intercept α_{jt} .¹⁷ Specifically, this intercept captures the first-order price elasticities that are common across households at a point in time. A particular concern would be if relative price changes induced

¹⁴Specifically, we draw with replacement from the micro data for all years and re-estimate both stages.

¹⁵That is, the mean of $\ln X_{it}^*$ is not identified as $\alpha_{jt} + \beta_j \ln X_{it}^* = \alpha_{jt} - \beta_j \delta + \beta_j(\ln X_{it}^* + \delta)$.

¹⁶That is, $E[\beta_j D_{it} \times \beta_j(\ln X_{it}^* - \ln X_{it}^*) | \beta_j, D_{it}] = \beta_j^2 D_{it}(E[\ln X_{it}^* - \ln X_{it}^* | D_{it}]) = 0$, where the last equality follows from the definition of $\ln X_{it}^*$ as average log expenditure within income group i .

¹⁷More precisely, this rests on the assumption that all households at a point in time face a common set of prices. We maintain this standard assumption, but acknowledge the caveat that prices may vary across households due to the ability to search. See Aguiar and Hurst (2007) for an empirical exploration of this phenomenon.

shifts in spending between luxuries and necessities that differed across high- and low-income households. For example, suppose that the relative prices of luxuries increased and high-income households exhibited an inelastic price response while low-income consumers exhibited an elastic response. The relative price changes would then cause a shift in spending on luxuries for richer households, relative to poorer, beyond that created by their relative changes in total expenditures. Our specification does not control for this heterogeneity in price elasticities, and our good-time intercept will only pick up the average price effect. Nevertheless, we can say something about the likelihood of this scenario. The starting point for this possible concern is that relative price movements in our sample period are correlated with expenditure elasticities, our second-stage regressors. We do not see this in the data. Specifically, we have constructed price indices for our 20 goods and find that the correlation between the change in price between 1980 and 2010 with the good's respective estimated price elasticity is small and not significantly different from zero. In particular, weighting categories by their average spending in NIPA, the correlation is -0.13 with a p -value of 0.58 .

As an additional check on whether price changes affect households differentially, we have extended our baseline specification to include fixed effects for good-time-demographic interactions. This accommodates expenditure shifts due to relative price changes that impact households differently depending on the household's size, number of earners, and age. We find minimal change in our implied inequality measures.¹⁸

One potential source of measurement error is that household j experienced a rapid change in expenditure on good j , but reports some smoothed average of expenditure over a longer time frame than the current or previous quarter. If this change is idiosyncratic to household h , this does not violate our orthogonality condition. More to the point, suppose household h had an increase in permanent income and increased expenditure on all goods, with the increase governed by the expenditure elasticity β_j . If the household reports a smoothed expenditure number, it will underreport expenditure on all goods, but more so for luxuries. Nevertheless, as long as the change in permanent income is idiosyncratic, it will average out within an income group, and therefore not violate orthogonality with $\beta_j \times D_{it}$.

However, suppose that all households in income group i experienced permanent income growth, and mis-reported expenditure on good j by averaging over several periods. For example, suppose high-income household experience rapid income growth relative to poor households, which in turn induces rapid growth in expenditure. This growth will be biased toward luxuries by definition. If households smooth their responses over time, the high-income households will underreport expenditure on all goods, but more so for luxuries. This will lead to a violation of our identification. More precisely, the underreporting that is biased toward luxuries of the rich will lead us to underestimate inequality at a point in time. This is an intuitive source of bias. If households are averaging their reported expenditure on all goods over a longer time frame, we will estimate a level of consumption inequality that holds on average over the time frame. If inequality is increasing and households are reporting

¹⁸In particular, our benchmark change in inequality between 1980/1982 and 2005/2007 is 0.35 log points (Table 3, column 2). With good-time-demographic fixed effects the implied change in inequality is 0.34.

TABLE 2—ENGEL CURVES FROM 1994–1996 EXPENDITURE SURVEY

Good category	CE share 1994–1996	(I)		(II)	
		Elasticity	SE	Elasticity	SE
Housing	27.3	0.92	(0.02)	0.93	(0.02)
Food at home	11.7	0.37	(0.02)	0.47	(0.02)
Vehicle purchasing, leasing, insurance	13.2	1.02	(0.08)	0.72	(0.1)
All other transportation	7.4	0.89	(0.03)	0.91	(0.04)
Utilities	5.2	0.47	(0.02)	0.55	(0.02)
Health expenditures including insurance	5.0	0.91	(0.06)	1.11	(0.08)
Appliances, phones, computers with associated services	4.9	0.87	(0.04)	0.94	(0.05)
Food away from home	4.6	1.33	(0.06)	1.32	(0.07)
Entertainment equipment and subscription television	4.1	1.26	(0.07)	1.22	(0.08)
Men's and women's clothing	2.6	1.35	(0.05)	1.38	(0.06)
Entertainment fees, admissions, reading	2.2	1.74	(0.06)	1.65	(0.07)
Cash contributions (not for alimony/support)	2.2	1.81	(0.18)	1.26	(0.12)
Furniture and fixtures	1.5	1.39	(0.1)	1.55	(0.15)
Education	1.3	1.63	(0.18)	1.88	(0.23)
Shoes and other apparel	1.5	1.09	(0.09)	1.19	(0.11)
Domestic services and childcare	1.5	1.60	(0.13)	1.80	(0.13)
Tobacco, other smoking	1.0	-0.26	(0.09)	-0.05	(0.08)
Alcoholic beverages	1.0	1.14	(0.09)	1.14	(0.08)
Children's clothing (up to age 15)	1.0	0.67	(0.07)	0.83	(0.09)
Personal care	1.0	0.96	(0.05)	0.96	(0.05)

Notes: The first column presents each good's average share of total expenditure for 1994–1996. The remaining columns report estimates of each good's expenditure elasticity, with associated standard errors in parentheses. Specification (I) sums each household's expenditure (on each good and in total) over all four interviews and instruments log total expenditure with dummy variables indicating the household's income category as well as the continuous variable of log real after-tax income. Specification (II) splits the four interviews into two subsamples. Each household's expenditure is computed using the sum of the final two interviews. Log total expenditure summed over the first two interviews is used as the instrument. The correlation of the two specifications is 0.93. See text for details of sample construction and regression specification. All specifications include demographic control dummies for age, household size, and number of earners.

long-run averages, we will understate true inequality at a point in time (and vice versa if inequality is declining).

These examples provide a sense of when our identification holds and when it fails. It also gives a sense of possible bias; namely, to the extent that mis-measurement leads the high-income households to underreport luxuries relative to necessities (and this mis-measurement is greater for high-income than low-income households), our second stage will underestimate true inequality. If the reverse is true (that is, the rich underreport necessities relative to luxuries or the poor over-report necessities relative to luxuries), we will overstate inequality.

B. Results

Table 2 reports the results of our first-stage estimates of each good's total expenditure elasticity. The table also includes the average share of each good out of total expenditure for our 1994–1996 CE sample. The first column of elasticities uses log income and dummies for income group to instrument for total expenditure, while the second column of elasticities uses the initial two interviews' total expenditure to instrument for the final two quarters' total expenditure. The standard errors are reported next to each estimate and suggest that our first stage has a fair degree of precision, particularly for the goods with large expenditure shares. The correlation

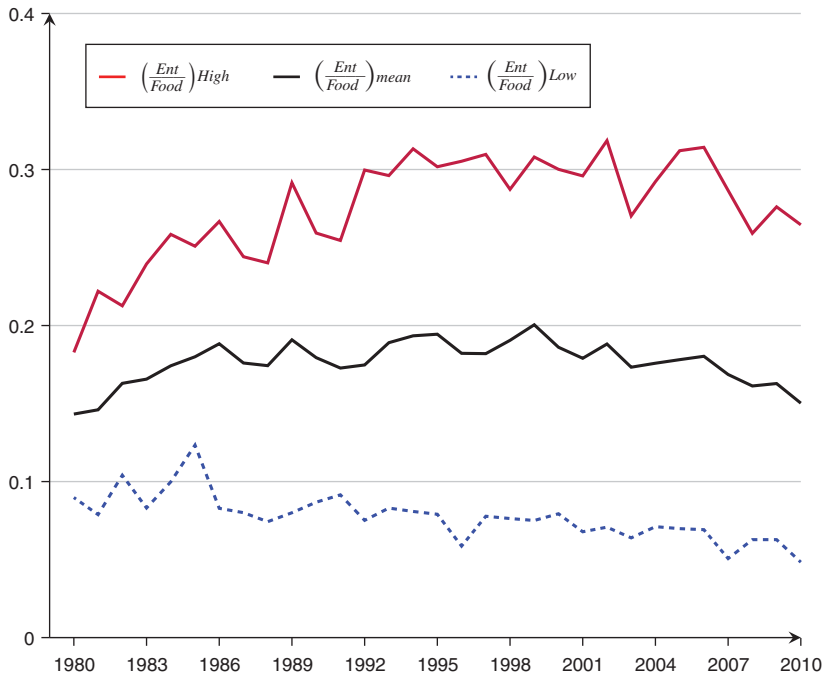


FIGURE 3. THE RATIO OF ENTERTAINMENT TO FOOD EXPENDITURE: HIGH-INCOME AND LOW-INCOME HOUSEHOLDS

Note: This figure depicts the ratio of spending on nondurable entertainment to food at home for high- and low-income households.

coefficient between the two sets of elasticities is 0.93, and each column has a similar amount of dispersion (standard deviation of 0.50 and 0.47, respectively) indicating consistency across specifications.

Both specifications indicate that tobacco has a negative elasticity, while domestic services, education, and entertainment are relative luxuries. Consistent with other studies, food at home has a fairly low expenditure elasticity (0.37 and 0.47), while food away from home has a high elasticity (1.33 and 1.32). Housing services, our largest expenditure category, has an expenditure elasticity of 0.92 and 0.93 in the two respective specifications.

To provide a sense of how these expenditure elasticities are informative about relative consumption inequality, we first consider two goods—food at home and non-durable entertainment. These goods have reasonably large shares and very different expenditure elasticities. We plot the relative expenditure (entertainment over food at home) for the high- and low-income households in Figure 3. High-income households display a shift in expenditure from food to entertainment over the sample period. Specifically, the ratio increases from 0.21 in 1980–1982 to 0.27 for 2008–2010. Conversely, low-income households display a shift away from nondurable entertainment, with their ratio falling from 0.09 to 0.06. For context, the ratio of mean entertainment expenditure to mean food at home expenditure rises slightly, from 0.15 to 0.16, over this period.

The relative shift in expenditure toward a luxury for the high-income households implies a sharp increase in total expenditure inequality. For a sense of how

these shifts are informative by total expenditure inequality, consider the increase in the high-income line in Figure 3. On average, high-income expenditure on entertainment increased 48 percent faster than mean expenditure on entertainment, but increased only 4 percent faster than the mean for food at home. Note that comparison across goods within an income class addresses income-group specific multiplicative measurement error (ϕ_i^j), while comparison to mean expenditure on each good in each year addresses good-specific shifters due to price effects and good-specific mis-measurement ($\alpha_{j,t}$). Given the respective expenditure elasticities of 1.74 and 0.37 (Table 2) and temporarily ignoring demographic shifts, a simple calculation suggests an increase of log expenditure for high-income households relative to the mean of $(48 - 4)/(1.74 - 0.37) = 32$ points. For low-income households, their expenditure on entertainment fell 16 percent relative to the mean, while their expenditure on food at home increased 4 percent relative to the mean. This suggests a decrease in relative total expenditure of 15 points. On net, relative expenditure on these two goods for these two income groups suggests an increase in total expenditure inequality of 47 log points.

This estimate is a noisy measure given the presence of idiosyncratic shocks at the income-good level. A more precise estimate can be obtained using all goods. Figure 4 provides a sense of how the identification scheme works. The figure is a scatter plot of relative consumption growth on each good versus the respective expenditure elasticities. Specifically, consider food at home (the point labeled “foodhome”). The horizontal coordinate is 0.37, the estimated expenditure elasticity for food at home from Table 2. Controlling for demographics, high-income households spent 37 percent more on food at home than low-income households in 1980–1982, and 43 percent more in 2008–2010. This relative shift of 0.06 is depicted on the vertical axis of Figure 4. Similarly, the point labeled “ent” for entertainment refers to an estimated elasticity of 1.74 and a relative growth across time and income groups of 62 percent. A fitted line between only these two points would have slope of 0.42, which is the demographically adjusted counterpart of the 0.47 derived in the previous paragraph. Using all 20 goods, the fitted line that is depicted has a slope of 0.425. This suggests that an increase in relative total expenditure of 42.5 log points is consistent with the relative shifts across luxuries and necessities over this period.

More formally, Table 3 reports our second-stage regression estimates of the log change in consumption inequality from (6). We focus on the change in consumption inequality between the highest income and lowest income groups relative to 1980–1982, and discuss other inter-group comparisons below. The first row of Table 3 reports the estimated inequality in the pooled base period 1980–1982. This is the estimate of $\ln X_5^* - \ln X_1^*$ for the first three years of our sample. The row labeled “log change 1980/1982–1991/1993” is the estimated change in inequality between 1980–1982 and 1991–1993. Similarly, the next row corresponds to the estimated change in consumption inequality between 1980–1982 and 2005–2007. The final row of estimates reports the change in inequality during the Great Recession based on the change between 2005/2007 and 2008/2010.

Column 1 reports the second-stage estimates using ordinary least squares and the first set of elasticity estimates from Table 2. The first row reports the estimated log inequality in the pooled period 1980–1982, which is 0.85. For comparison, Table 1 reports a log ratio for reported expenditures of $\ln(2.47) = 0.90$ for 1980–1982,

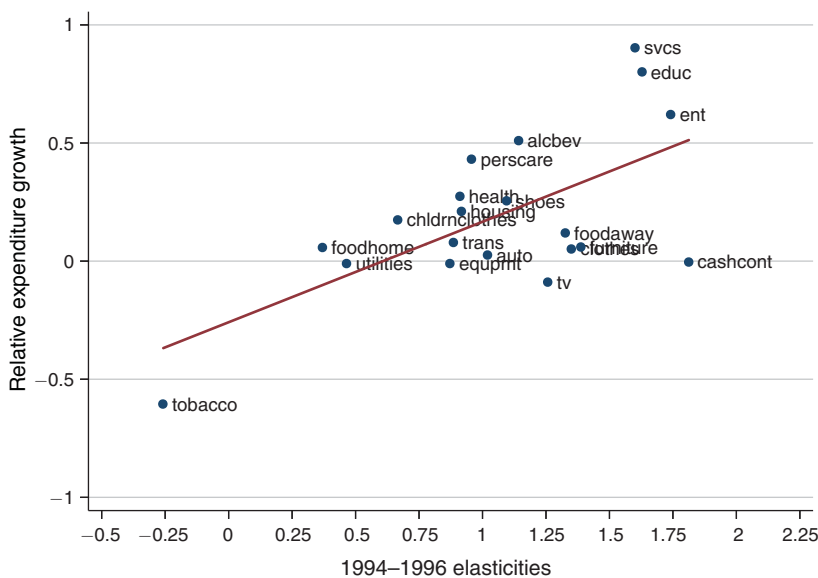


FIGURE 4. RELATIVE EXPENDITURE GROWTH FOR 20 GOODS

Notes: This figure is a scatter plot of relative (high- versus low-income) expenditure growth over the sample period for each good versus expenditure elasticity. The vertical axis depicts the difference across high-income and low-income households in the log growth in expenditure for each good between 1980/1982 and 2008/2010. The horizontal axis is each good’s estimated expenditure elasticity from Table 2, column I. The slope of the scatter plot’s regression line is 0.425.

TABLE 3—TRENDS IN CONSUMPTION INEQUALITY BASED ON RELATIVE EXPENDITURE PATTERNS

	(1)	(2)	(3)	(4)	(5)
log inequality, 1980–1982	0.85 (0.07)	0.90 (0.06)	0.82 (0.08)	0.71 (0.05)	0.91 (0.06)
log change, 1980–1982/1991–1993	0.27 (0.08)	0.17 (0.06)	0.20 (0.07)	0.27 (0.06)	0.15 (0.07)
log change, 1980–1982/2005–2007	0.48 (0.08)	0.35 (0.07)	0.43 (0.08)	0.46 (0.06)	0.30 (0.07)
log change, 2005–2007/2008–2010	−0.06 (0.08)	−0.04 (0.06)	−0.05 (0.08)	−0.05 (0.06)	−0.04 (0.06)
Categories included	All	All	All	Without durables	Without tobacco
Specification	OLS	WLS	WLS	WLS	WLS
First-stage instrument	Income	Income	Lagged expenditure	Income	Income

Notes: This table reports the estimated change in consumption inequality for top versus bottom income quintiles obtained from the second-stage regressions. Column 3 uses the first-stage estimated expenditure elasticities reported in column II of Table 2, while all other specifications use the column I estimates. The estimated parameters in the first row represent log inequality between the high-income and low-income households in 1980–1982. The next three rows represent the relative growth in total expenditure for high-income households relative to low-income households for the period specified. See the specification in the text for full details. The first column implements the second stage by OLS while the remaining columns implement weighted least squares, using the average NIPA shares for 1980–2010 as weights. For column 4, the weights are adjusted by multiplying the NIPA shares by the average share of each category’s expenditure that is nondurable in our CE sample. The standard errors are calculated using a bootstrap with 100 replications.

which differs from our second-stage point estimate for that period by 0.05 points. This implies that the level of consumption inequality estimated with our two-step procedure is similar to that obtained from reported expenditure for the beginning of our sample. This similarity, however, does not persist over time. The next two rows of estimates in column 1 report that the estimated change in consumption inequality is 27 percent for the early period and 48 percent through 2007. These numbers are similar in magnitude (or larger) than those for after-tax income reported in Table 1, and differ from changes in reported consumption inequality. The final row of column 1 reports a decline in consumption inequality of 6 points, which is similar to that reported for reported consumption in Table 1, suggesting that the recent decline in consumption inequality is reflected in the shifting of relative consumption baskets. The estimated increase in consumption inequality for the entire period 1980–2010 is 42.5 log points, which is the slope in Figure 4.

One issue with OLS is that it weights all goods equally in the second stage. This raises the question of whether goods with small shares are excessively driving the results. Column 2 implements weighted least squares, where the weights reflect the share of each good in personal consumption expenditures (PCE) from the national income accounts. Specifically, we calculate the share of each good out of total PCE for each year, then average the shares over the sample period 1980–2010 and use these shares to weight the goods in the second stage regression. For health expenditures we down weight its share for each year to a factor equal to the share of private expenditures, out of pocket and private insurance, out of total national health expenditures; this factor averages 49 percent for 1980–2010.¹⁹ The baseline log inequality is slightly higher (0.90) in this specification, and the corresponding increase over time slightly lower. Specifically, we estimate a change in consumption inequality of 17 percent for the early period, 35 percent through 2007, and a decline over the last 5 years of 4 percent.

The third column of Table 3 uses the alternative elasticities from Table 2, with lagged expenditure rather than income as instrument, to estimate the WLS specification of column 2. The alternative elasticities yield slightly lower initial inequality (0.82 versus column 2's 0.90), and a slightly greater increase in inequality over time. Specifically, an increase of 0.20 in the first decade and 0.43 through 2007, compared to 0.17 and 0.35 in column 2. The fact that the second stage yields similar estimates is not a surprise given the high correlation of the elasticities in Table 2.

Column 4 performs the same WLS regression as column 2 but excludes the subset of each category's expenditure that falls on durables. We adjust the WLS expenditure weights to reflect the fraction of each category that is nondurable. The nondurable specification reported in column 4 indicates a lower level of inequality in 1980/1982 than the benchmark, but a larger increase over time. In particular, the implied change through 2007 is 0.46 log points, which is 11 log points larger than the full-expenditure WLS estimate of 0.35.

Column 5 of Table 3 drops tobacco. Smoking patterns have changed over time, and differentially across education and income groups. From Figure 4 we see that tobacco is a low-elasticity good for which the relative expenditure of the high-income

¹⁹The data source is Centers for Medicare and Medicaid Services, Office of the Actuary, National Health Statistics Group.

households has declined over time. To the extent that this reflects a change in tastes (expenditure elasticity) rather than total expenditure, this will bias our estimated increase in inequality up. Column 5 indicates that dropping tobacco lowers the implied change in inequality from 0.35 log points to 0.30 log points, a shift that can be anticipated from tobacco's location in the lower-left corner of Figure 4. We have explored dropping other goods as well; the results can be clearly anticipated from Figure 4. For example, dropping cash contributions raises the implied change in income inequality. A more systematic approach to this issue is to explore whether the expenditure elasticity of tobacco and the other goods varies over time, and whether using alternative elasticities affects the results. This is taken up in Section IIIB.

The second-stage estimation uses all five income categories; thus it yields an estimate of inequality across any two income groups. As discussed at the end of Section IB, between 1980 and 2010 the 90–50 after-tax income ratio increased by 21 points, while the 50–10 ratio increased by 13. By sharp contrast, reported total expenditures indicate that the 90–50 consumption ratio increased by 13 points, while the 50–10 ratio actually declined by a point. Our two-stage estimates also suggest that the vast majority of the increase in consumption inequality occurred between the high and middle groups. In particular, the WLS estimates indicate the 31 point increase in the 90–10 consumption ratio can be attributed to an increase of 0.29 in the 90–50 ratio and 0.02 in the 50–10.

Table 4 reports the estimates for income-specific measurement error, ϕ_t^i . In particular, it reports the difference between the highest income group and the lowest income group: $\phi^5 - \phi^1$. These are the estimates of the income-specific intercepts. The rows and columns are arranged in the same manner as in Table 3. The first row point estimates suggest that (relative) income-specific mis-measurement is small and positive, implying that the reported consumption inequality is slightly overstated in the first years of the CE. Specifically, a positive estimate implies a combination of the high-income respondents over-reporting expenditure and the low-income respondents underreporting expenditure. Over time, the estimated relative mis-measurement falls. The estimates suggest that the CE is increasingly missing expenditure by the high-income households (relative to low-income households), generating an understatement of the true increase in consumption inequality. In the recent period (since 2005), mis-measurement seems to be stable, with the point estimates in the last row of Table 4 close to zero.

Before exploring the robustness exercises of the next section, we revisit one of the motivations for this study: the growing discrepancy between aggregate expenditure in the CE and that reported in the national income accounts. In particular, the ratio of reported CE expenditure to that reported in NIPA fell from 0.86 to 0.66 between 1980/1982 and 2008/2010.²⁰ That is, real NIPA consumption expenditure increased by 37 percent over this period, while that in the CE increased only 10 percent, generating a difference of 27 log points. This raises the question of whether correcting for systematic measurement reduces or eliminates this increased discrepancy.

²⁰For this calculation, we omitted healthcare expenses from both the CE and NIPA, as medical expenses represents a major difference in coverage between the two measures.

TABLE 4—CHANGE IN RELATIVE INCOME-SPECIFIC MEASUREMENT ERROR

	(1)	(2)	(3)	(4)	(5)
Relative mis-measurement, 1980–1982					
High-income–low-income	0.09 (0.06)	0.04 (0.05)	0.10 (0.07)	0.16 (0.05)	0.02 (0.05)
Change, 1980–1982/1991–1993	–0.13 (0.06)	–0.04 (0.05)	–0.08 (0.06)	–0.16 (0.06)	–0.02 (0.06)
Change, 1980–1982/2005–2007	–0.30 (0.07)	–0.16 (0.05)	–0.25 (0.06)	–0.28 (0.06)	–0.10 (0.05)
Change, 2005–2007/2008–2010	0.04 (0.06)	0.02 (0.05)	0.03 (0.06)	0.02 (0.04)	0.01 (0.05)
Categories included	All	All	All	Without durables	Without tobacco
Specification	OLS	WLS	WLS	WLS	WLS
First-stage instrument	Income	Income	Lagged expenditure	Income	Income

Notes: This table reports the change in the estimated income-specific measurement error for highest-income respondents relative to lowest-income respondents: $\phi^5 - \phi^1$ from equation (6). The specification for each column is the same as in Table 3. The first row is the level for the period 1980–1982, and the next three rows report the change over the indicated period. Standard errors are calculated using a bootstrap with 100 replications.

Our methodology yields a corrected measure of consumption inequality, but does not speak directly to mean expenditure. In particular, our methodology omits one income group and estimates relative expenditure for the remaining income groups. To move from relative expenditure to aggregate we need to take a stand on expenditure for the omitted group. For illustrative purposes, we report some simple calculations along these lines. First, suppose expenditure is correctly reported for the lowest-income group, which in our sample experienced growth of 7 percent. If this is the case, then implied mean expenditure across all households in our sample increased by 20 percent between 1980/1982 and 2008/2010, or double that estimated directly from reported expenditure.²¹ Thus correcting for systematic measurement error can reduce the discrepancy by roughly 40 percent (10/27). Alternatively, we can ask what expenditure growth of low-income households is required to close the entire gap of 27 points. The answer to this question is 24 percent. That is, the implied mis-measurement of low-income household expenditure growth is 17 percent (24 minus the observed 7 percent), while the aggregate mis-measurement relative to NIPA is 27 percent. While these calculations require taking a stand on true expenditure for one income group, they imply that correcting for changes in systematic measurement error may plausibly bridge a significant part of the growing CE/NIPA expenditure gap.

III. Robustness

The two key assumptions of our Engel curve approach are (i) the demand system is log-linear, and (ii) the income elasticities are stable over time. In this section we explore the sensitivity of our results to relaxing these assumptions.

²¹ This number is obtained using WLS estimates of δ_{it} , the log-difference between expenditure of income group i and the lowest-income group at time t . These estimates imply that the average expenditure increased by 13 log points more than the omitted low-income group between 1980/1982 and 2008/2010.

A. Nonlinear Engel Curves

Recall that our benchmark specification assumes that log expenditure on good j is linear in log total household expenditure, conditional on demographics (equation (3)). We can relax that assumption by allowing for higher-order terms. Specifically, for demographic cell h and good j in time t , we consider

$$(2') \quad \ln x_{hjt}^* - \ln \bar{x}_{hjt}^* = \alpha_{jt}^* + \beta_{1,j} \ln X_{ht}^* + \beta_{2,j} (\ln X_{ht}^*)^2 + \Gamma_j \mathbf{Z}_h + \varphi_{hjt}.$$

As in the benchmark model (3), α_{jt}^* and \mathbf{Z}_h represent a good-time specific intercept and a vector of demographic dummies, respectively, and x_{hjt}^* and X_{ht}^* represent cell h expenditure on good j and total expenditure in year t , respectively. Specification (2') extends the benchmark by incorporating the second-order term $(\ln X_{ht}^*)^2$. A few issues arise in the quadratic specification. Recall that in our first stage, we instrument for total expenditure to address the classical errors in variables problem. The addition of the squared term implies that 2SLS is no longer appropriate. Hausman, Newey, and Powell (1995) address exactly this issue in the context of Engel curves, and we follow their methodology. Specifically, we divide a household's four interviews into two measures of total expenditure (as in the second specification reported in Table 2). Hausman, Newey, and Powell (1995) show how repeated measurements of total expenditure for each household can be exploited to correct for measurement error in our quadratic first-stage.

A second concern was identified by Banks, Blundell, and Lewbel (1997)—henceforth, BBL—in their important analysis of quadratic Engel curves. In particular, BBL argue that $\beta_{2,j}$ will in general depend on relative prices. Recall from the benchmark specification that we raised the question of whether the first-order term $\beta_{1,j}$ depends on relative prices. We explicitly deal with this possibility in the next subsection. BBL show that if the linear term is price invariant then the second-order term will not be, except in knife-edge cases. To proceed in such an environment, let $b(\mathbf{p})$ be an aggregate price index constructed from the price vector $\mathbf{p} = (\mathbf{p}_1, \dots, \mathbf{p}_J)$. Then the coefficient on $(\ln X_{ht}^*)^2$ can be generalized to $b(\mathbf{p})\beta_{2,j}$. As in BBL, we consider a common price index $b(\mathbf{p})$ for all goods j , but one that will vary over time due to price movements.²² If we normalize $b(\mathbf{p}) = 1$ at 1994–1996 prices, then the first stage estimation on 1994–1996 data yields the $\beta_{2,j}$ implied by (2') evaluated at 1994–1996 prices. However, the second stage must accommodate changes in the price index $b(\mathbf{p})$ over time.

Turning to the second stage, we have

$$(5') \quad \hat{x}_{hjt} = \alpha_{jt} + \beta_{1,j} \ln X_{it}^* + \beta_{2,j} b(\mathbf{p}_t) (\ln X_{it}^*)^2 + \phi_t^i + \varepsilon_{hjt},$$

where as before a $\hat{}$ reflects that we have adjusted \tilde{x}_{hjt} for demographics using the estimates of Γ_j from the first stage. Note that we explicitly include $b(\mathbf{p}_t)$ in the second-stage expression. We maintain the benchmark assumptions regarding

²²BBL discuss general nonlinear demand systems as well as estimate a quadratic extension of the AIDS system (QAIDS). While our benchmark differs from the QAIDS system, the BBL critique remains relevant for a broad class of nonlinear demand systems.

TABLE 5—TRENDS IN CONSUMPTION INEQUALITY: NONLINEAR ENGEL CURVES

	(1)	(2)	(3)	(4)
log inequality, 1980–1982	0.98 (0.16)	0.81 (0.15)	0.70 (0.12)	0.78 (0.17)
log change, 1980–1982/1991–1993	0.47 (0.17)	0.29 (0.11)	0.46 (0.11)	0.26 (0.12)
log change, 1980–1982/2005–2007	0.42 (0.18)	0.30 (0.12)	0.45 (0.13)	0.19 (0.13)
log change, 2005–2007/2008–2010	< 0.01 (0.13)	0.04 (0.09)	0.06 (0.09)	0.06 (0.09)
Categories included	All	All	Without durables	Without tobacco
	OLS	WLS	NWLS	WLS

Notes: This table depicts the results for estimated changes in consumption inequality for top versus bottom income quintiles from our nonlinear specification described in Section III. The rows of the table correspond to the rows in Table 3. Standard errors are calculated using a bootstrap with 100 replications.

systematic measurement, and thus α_{jt} and ϕ_t^i will capture good-specific and income-specific mis-measurement at time t . The good-time specific intercept also captures the first-order effects on demand stemming from relative price movements. As in the benchmark, our assumptions regarding the nature of the good-income-time specific measurement error contained in ε_{hjt} ensures the residual is uncorrelated with the regressors. Moreover, ε_{hjt} includes the deviation of $\ln X_{hjt}^*$ and $(\ln X_{hjt}^*)^2$ from the respective means for household h 's income group, as was the case in the benchmark (see equation (6)).

In the second stage, the first-stage estimates of $\beta_{1,j}$ and $\beta_{2,j}$ are our generated regressors, which we interact with income-group dummy variables. The coefficient on $\hat{\beta}_{1,j}$ interacted with income group i at time t is our estimate of $\ln X_{i,t}^*$. From (5'), we see that the coefficient on $\hat{\beta}_{2,j}$ is an estimate of $b(\mathbf{p}_t)(\ln X_{i,t}^*)$, and is therefore not an unbiased estimate of squared log expenditure. Note that we do not need to include an estimate of $b(\mathbf{p}_t)$ directly in the second stage, but rather exploit the fact that the coefficient on $\beta_{2,j}$ is allowed to vary freely across each second-stage sample period. This is sufficient to accommodate the instability of $\beta_{2,j}$ over time, generating a consistent estimate of log expenditure from the coefficient on $\beta_{1,j}$. This is sufficient for our purposes, as we are not interested in estimating $b(\mathbf{p}_t)$ and $(\ln X_{it}^*)^2$ independently.

We estimate (5') for 1980–1982, 1991–1993, 2005–2007, and 2008–2010 surveys. In Table 5 we report the estimated level of inequality in 1980–1982, and then the log change over time, following the layout of our benchmark Table 3. Columns 1 and 2 estimate the second stage via OLS and WLS, respectively, where the latter weights goods by their share in NIPA PCE. Column 3 implements the weighted nonlinear specification restricting attention to nondurables only, and column 4 excludes tobacco. Recall that in the nonlinear expenditure system we instrument with lagged expenditure and therefore, in contrast to the benchmark tables, Table 5 does not vary the instrument set across specifications. The standard errors in all specifications are bootstrapped.

Comparing Table 5 to our benchmark Table 3 suggests that nonlinearities do not have a significant impact on the estimated inequality. Specifically, the baseline

inequality for the 1980–1982 period is 0.81 in the WLS specification of Table 5, column 2, compared to 0.90 in Table 3, column 2. The change in inequality is also similar with the nonlinear specification. Table 5, column 2 reports an increase of 30 log points between 1980–1982 and 2007/2009, compared to the benchmark estimates of 0.35. As in the benchmark, dropping durables leads to a larger estimated increase in inequality while dropping tobacco lowers the estimate. The change during the Great Recession is slightly positive in the nonlinear specifications, compared to -0.05 in the linear model; although in all specifications, this change is imprecisely measured. More generally, the precision of the nonlinear estimates is significantly lower than in the linear specification. We view this robustness exercise as suggesting that nonlinear terms do not substantially change the benchmark conclusions regarding systematic measurement error biasing down reported consumption inequality.

B. Stability of Expenditure Elasticities

A key assumption in our methodology is that expenditure elasticities are stable over time. The danger in this regard is that expenditure elasticities may depend on relative prices or other attributes of the goods that may have changed over time. (Any such changes that affect the intercept of the Engel curve are accounted for by the good-time dummy variables.) This concern may be relevant given the 30 year span between the 1980 and 2010 surveys. A second concern involves the baseline expenditure inequality in 1994–1996. Our benchmark results suggest that inequality in recent surveys is understated. An alternative interpretation is that inequality is correctly measured in the recent surveys, but overstated in the 1994–1996 surveys, generating systematically biased first-stage elasticities.

To explore these issues, we have re-estimated expenditure elasticities at different points in the sample. Figure 5 depicts a scatter plot of the 1994–1996 elasticities (horizontal axis) against those estimated from the 1980–1982 surveys (panel A) and from the 2008–2010 surveys (panel B). The ordinal ranking of goods is extremely stable. The correlation of our benchmark elasticities with these alternative elasticities is 0.90 with the 1980–1982 elasticities and 0.96 with the 2008–2010 elasticities. There is a slight fanning out of the elasticities over time. In particular, the standard deviation of the elasticities across goods is 0.59 in 1980–1982, 0.69 in the benchmark, and 0.73 in 2008–2010. This difference is consistent with the benchmark results showing mis-measured inequality in the later sample that worsens with time. If total consumption inequality is systematically underreported in the later samples, the estimated expenditure elasticities will tend to be increasingly biased away from one. Of course, it could also be consistent with the hypothesis that inequality is correctly measured in the later sample, but *underreported* in 1994–1996 (and earlier), biasing our benchmark elasticities toward one.

We can explore this issue further by performing our second-stage estimation using elasticities estimated from the later sample. In doing so, we avoid using the same sample in the first and second stages. Doing otherwise would undermine the orthogonality assumption necessary for the second stage. In particular, if the residual error terms are the same in the first and second stages, our second stage regressors (the estimated elasticities with the inherited sampling error) will not in general be orthogonal to the error term. This was one motivation for our use of the 1994–1996

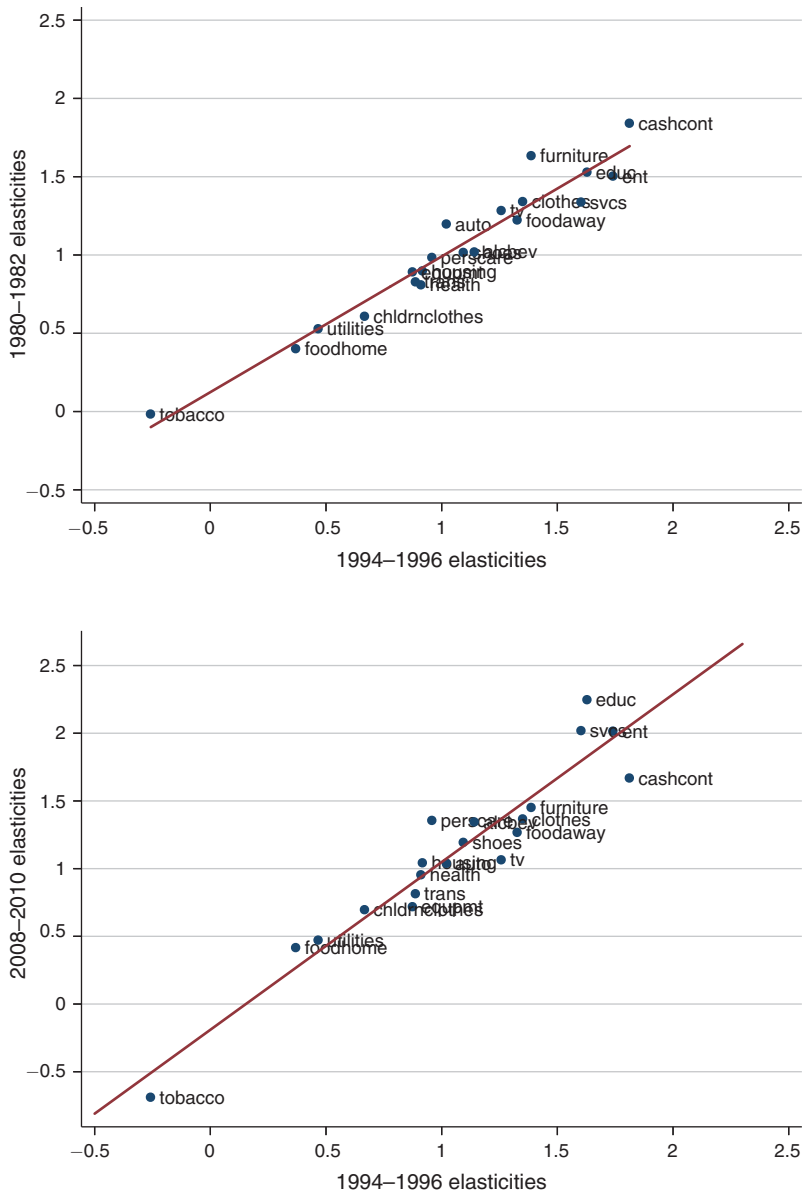


FIGURE 5. STABILITY OF EXPENDITURE ELASTICITIES OVER TIME

Notes: The top panel depicts a scatter plot of the 20 expenditure elasticities estimated using the 1980–1982 CE sample versus our benchmark 1994–1996 first stage reported in Table 2. The fitted regression line has a slope of 0.87 and an R^2 of 0.93. The bottom panel replaces the 1980–1982 estimates with estimates using 2008–2010 surveys. The fitted line has slope 1.24 and an R^2 of 0.90.

CE. To circumvent this problem in our robustness exercise, we use the elasticities estimated in 2005–2007 to compute the change in inequality between 1980–1982 and 2008–2010.

These alternative elasticities, under the WLS specification, yield an estimated level of log inequality of 0.70 in 1980–1982. This contrasts with the estimate of 0.85

obtained using the 1994–1996 elasticities. As expected, the more dispersed elasticities from 2005–2007 generate lower levels of estimated inequality. Nevertheless, the change in log consumption inequality between 1980 and 2010 is estimated to be 0.36 using the 2005–2007 elasticities. This is actually greater than the 0.31 point estimate reported in Table 3. We have also estimated the demand elasticities using the 1983–2007 sample, that is, just trimming the beginning and end reference periods. These elasticities generate a change in consumption inequality of 0.34 log points between 1980–1982 and 2008–2010.

IV. Conclusion

The results presented in this paper suggest that increases in consumption inequality mirror that of income inequality to a much greater extent than implied by reported total expenditure. The basis of this reinterpretation is the reported shift of high-income households' consumption toward luxuries and away from necessities relative to the consumption baskets of low-income households. The Engel curve approach allows us to use the detailed expenditure reports on different classes of goods to correct for systematic measurement error. Our modeling of measurement error is broad in that we allow biases to vary across good-year and income class-year, as well as allowing for classical (non-systematic) mis-measurement at the level of good-household-year interaction. The attraction of the CE is that it is a comprehensive survey of expenditure across many goods, and this richness can be exploited using a simple demand system. The approach requires assumptions, including that our demand system is correctly specified and that the expenditure elasticities are stable across periods. We have explored the validity of these assumptions in Section III and found the results are robust to alternative specifications. Our interpretation of the data provides a parsimonious explanation of the inconsistency between reported expenditure inequality, reported savings and income inequality, and the fact that the high-income households report a substantial shift in expenditure toward luxuries relative to low-income households.

REFERENCES

- Aguiar, Mark A., and Mark Bilts.** 2011. "Has Consumption Inequality Mirrored Income Inequality?" National Bureau of Economic Research Working Paper 16807.
- Aguiar, Mark, and Mark Bilts.** 2015. "Has Consumption Inequality Mirrored Income Inequality?: Dataset." *American Economic Review*. <http://dx.doi.org/10.1257/aer.20120599>.
- Aguiar, Mark, and Erik Hurst.** 2007. "Life-Cycle Prices and Production." *American Economic Review* 97 (5): 1533–59.
- Aguiar, Mark, and Erik Hurst.** 2013. "Deconstructing Lifecycle Expenditure." *Journal of Political Economy* 121 (3): 437–62.
- Attanasio, Orazio, Erich Battistin, and Hidehiko Ichimura.** 2007. "What Really Happened to Consumption Inequality in the US?" In *Hard-to-Measure Goods and Services: Essays in Honor of Zvi Griliches*, edited by Ernst R. Berndt and Charles R. Hulten, 515–43. Chicago: University of Chicago Press.
- Attanasio, Orazio, and Steven J. Davis.** 1996. "Relative Wage Movements and the Distribution of Consumption." *Journal of Political Economy* 104 (6): 1227–62.
- Attanasio, Orazio, Erik Hurst, and Luigi Pistaferri.** 2012. "The Evolution of Income, Consumption, and Leisure Inequality in the US, 1980–2010." National Bureau of Economic Research Working Paper 17982.
- Banks, James, Richard Blundell, and Arthur Lewbel.** 1997. "Quadratic Engel Curves and Consumer Demand." *Review of Economics and Statistics* 79 (4): 527–39.

- Battistin, Erich.** 2003. "Errors in Survey Reports of Consumption Expenditures." Institute for Fiscal Studies Working Paper W03/07.
- Blundell, Richard, and Ben Etheridge.** 2010. "Consumption, Income, and Earnings Inequality in Britain." *Review of Economic Dynamics* 13 (1): 76–102.
- Blundell, Richard, Luigi Pistaferri, and Ian Preston.** 2008. "Consumption Inequality and Partial Insurance." *American Economic Review* 98 (5): 1887–1921.
- Blundell, Richard, and Ian Preston.** 1998. "Consumption Inequality and Income Uncertainty." *Quarterly Journal of Economics* 113 (2): 603–40.
- Bosworth, Barry, and Sarah Anders.** 2008. "Saving and Wealth Accumulation in the PSID, 1984–2005." Center for Retirement Research Working Paper 2008-2.
- Bosworth, Barry, and Rosanna Smart.** 2009. "Evaluating Micro-Survey Estimates of Wealth and Saving." Center for Retirement Research Working Paper 2009-4.
- Browning, Martin, and Thomas Crossley.** 2009. "Are Two Cheap, Noisy Measures Better Than One Expensive, Accurate One?" *American Economic Review* 99 (2): 99–103.
- Cutler, David M., and Lawrence F. Katz.** 1992. "Rising Inequality? Changes in the Distribution of Income and Consumption in the 1980's." *American Economic Review* 82 (2): 546–51.
- Dahl, Molly, Thomas DeLeire, and Jonathan A. Schwabish.** 2011. "Estimates of Year-to-Year Volatility in Earnings and in Household Incomes from Administrative, Survey, and Matched Data." *Journal of Human Resources* 46 (4): 750–74.
- Deaton, Angus S., and John Muellbauer.** 1980a. "An Almost Ideal Demand System." *American Economic Review* 70 (3): 312–26.
- Deaton, Angus S., and John Muellbauer.** 1980b. *Economics and Consumer Behavior*. Cambridge, UK: Cambridge University Press.
- Deaton, Angus, and Christina Paxson.** 1994. "Intertemporal Choice and Inequality." *Journal of Political Economy* 102 (3): 437–67.
- DeBacker, Jason, Bradley Heim, Vasia Panousi, Shanthi Ramnath, and Ivan Vidangos.** 2013. "Rising Inequality: Transitory or Persistent? New Evidence from a Panel of U.S. Tax Returns." *Brookings Papers on Economic Activity* 46 (1): 67–142.
- Garner, Thesai, George Janini, William Passero, Laura Paszkiewicz, and Mark Vendemia.** 2006. "The Consumer Expenditure Survey: A Comparison with Personal Expenditures." *Bureau of Labor Statistics*. http://www.bls.gov/cex/pce_compare_0203.pdf.
- Gottschalk, Peter, and Robert Moffitt.** 1994. "The Growth of Earnings Instability in the U.S. Labor Market." *Brookings Papers on Economic Activity* 25 (2): 217–72.
- Gottschalk, Peter, and Robert Moffitt.** 2009. "Household Risks: The Rising Instability of U.S. Earnings." *Journal of Economic Perspectives* 23 (4): 3–24.
- Greenspan, Alan, and James Kennedy.** 2007. "Sources and Uses of Equity Extracted from Homes." Board of Governors of the Federal Reserve System (U.S.), Finance and Economics Discussion Series 2007-20.
- Guvenen, Fatih.** 2007. "Learning Your Earning: Are Labor Income Shocks Really Very Persistent?" *American Economic Review* 97 (3): 687–712.
- Hausman, Jerry A., Whitney K. Newey, and J. L. Powell.** 1995. "Nonlinear Errors in Variables: Estimation of Some Engel Curves." *Journal of Econometrics* 65 (1): 205–33.
- Heathcote, Jonathan, Fabrizio Perri, and Giovanni L. Violante.** 2010. "Unequal We Stand: An Empirical Analysis of Economic Inequality in the United States, 1967–2006." *Review of Economic Dynamics* 13 (1): 15–51.
- Heathcote, Jonathan, Kjetil Storesletten, and Giovanni L. Violante.** 2005. "Two Views of Inequality over the Life Cycle." *Journal of the European Economic Association* 3 (2-3): 765–75.
- Huggett, Mark, Gustavo Ventura, and Amir Yaron.** 2011. "Sources of Lifetime Inequality." *American Economic Review* 101 (7): 2923–54.
- Jappelli, Tullio, and Luigi Pistaferri.** 2010. "Does Consumption Inequality Track Income Inequality in Italy?" *Review of Economic Dynamics* 13 (1): 133–53.
- Johnson, David, and Stephanie Shipp.** 1997. "Trends in Inequality Using Consumption-Expenditures: The U.S. from 1960 to 1993." *Review of Income and Wealth* 43 (2): 133–52.
- Kaplan, Greg, and Giovanni L. Violante.** 2010. "How Much Consumption Insurance Beyond Self-Insurance?" *American Economic Journal: Macroeconomics* 2 (4): 53–87.
- Kopczuk, Wojciech, Emmanuel Saez, and Jae Song.** 2010. "Earnings Inequality and Mobility in the United States: Evidence from Social Security Data since 1937." *Quarterly Journal of Economics* 125 (1): 91–128.
- Krueger, Dirk, and Fabrizio Perri.** 2006. "Does Income Inequality Lead to Consumption Inequality? Evidence and Theory." *Review of Economic Studies* 73 (1): 163–93.

- Meyer, Bruce D., and James X. Sullivan.** 2009. "Five Decades of Consumption and Income Poverty." National Bureau of Economic Research Working Paper 14827.
- Monti, Holly, and Graton Gathright.** 2013. "Measuring Earnings Instability Using Survey and Administrative Data." U.S. Census Bureau Working Paper 260.
- Parker, Jonathan, Annette Vissing-Jørgensen, and Nicholas Ziebarth.** 2009. "Inequality in Expenditure in the Twentieth Century." http://japarker.scripts.mit.edu/docs/PVZ_slides_ptex7.pdf.
- Petev, Ivaylo D., Luigi Pistaferri, and Itay Saporta-Eksten.** 2011. "An Analysis of Trends, Perceptions, and Distributional Effects in Consumption." In *The Great Recession*, edited by David B. Grusky, Bruce Western, and Christopher Wimer, 161–95. New York: Russell Sage Foundation.
- Sabelhaus, John, and Jeffrey A. Groen.** 2000. "Can Permanent-Income Theory Explain Cross-Sectional Consumption Patterns?" *Review of Economics and Statistics* 82 (3): 431–38.
- Slesnick, Daniel T.** 2001. *Consumption and Social Welfare: Living Standards and their Distribution in the United States*. Cambridge, UK: Cambridge University Press.
- Storesletten, Kjetil, Christopher I. Telmer, and Amir Yaron.** 2004. "Consumption and Risk Sharing over the Life Cycle." *Journal of Monetary Economics* 51 (3): 609–33.

This article has been cited by:

1. Chao Li, Wenyu Lao, Xiang Li, Yuhan Zhang. 2024. Automated workforce, financial precarities and family consumption: The importance of demand-side policies under the background of automation applications. *Economic Analysis and Policy* **84**, 1287-1308. [[Crossref](#)]
2. Jon X. Eguia, Dimitrios Xeferis. 2024. Lognormal (re)distribution: A macrofounded theory of inequality. *European Economic Review* **170**, 104863. [[Crossref](#)]
3. Melanie Krause, André Seidel. 2024. Unlocking neighborhood density. *Journal of Urban Economics* **144**, 103708. [[Crossref](#)]
4. SANGYUP CHOI, JEEYEON PHI. 2024. Impact of Uncertainty Shocks on Income and Wealth Inequality. *Journal of Money, Credit and Banking* **35**. [[Crossref](#)]
5. Jibrán Hussain, Saeed Siyal, Riaz Ahmad, Qaiser Abbas, Yu Yitian, Liu Jin. 2024. Impact of Energy Crises on Income Inequality: An Application of Piketty's Hypothesis to Pakistan. *Economies* **12**:10, 259. [[Crossref](#)]
6. Robert F. Dittmar, Christian Schlag, Julian Thimme. 2024. Nonsubstitutable Consumption Growth Risk. *Management Science* **44**. [[Crossref](#)]
7. Heng-Chuan Kao, Hsiao-Wen Hung. 2024. Patent protection, externalities, and income inequality. *The Manchester School* **92**:5, 466-493. [[Crossref](#)]
8. Terje Eggum, Erling Røed Larsen. 2024. Is the Housing Market an Inequality Generator?. *Review of Income and Wealth* **70**:3, 697-722. [[Crossref](#)]
9. Daniel R. Carroll, André Victor D. Ludovice, Eric R. Young. Optimal fiscal reform with many taxes 7, . [[Crossref](#)]
10. XIAOLU ZHAO. 2024. DOES THE NEW URBANIZATION POLICY PROMOTE RESIDENTS' CONSUMPTION EQUALITY IN CHINA?. *The Singapore Economic Review* **37**, 1-18. [[Crossref](#)]
11. Kirill Borusyak, Xavier Jaravel. 2024. Are trade wars class wars? The importance of trade-induced horizontal inequality. *Journal of International Economics* **150**, 103935. [[Crossref](#)]
12. Davide Melcangi, Vincent Sterk. 2024. Stock Market Participation, Inequality, and Monetary Policy. *Review of Economic Studies* **200**. [[Crossref](#)]
13. Tong Wu, Juan C. Rocha, Kevin Berry, Tomas Chaigneau, Maike Hamann, Emilie Lindkvist, Jiangxiao Qiu, Caroline Schill, Alon Shepon, Anne-Sophie Crépin, Carl Folke. 2024. Triple Bottom Line or Trilemma? Global Tradeoffs Between Prosperity, Inequality, and the Environment. *World Development* **178**, 106595. [[Crossref](#)]
14. Adrián Espinosa-Gracia, Sofía Jiménez, Raquel Langarita, Julio Sánchez-Chóliz. 2024. Stratification and Inequality in Labor Incomes in Spain, 1980–2014; an Analysis by Sectors, Skills, and Gender. *Forum for Social Economics* **78**, 1-23. [[Crossref](#)]
15. Domenico Ferraro, Vytautas Valaitis. 2024. Consumption Quality and Employment Across the Wealth Distribution. *Review of Economic Studies* **105**. [[Crossref](#)]
16. Mark Aguiar, Mark Bilal, Corina Boar. 2024. Who Are the Hand-to-Mouth?. *Review of Economic Studies* **105**. [[Crossref](#)]
17. Sagiri Kitao, Tomoaki Yamada. 2024. The time trend and life-cycle profiles of consumption. *Review of Economics of the Household* **105**. [[Crossref](#)]
18. Erik Hembre, J. Michael Collins, Samuel Wylde. 2024. A rising tide lifts all homes? Housing consumption trends for low-income households since the 1980s. *Journal of Public Economics* **233**, 105102. [[Crossref](#)]

19. Jian Xie, Jiabin Wang, Tianyi Lei. 2024. Geographic dispersion, tax administration and corporate tax burden: evidence from China. *International Journal of Emerging Markets* **105**. . [[Crossref](#)]
20. FUMITAKA NAKAMURA. 2024. Household Income, Portfolio Choice, and Heterogeneous Consumption Responses to Monetary Policy Shocks. *Journal of Money, Credit and Banking* **105**. . [[Crossref](#)]
21. Miao Jin, Yu-Jane Liu, Juanjuan Meng, Yu Zhang. 2024. Transmission of Income Variations to Consumption Variations: The Role of the Firm. *Review of Economics and Statistics* **106**:2, 423-436. [[Crossref](#)]
22. Victor Couture, Cecile Gaubert, Jessie Handbury, Erik Hurst. 2024. Income Growth and the Distributional Effects of Urban Spatial Sorting. *Review of Economic Studies* **91**:2, 858-898. [[Crossref](#)]
23. Yiqi Tang, Qifeng Zhang, Kai Fang. 2024. Does international trade reduce global carbon inequality? Evidence from a producer-consumer shared responsibility. *Journal of Environmental Management* **355**, 120307. [[Crossref](#)]
24. Georg Duernecker, Berthold Herrendorf, Ákos Valentinyi. 2024. Structural Change within the Services Sector and the Future of Cost Disease. *Journal of the European Economic Association* **22**:1, 428-473. [[Crossref](#)]
25. Giacomo De Giorgi, Luca Gambetti, Costanza Naguib. 2024. The Black and white differential in income and consumption dynamics. *The Journal of Economic Inequality* **105**. . [[Crossref](#)]
26. Shengjie Hong, Liangjun Su, Yaqi Wang. 2024. INFERENCE IN PARTIALLY IDENTIFIED PANEL DATA MODELS WITH INTERACTIVE FIXED EFFECTS. *Econometric Theory* **91**, 1-62. [[Crossref](#)]
27. Yunda Cheung, G. Alfredo Minerva. City, Amenities, and Welfare 1-21. [[Crossref](#)]
28. Kebing Liu, Qingyuan Gong. Measurement and Analysis of China's Fashion Events on Social Media: A Study of Shanghai Fashion Week 369-383. [[Crossref](#)]
29. Paul Ho. 2024. Estimating the effects of demographics on interest rates: A robust Bayesian perspective. *Journal of Economic Dynamics and Control* **158**, 104772. [[Crossref](#)]
30. Laura Heras Recuero. 2024. The Rise of the Middle Class and the Pattern of Consumption Imports in Latin America. *SSRN Electronic Journal* **28**. . [[Crossref](#)]
31. Nittai Bergman, Nir Jaimovich, Itay Saporta-Eksten. 2024. The Distributional Impact of Sectoral Supply and Demand Shifts: A Unified Framework. *SSRN Electronic Journal* **80**. . [[Crossref](#)]
32. Sudong Hua. 2024. Business Cycle Adaptations. *SSRN Electronic Journal* **72**. . [[Crossref](#)]
33. Yan Luo, Shu Tian, Ningyu Zhou. The Benefits of Small Business Fintech Lending: Evidence from Entrepreneurs' Consumption Structure **105**, . [[Crossref](#)]
34. Axelle Ferriere, Philipp Grübener, Dominik Sachs. 2024. Optimal Redistribution: Rising Inequality vs. Rising Living Standards. *SSRN Electronic Journal* **105**. . [[Crossref](#)]
35. Sudong Hua. 2024. Home Production, Skill Heterogeneity and the Labor Wedge. *SSRN Electronic Journal* **89**. . [[Crossref](#)]
36. Maximilian von Ehrlich. The Importance of EU Cohesion Policy for Economic Growth and Convergence **102**, . [[Crossref](#)]
37. Xuepin Wu, Yongjun Ma. 2023. The causes of internal habit formation among Chinese urban residents: a multi-layer model perspective. *Economic Research-Ekonomska Istraživanja* **36**:3. . [[Crossref](#)]
38. Mehedi Hasan Oni. 2023. Progressive income taxation and consumption baskets of rich and poor. *Journal of Economic Dynamics and Control* **157**, 104758. [[Crossref](#)]

39. Myroslav Pidkuyko. 2023. Heterogeneous spillovers of housing credit policy. *Review of Economic Dynamics* **51**, 39-59. [[Crossref](#)]
40. Conglong Fang, Qinghua Shi. 2023. Expenditure elasticity and consumption inequality in rural China. *Applied Economics Letters* **30**:20, 2902-2906. [[Crossref](#)]
41. Ruigong Wang, Li Gao, Yaling Zhu, Ying Liu, Yangyan Li, Jiachen He. 2023. Urban–Rural Integration Empowers High-Quality Development of Tourism Economy: Mechanism and Empirical Evidence. *Sustainability* **15**:22, 15893. [[Crossref](#)]
42. Xingguang Li, Xuexi Huo. 2023. Impact of ICT adoption on household consumption: evidence from apple growers in China. *Electronic Commerce Research* **53**. . [[Crossref](#)]
43. Jonathan Heathcote, Fabrizio Perri, Giovanni L. Violante, Lichen Zhang. 2023. More unequal we stand? Inequality dynamics in the United States, 1967–2021. *Review of Economic Dynamics* **50**, 235-266. [[Crossref](#)]
44. Shiqiang Sun, Pingzhang Lv. The role of tax regulation on private consumption: An analysis based on China's Tax System Structure **89**, . [[Crossref](#)]
45. Heran Zheng, Richard Wood, Daniel Moran, Kuishuang Feng, Alexandre Tisserant, Meng Jiang, Edgar G. Hertwich. 2023. Rising carbon inequality and its driving factors from 2005 to 2015. *Global Environmental Change* **82**, 102704. [[Crossref](#)]
46. Longwu Liang, Mingxing Chen, Xiaoping Zhang. 2023. Measuring inequality of household carbon footprints between income groups and across consumption categories in China. *Journal of Cleaner Production* **418**, 138075. [[Crossref](#)]
47. Tamkinat Rauf. 2023. Differential sensitivity to adversity by income: Evidence from a study of Bereavement. *Social Science Research* **115**, 102920. [[Crossref](#)]
48. Jonathan Cribb, Robert Joyce, Thomas Wernham. 2023. Twenty-five years of income inequality in Britain: the role of wages, household earnings and redistribution. *Fiscal Studies* **44**:3, 251-274. [[Crossref](#)]
49. Zhou Jiang, Maoxia Zeng, Mingming Shi. 2023. E-commerce and Consumption Inequality in China. *China & World Economy* **31**:5, 61-86. [[Crossref](#)]
50. Rafael Guntin, Pablo Ottonello, Diego J. Perez. 2023. The Micro Anatomy of Macro Consumption Adjustments. *American Economic Review* **113**:8, 2201-2231. [[Abstract](#)] [[View PDF article](#)] [[PDF with links](#)]
51. Hongzhan Tao, Tao Song. 2023. Trade liberalisation, imperfect pass-through and cost of living: evidence from Chinese cities. *Economic Research-Ekonomska Istraživanja* **36**:2. . [[Crossref](#)]
52. Laura Silvia Lungu. 2023. Bling-Bling politics: exposure to status-goods consumption shapes the social policy preferences of the less affluent. *Socio-Economic Review* **21**:2, 1057-1082. [[Crossref](#)]
53. Marco Leonardi, Enrico Moretti. 2023. The Agglomeration of Urban Amenities: Evidence from Milan Restaurants. *American Economic Review: Insights* **5**:2, 141-157. [[Abstract](#)] [[View PDF article](#)] [[PDF with links](#)]
54. Redouane Elkamhi, Chanik Jo. 2023. Asset holders' consumption risk and tests of conditional CCAPM. *Journal of Financial Economics* **148**:3, 220-244. [[Crossref](#)]
55. Julien Blasco, Elvire Guillaud, Michaël Zemmour. 2023. The inequality impact of consumption taxes: An international comparison. *Journal of Public Economics* **222**, 104897. [[Crossref](#)]
56. Jian Zhu, Zifang Li, Hui Wang. 2023. Internet Development and Urban–Rural Consumption Inequality: Evidence from Chinese Cities. *Sustainability* **15**:12, 9755. [[Crossref](#)]
57. Xuepin Wu, Yongjun Ma. 2023. Research on the comparison effect of urban residents' consumption. *Journal of Business Research* **160**, 113812. [[Crossref](#)]

58. Sanguk Kwon, Shawn Ni. 2023. Has consumption inequality mirrored income inequality: new evidence from a Korean household panel. *Applied Economics Letters* **30**:6, 719-723. [[Crossref](#)]
59. Giovanni Carnazza, Paolo Liberati, Giuliano Resce. 2023. Income-related inequality in smoking habits: A comparative assessment in the European Union. *Health Policy* **128**, 34-41. [[Crossref](#)]
60. Dean Jolliffe, Christoph Lakner. Measuring Global Poverty in a Changing World 1-25. [[Crossref](#)]
61. Jiayi Li, Sumei Luo, Guangyou Zhou. 2023. Electronic payment, natural environment and household consumption: Evidence from China household finance survey. *International Review of Financial Analysis* **85**, 102472. [[Crossref](#)]
62. Daniel Carroll, André Victor Doherty Ludovice, Eric R. Young. 2023. Optimal Fiscal Reform with Many Taxes. *SSRN Electronic Journal* **105**. . [[Crossref](#)]
63. Husna Memon, Amir Rubin. 2023. Sentiment Inequality, Relative Performance of Firms, and the Stock Market. *SSRN Electronic Journal* **4**. . [[Crossref](#)]
64. Paul L. Levine, Alexander Mihailov, Stephen McKnight, Jonathan Swarbrick. Limited Asset Market Participation and Monetary Policy in a Small Open Economy **105**, . [[Crossref](#)]
65. Haichao Fan, Li Li, Min Zhang. 2023. Internet Upgrade and Rural Household Consumption. *SSRN Electronic Journal* **12**. . [[Crossref](#)]
66. Andre Seidel, Melanie Krause. Jue Insight: Unlocking Neighborhood Density **105**, . [[Crossref](#)]
67. Sun Shiqiang, Pingzhang Lv, Liu Yujia. The Influence of Tax Regulation on Private Consumption: An Analysis Based on Tax System in China **89**, . [[Crossref](#)]
68. Alexandre Gaillard, Philipp Wangner, Christian Hellwig, Nicolas Werquin. 2023. Consumption, Wealth, and Income Inequality: A Tale of Tails. *SSRN Electronic Journal* **89**. . [[Crossref](#)]
69. David Weisbach, Thomas Coleman. 2023. How Progressive is the U.S. Tax System?. *SSRN Electronic Journal* **105**. . [[Crossref](#)]
70. Francesco Pappadà, Kenneth S. Rogoff. 2023. Rethinking the Informal Economy and the Hugo Effect. *SSRN Electronic Journal* **105**. . [[Crossref](#)]
71. Alexandre Gaillard, Christian Hellwig, Philipp Wangner, Nicolas Werquin. 2023. Inequality Accounting: A Tale of Tails. *SSRN Electronic Journal* **89**. . [[Crossref](#)]
72. Gang Li, Xufeng Cui, Lan Pan, Yufei Wang. 2023. Land Transfer and Rural Household Consumption Diversity: Promoting or Inhibiting?. *Land* **12**:1, 203. [[Crossref](#)]
73. Joachim Hubmer. 2023. The Race Between Preferences and Technology. *Econometrica* **91**:1, 227-261. [[Crossref](#)]
74. Silvia Emili, Federica Galli. 2022. Self-perceptions and perceptions of peers: their role in understanding expenditure behaviours. *Quality & Quantity* **56**:6, 4573-4597. [[Crossref](#)]
75. David Splinter. 2022. Income Mobility and Inequality: Adult-Level Measures From the Us Tax Data Since 1979. *Review of Income and Wealth* **68**:4, 906-921. [[Crossref](#)]
76. Eugenio Rojas, Felipe Saffie. 2022. Non-homothetic sudden stops. *Journal of International Economics* **139**, 103680. [[Crossref](#)]
77. Xiaodi Qin, Haitao Wu, Yifeng Xie, Xiaofang Zhang. 2022. Lagging behind the Joneses: Relative Deprivation and Household Consumption in Rural China. *Agriculture* **12**:11, 1912. [[Crossref](#)]
78. Fabio Clementi, Vasco Molini, Francesco Schettino, Haider A. Khan, Michele Fabiani. 2022. Polarization and its discontents: Morocco before and after the Arab Spring. *The Journal of Economic Inequality* **105**. . [[Crossref](#)]
79. Fatih Guvenen, Greg Kaplan, Jae Song, Justin Weidner. 2022. Lifetime Earnings in the United States over Six Decades. *American Economic Journal: Applied Economics* **14**:4, 446-479. [[Abstract](#)] [[View PDF article](#)] [[PDF with links](#)]

80. Javier Cravino, Andrei Levchenko, Marco Rojas. 2022. Population Aging and Structural Transformation. *American Economic Journal: Macroeconomics* 14:4, 479-498. [[Abstract](#)] [[View PDF article](#)] [[PDF with links](#)]
81. Junfeng Zhao, Jinling Yan, Xiaodong Yang, Chunxia Nie, Hui Sun, Qiying Ran. 2022. Government competition, corruption and green total factor energy efficiency: An empirical analysis from china. *Frontiers in Environmental Science* 10. . [[Crossref](#)]
82. Esa Karonen, Mikko Niemelä. 2022. Necessity-Rich, Leisure-Poor: The Long-Term Relationship Between Income Cohorts and Consumption Through Age-Period-Cohort Analysis. *Journal of Family and Economic Issues* 43:3, 599-620. [[Crossref](#)]
83. Karolina Safarzyńska, Jeroen C J M van den Bergh. 2022. ABM-IAM: optimal climate policy under bounded rationality and multiple inequalities. *Environmental Research Letters* 17:9, 094022. [[Crossref](#)]
84. T. Y. Ivakhnenko, A. V. Polbin. 2022. Income Inequality and Propensity to Consume in Russia's Regions. *Regional Research of Russia* 12:3, 378-385. [[Crossref](#)]
85. Rebecca Diamond, Cecile Gaubert. 2022. Spatial Sorting and Inequality. *Annual Review of Economics* 14:1, 795-819. [[Crossref](#)]
86. Clemens C. Struck. 2022. Wealth, price levels, and product quality. *International Economics* 170, 32-48. [[Crossref](#)]
87. Sumei Luo, Yongkun Sun, Rui Zhou. 2022. Can fintech innovation promote household consumption? Evidence from China family panel studies. *International Review of Financial Analysis* 82, 102137. [[Crossref](#)]
88. Shafiu Ibrahim Abdullahi, Ahmad Muhammad Tsauni, Mosab I. Tabash. Gross Domestic Savings, Household Consumption, and Inequality in Africa 115-137. [[Crossref](#)]
89. Ivan Lichner, Štefan Lyócsa, Eva Výrostová. 2022. Nominal and discretionary household income convergence: The effect of a crisis in a small open economy. *Structural Change and Economic Dynamics* 61, 18-31. [[Crossref](#)]
90. Fabio Clementi, Michele Fabiani, Vasco Molini, Francesco Schettino. Is Inequality Systematically Underestimated in Sub-Saharan Africa? A Proposal to Overcome the Problem 30, . [[Crossref](#)]
91. Chadwick Curtis, Julio Garín, Robert Lester. 2022. Working, consuming, and dying: Quantifying the diversity in the american experience. *Journal of Economic Dynamics and Control* 138, 104357. [[Crossref](#)]
92. Serene Tan. 2022. Income inequality and endogenous market structure under directed search. *Journal of Economic Theory* 201, 105423. [[Crossref](#)]
93. Francisco J Buera, Joseph P Kaboski, Richard Rogerson, Juan I Vizcaino. 2022. Skill-Biased Structural Change. *The Review of Economic Studies* 89:2, 592-625. [[Crossref](#)]
94. Jonathan D. Fisher, David S. Johnson, Timothy M. Smeeding, Jeffrey P. Thompson. 2022. Inequality in 3-D: Income, Consumption, and Wealth. *Review of Income and Wealth* 68:1, 16-42. [[Crossref](#)]
95. Kim Abildgren, Andreas Kuchler, America Solange Lohmann Rasmussen, Henrik Sejerbo Sørensen. 2022. Registers or surveys – Does the type of microdata matter for empirical analyses of consumption behavior?. *Journal of Economic and Social Measurement* 45:3-4, 237-254. [[Crossref](#)]
96. Chunkai Zhao, Yaqian Wu, Jianhao Guo. 2022. Mobile payment and Chinese rural household consumption. *China Economic Review* 71, 101719. [[Crossref](#)]
97. Antonin Pottier. 2022. Expenditure elasticity and income elasticity of GHG emissions: A survey of literature on household carbon footprint. *Ecological Economics* 192, 107251. [[Crossref](#)]
98. Katie Pybus, Madeleine Power, Kate E. Pickett, Richard Wilkinson. 2022. Income inequality, status consumption and status anxiety: An exploratory review of implications for sustainability and directions for future research. *Social Sciences & Humanities Open* 6:1, 100353. [[Crossref](#)]

99. Francesco Pappada. 2022. The Dynamics of Tax Compliance. *SSRN Electronic Journal* **105**. . [[Crossref](#)]
100. Francesco Pappada. 2022. The Dynamics of Tax Compliance. *SSRN Electronic Journal* **105**. . [[Crossref](#)]
101. William Daniel Dupor, Marios Karabarbounis, Marianna Kudlyak, M. Saif Mehkari. 2022. Regional Consumption Responses and the Aggregate Fiscal Multiplier. *SSRN Electronic Journal* **105**. . [[Crossref](#)]
102. Fabio Clementi, Michele Fabiani, Vasco Molini, Francesco Schettino. 2022. Is Inequality Systematically Underestimated in Sub-Saharan Africa? A Proposal to Overcome the Problem. *SSRN Electronic Journal* **149**. . [[Crossref](#)]
103. Luigi Pisano, Luca Riva, Andrea Stella. 2022. Price Heterogeneity and Consumption Inequality. *SSRN Electronic Journal* **113**. . [[Crossref](#)]
104. Lukas Nord. 2022. Shopping, Demand Composition, and Equilibrium Prices. *SSRN Electronic Journal* **105**. . [[Crossref](#)]
105. Jiayi Li, Sumei Luo, Guangyou Zhou. Electronic Payment, Natural Environment, and Household Consumption: Evidence from China Household Finance Survey **26**, . [[Crossref](#)]
106. Brant Abbott, Giovanni Gallipoli. 2022. Permanent-income inequality. *Quantitative Economics* **13**:3, 1023-1060. [[Crossref](#)]
107. Renu Yadav. Zero Customer Defection 139-153. [[Crossref](#)]
108. ĽUBOŠ PÁSTOR, PIETRO VERONESI. 2021. Inequality Aversion, Populism, and the Backlash against Globalization. *The Journal of Finance* **76**:6, 2857-2906. [[Crossref](#)]
109. Ruchika Agarwala, Vinod Vasudevan. 2021. Relating Household Consumption Expenditures to Road Traffic Fatalities: A Rural–Urban Study. *Transportation Research Record: Journal of the Transportation Research Board* **2675**:12, 1317-1326. [[Crossref](#)]
110. Shinsuke Ikeda, Takeshi Ojima. 2021. Tempting goods, self-control fatigue, and time preference in consumer dynamics. *Economic Theory* **72**:4, 1171-1216. [[Crossref](#)]
111. Le Wen, Krishna P. Paudel, Youhua Chen, Qinying He. 2021. Urban segregation and consumption inequality: Does hukou conversion matter in China?. *Review of Development Economics* **25**:4, 2298-2322. [[Crossref](#)]
112. Olivier Coibion, Yuriy Gorodnichenko, Dmitri Koustas. 2021. Consumption Inequality and the Frequency of Purchases. *American Economic Journal: Macroeconomics* **13**:4, 449-482. [[Abstract](#)] [[View PDF article](#)] [[PDF with links](#)]
113. Alvaro Castano Garcia, Aimee Ambrose, Anna Hawkins, Stephen Parkes. 2021. High consumption, an unsustainable habit that needs more attention. *Energy Research & Social Science* **80**, 102241. [[Crossref](#)]
114. Estelle Dauchy, Francisco Navarro-Sanchez, Nathan Seegert. 2021. Taxation and inequality: Active and passive channels. *Review of Economic Dynamics* **42**, 156-177. [[Crossref](#)]
115. Deepak Malghan, Hema Swaminathan. 2021. Global trends in intra-household gender inequality. *Journal of Economic Behavior & Organization* **189**, 515-546. [[Crossref](#)]
116. Reza Najarzadeh, Alireza Keikha, Hassan Heydari. 2021. Dynamics of consumption distribution and economic fluctuations. *Economic Change and Restructuring* **54**:3, 847-876. [[Crossref](#)]
117. Xinhua Gu, ChunKwok Lei, Li Sheng, Qingbin Zhao. 2021. Global current account imbalances and the link between income and consumption inequality. *Review of International Economics* **29**:3, 557-572. [[Crossref](#)]
118. Liming Hou, Shao-Chieh Hsueh, Shuoxun Zhang. 2021. Digital Payments and Households' Consumption: A Mental Accounting Interpretation. *Emerging Markets Finance and Trade* **57**:7, 2079-2093. [[Crossref](#)]

119. Qingbin Zhao, Chun Kwok Lei, Lei Peng, Xinhua Gu. 2021. The U.S.-Sino different links between income and consumption inequality. *Applied Economics Letters* **28**:9, 713-716. [[Crossref](#)]
120. Yavuz Arslan, Bulent Guler, Temel Taskin. 2021. PRICE SEARCH, CONSUMPTION INEQUALITY AND EXPENDITURE INEQUALITY OVER THE LIFE -CYCLE. *International Economic Review* **62**:1, 295-320. [[Crossref](#)]
121. Luca Secondi. 2021. Estimating Household Consumption Expenditure at Local Level In Italy: The Potential of the Cokriging Spatial Predictor. *Social Indicators Research* **153**:2, 651-674. [[Crossref](#)]
122. Sudong Hua. 2021. The Roles of Home Production and Skill Heterogeneity in the Labor Wedge. *SSRN Electronic Journal* **55**. . [[Crossref](#)]
123. M. Saif Mehkari, William Daniel Dapor, Marios Karabarbounis, Marianna Kudlyak. 2021. Regional Consumption Responses and the Aggregate Fiscal Multiplier. *SSRN Electronic Journal* **105**. . [[Crossref](#)]
124. Arpit Gupta, Anup Malani, Bartek Woda. 2021. Explaining the Income and Consumption Effects of COVID in India. *SSRN Electronic Journal* **105**. . [[Crossref](#)]
125. Deepak Malghan, Hema Swaminathan. 2021. Global Trends in Intra-household Gender Inequality. *SSRN Electronic Journal* **105**. . [[Crossref](#)]
126. Miao Jin, Yu-Jane Liu, Juanjuan Meng, Yu Zhang. 2021. Transmission of Income Variations to Consumption Variations: The Role of the Firm. *SSRN Electronic Journal* **67**. . [[Crossref](#)]
127. Rebecca Diamond, Enrico Moretti. 2021. Where is Standard of Living the Highest? Local Prices and the Geography of Consumption. *SSRN Electronic Journal* **105**. . [[Crossref](#)]
128. Kai Arvai, Katja Mann. 2021. Consumption Inequality in the Digital Age. *SSRN Electronic Journal* **108**. . [[Crossref](#)]
129. Sungwoo Hong, Seungcho Lee, Jin-O Kim, Misook Park, Yeo Joon Yoon. 2021. ### ## # # # #### ## ## (Income and Consumption Inequality in Latin America and Policy Implications for South Korea). *SSRN Electronic Journal* **245**. . [[Crossref](#)]
130. Job Boerma, Loukas Karabarbounis. 2021. Inferring Inequality With Home Production. *Econometrica* **89**:5, 2517-2556. [[Crossref](#)]
131. Diego Comin, Danial Lashkari, Martí Mestieri. 2021. Structural Change With Long-Run Income and Price Effects. *Econometrica* **89**:1, 311-374. [[Crossref](#)]
132. Olivier Coibion, Yuriy Gorodnichenko, Marianna Kudlyak, John Mondragon. 2020. Greater Inequality and Household Borrowing: New Evidence from Household Data. *Journal of the European Economic Association* **18**:6, 2922-2971. [[Crossref](#)]
133. Nazim Hussain, Aqeel Ahmed, Muhammad Imran Khan, Wenhua Zhu, Zahid Nadeem, Muhammad Bilal. 2020. A REAL-TIME UPDATED PORTRAYAL OF COVID-19 DIAGNOSIS AND THERAPEUTIC OPTIONS. *Journal of Experimental Biology and Agricultural Sciences* **8**:Spl-1-SARS-CoV-2, S21-S33. [[Crossref](#)]
134. Eric Mengus, Roberto Pancrazi. 2020. Endogenous Partial Insurance and Inequality. *Journal of the European Economic Association* **18**:5, 2270-2314. [[Crossref](#)]
135. William G. Gale. 2020. Tackling the federal debt problem fairly. *The Journal of Economic Education* **51**:3-4, 332-358. [[Crossref](#)]
136. Chris Gilleard, Paul Higgs. 2020. Precarity and the assumption of rising insecurity in later life: a critique. *Ageing and Society* **40**:9, 1849-1866. [[Crossref](#)]
137. Brant Abbott, Robin Brace. 2020. Has consumption inequality mirrored wealth inequality in the Survey of Consumer Finances?. *Economics Letters* **193**, 109289. [[Crossref](#)]

138. Barak Libai, Yakov Bart, Sonja Gensler, Charles F. Hofacker, Andreas Kaplan, Kim Kötterheinrich, Eike Benjamin Kroll. 2020. Brave New World? On AI and the Management of Customer Relationships. *Journal of Interactive Marketing* 51:1, 44-56. [[Crossref](#)]
139. Hamid NoghaniBehambari, Masha Rahnamamoghadam. 2020. Is income inequality reflected in consumption inequality in Iran?. *Middle East Development Journal* 12:2, 284-303. [[Crossref](#)]
140. Choonsung Park. 2020. Consumption, reservation wages, and aggregate labor supply. *Review of Economic Dynamics* 37, 54-80. [[Crossref](#)]
141. Arthur Grimes, Sean Hyland. 2020. Measuring cross-country material wellbeing and inequality using consumer durables. *Scottish Journal of Political Economy* 67:3, 248-271. [[Crossref](#)]
142. Job Boerma, Loukas Karabarbounis. 2020. Labor market trends and the changing value of time. *Journal of Economic Dynamics and Control* 115, 103885. [[Crossref](#)]
143. Daniel MacDonald, Yasemin Dildar. 2020. Social and psychological determinants of consumption: Evidence for the lipstick effect during the Great Recession. *Journal of Behavioral and Experimental Economics* 86, 101527. [[Crossref](#)]
144. Shubin Wang, Junsheng Ha, Hakan Kalkavan, Serhat Yüksel, Hasan Dinçer. 2020. IT2-Based Hybrid Approach for Sustainable Economic Equality: A Case of E7 Economies. *Sage Open* 10:2. . [[Crossref](#)]
145. Luis Miguel Fonseca, José Pedro Domingues, Alina Mihaela Dima. 2020. Mapping the Sustainable Development Goals Relationships. *Sustainability* 12:8, 3359. [[Crossref](#)]
146. Neil Amin-Smith, Orazio P. Attanasio. 2020. Consumption and Wage Inequality in the US: The Dynamics of the Last Three Decades. *Fiscal Studies* 41:1, 7-38. [[Crossref](#)]
147. La-Bhus Fah Jirasavetakul, Christoph Lakner. 2020. The Distribution of Consumption Expenditure in Sub-Saharan Africa: The Inequality Among All Africans. *Journal of African Economies* 29:1, 1-25. [[Crossref](#)]
148. Mark Setterfield. 2020. Managing the discontent of the losers. *Review of Social Economy* 78:1, 77-97. [[Crossref](#)]
149. Robin Maialeh. Contemporary Economics and Inequality 5-38. [[Crossref](#)]
150. James Cloyne, Clodomiro Ferreira, Paolo Surico. 2020. Monetary Policy when Households have Debt: New Evidence on the Transmission Mechanism. *The Review of Economic Studies* 87:1, 102-129. [[Crossref](#)]
151. Raghuram Iyengar, Young-Hoon Park, Qi Yu. 2020. The Impact of Subscription Programs on Customer Purchases. *SSRN Electronic Journal* 105. . [[Crossref](#)]
152. Ana Danieli, Jane Olmstead-Rumsey. 2020. Sector-Specific Shocks and the Expenditure Elasticity Channel During the COVID-19 Crisis. *SSRN Electronic Journal* 105. . [[Crossref](#)]
153. Erich Battistin, Michele De Nadai, Nandini Krishnan. 2020. The Insights and Illusions of Consumption Measurements. *SSRN Electronic Journal* 105. . [[Crossref](#)]
154. John Finlay, Trevor Williams. 2020. Sorting Out Housing. *SSRN Electronic Journal* 4. . [[Crossref](#)]
155. Alexandr Kopytov, Nikolai L. Roussanov, Mathieu Taschereau-Dumouchel. 2020. Cheap Thrills: the Price of Leisure and the Global Decline in Work Hours. *SSRN Electronic Journal* 58. . [[Crossref](#)]
156. Redouane Elkamhi, Chanik Jo, Yoshio Nozawa. 2020. A One-Factor Model of Corporate Bond Premia. *SSRN Electronic Journal* 69. . [[Crossref](#)]
157. Tong Zhang. 2020. Ethics and Society. *SSRN Electronic Journal* 105. . [[Crossref](#)]
158. Domenico Ferraro, Vytautas Valaitis. 2020. Wealth and Hours. *SSRN Electronic Journal* 113. . [[Crossref](#)]
159. Juan Carlos Conesa, Begoña Domínguez. 2019. The timing of optimal capital income tax reforms: the role of intangible capital investment. *SERIEs* 10:3-4, 419-438. [[Crossref](#)]

160. Ben Etheridge. 2019. HOUSE PRICES AND CONSUMPTION INEQUALITY. *International Economic Review* **60**:4, 1781-1822. [[Crossref](#)]
161. Vladimir Hlasny, Shireen AlAzzawi. 2019. Asset inequality in the MENA: The missing dimension?. *The Quarterly Review of Economics and Finance* **73**, 44-55. [[Crossref](#)]
162. Alberto Cardaci, Francesco Saraceno. 2019. Inequality and imbalances: a monetary union agent-based model. *Journal of Evolutionary Economics* **29**:3, 853-890. [[Crossref](#)]
163. David H. Autor. 2019. Work of the Past, Work of the Future. *AEA Papers and Proceedings* **109**, 1-32. [[Abstract](#)] [[View PDF article](#)] [[PDF with links](#)]
164. Farid Farrokhi, David Jinkins. 2019. Wage inequality and the location of cities. *Journal of Urban Economics* **111**, 76-92. [[Crossref](#)]
165. Daniel Harenberg, Alexander Ludwig. 2019. IDIOSYNCRATIC RISK, AGGREGATE RISK, AND THE WELFARE EFFECTS OF SOCIAL SECURITY. *International Economic Review* **60**:2, 661-692. [[Crossref](#)]
166. Zhan Wang, Xiangzheng Deng, Gang Liu. 2019. Environmental income in economic growth of a large open economy for the era of eco-urbanization. *Forestry Economics Review* **1**:1, 32-56. [[Crossref](#)]
167. Tommaso Ciarli, Maria Savona. 2019. Modelling the Evolution of Economic Structure and Climate Change: A Review. *Ecological Economics* **158**, 51-64. [[Crossref](#)]
168. Nir Jaimovich, Sergio Rebelo, Arlene Wong. 2019. Trading down and the business cycle. *Journal of Monetary Economics* **102**, 96-121. [[Crossref](#)]
169. Orestes P. Hastings. 2019. Who feels it? Income inequality, relative deprivation, and financial satisfaction in U.S. states, 1973-2012. *Research in Social Stratification and Mobility* **60**, 1-15. [[Crossref](#)]
170. Alberto Cardaci, Francesco Saraceno. 2019. BETWEEN SCYLLA AND CHARYBDIS: INCOME DISTRIBUTION, CONSUMER CREDIT, AND BUSINESS CYCLES. *Economic Inquiry* **57**:2, 953-971. [[Crossref](#)]
171. Leif van Neuss. 2019. THE DRIVERS OF STRUCTURAL CHANGE. *Journal of Economic Surveys* **33**:1, 309-349. [[Crossref](#)]
172. Miguel A. Márquez, Elena Lasarte, Marcelo Lufin. 2019. The Role of Neighborhood in the Analysis of Spatial Economic Inequality. *Social Indicators Research* **141**:1, 245-273. [[Crossref](#)]
173. Andrew Haughwout, Benjamin R. Mandel. Empirical analysis of the US consumer 1-21. [[Crossref](#)]
174. Ray Miller, Neha Bairoliya, David Canning. 2019. Health disparities and the socioeconomic gradient in elderly life-cycle consumption. *The Journal of the Economics of Ageing* **14**, 100176. [[Crossref](#)]
175. Elizabeth Currid-Halkett, Hyojung Lee, Gary D. Painter. 2019. Veblen goods and urban distinction: The economic geography of conspicuous consumption. *Journal of Regional Science* **59**:1, 83-117. [[Crossref](#)]
176. Santiago Acerenza, Néstor Gandelman. 2019. Household Education Spending in Latin America and the Caribbean: Evidence from Income and Expenditure Surveys. *Education Finance and Policy* **14**:1, 61-87. [[Crossref](#)]
177. Fulgence Dominick Waryoba, Li Jing. 2019. Consumption Uncertainty Reduction Among Sweet Potato Smallholder Farmers in Tanzania. *Global Journal of Emerging Market Economies* **11**:1-2, 132-147. [[Crossref](#)]
178. Myroslav Pidkuyko. 2019. Heterogeneous Spillovers of Housing Credit Policy. *SSRN Electronic Journal* **105**. . [[Crossref](#)]
179. Redouane Elkamhi, Chanik Jo. 2019. Countercyclical Stockholders' Consumption Risk and Tests of Conditional CCAPM. *SSRN Electronic Journal* **105**. . [[Crossref](#)]

180. Anthony Cheng, Matthew I. Spiegel. 2019. Towards A Better CPI – Adjusting for Technological Change and Increased Housing Consumption. *SSRN Electronic Journal* **100**. . [[Crossref](#)]
181. Victor Couture, Cecile Gaubert, Jessie Handbury, Erik Hurst. 2019. Income Growth and the Distributional Effects of Urban Spatial Sorting. *SSRN Electronic Journal* **105**. . [[Crossref](#)]
182. Clemens Struck. 2019. Wealth, Price Levels and Product Quality. *SSRN Electronic Journal* **69**. . [[Crossref](#)]
183. Cameron LaPoint, Shogo Sakabe. 2019. Coming in at a Trickle: The Optimal Frequency of Public Benefit Payments. *SSRN Electronic Journal* **105**. . [[Crossref](#)]
184. Hengjie Ai, Anmol Bhandari, Yuchen Chen, Chao Ying. 2019. Capital Misallocation and Risk Sharing. *SSRN Electronic Journal* **372**. . [[Crossref](#)]
185. Jess Benhabib, Alberto Bisin. 2018. Skewed Wealth Distributions: Theory and Empirics. *Journal of Economic Literature* **56**:4, 1261-1291. [[Abstract](#)] [[View PDF article](#)] [[PDF with links](#)]
186. Laura Scherer, Paul Behrens, Arjan de Koning, Reinout Heijungs, Benjamin Sprecher, Arnold Tukker. 2018. Trade-offs between social and environmental Sustainable Development Goals. *Environmental Science & Policy* **90**, 65-72. [[Crossref](#)]
187. Dong-Eun Rhee, Hyoungjong Kim. 2018. Does income inequality increase marginal propensity to consume?. *Applied Economics Letters* **25**:17, 1218-1221. [[Crossref](#)]
188. Ingvild Almås, Åshild Auglånd Johnsen. 2018. The cost of a growth miracle – reassessing price and poverty trends in China. *Review of Economic Dynamics* **30**, 239-264. [[Crossref](#)]
189. Roy van der Weide, Christoph Lakner, Elena Ianchovichina. 2018. Is Inequality Underestimated in Egypt? Evidence from House Prices. *Review of Income and Wealth* **64**:s1. . [[Crossref](#)]
190. Juin-jen Chang, Chia-ying Liu, Wei-neng Wang. 2018. Conspicuous consumption and trade unionism. *Journal of Macroeconomics* **57**, 350-366. [[Crossref](#)]
191. David Hummels, Kwan Yong Lee. 2018. The income elasticity of import demand: Micro evidence and an application. *Journal of International Economics* **113**, 20-34. [[Crossref](#)]
192. Haiyan Ding, Hui He. 2018. A tale of transition: An empirical analysis of economic inequality in urban China, 1986–2009. *Review of Economic Dynamics* **29**, 106-137. [[Crossref](#)]
193. Alberto Cardaci. 2018. Inequality, household debt and financial instability: An agent-based perspective. *Journal of Economic Behavior & Organization* **149**, 434-458. [[Crossref](#)]
194. François Le Grand, Xavier Ragot. 2018. A class of tractable incomplete-market models for studying asset returns and risk exposure. *European Economic Review* **103**, 39-59. [[Crossref](#)]
195. Arjun Jayadev, J.W. Mason, Enno Schröder. 2018. The Political Economy of Financialization in the United States, Europe and India. *Development and Change* **49**:2, 353-374. [[Crossref](#)]
196. Kevin J. Lansing, Agnieszka Markiewicz. 2018. Top Incomes, Rising Inequality and Welfare. *The Economic Journal* **128**:608, 262-297. [[Crossref](#)]
197. Claudio Campanale. 2018. Luxury consumption, precautionary savings and wealth inequality. *The B.E. Journal of Macroeconomics* **18**:1. . [[Crossref](#)]
198. Sam Desiere, Dean Jolliffe. 2018. Land productivity and plot size: Is measurement error driving the inverse relationship?. *Journal of Development Economics* **130**, 84-98. [[Crossref](#)]
199. Maria D. Tito, Wendy E. Dunn. 2018. From Income to Consumption Inequality? Looking through the Lens of Motor Vehicle Purchases. *FEDS Notes* **2018.0**:2132. . [[Crossref](#)]
200. Jonathan Fisher, David Johnson, Timothy Smeeding, Jeffrey Thompson. 2018. Inequality in 3-D: Income, Consumption, and Wealth. *Finance and Economics Discussion Series* **2018.0**:1. . [[Crossref](#)]
201. J. W. Mason. 2018. Income Distribution, Household Debt, and Aggregate Demand: A Critical Assessment. *SSRN Electronic Journal* **105**. . [[Crossref](#)]

202. James Cloyne, Clodomiro Ferreira, Paolo Surico. 2018. Monetary Policy When Households Have Debt: New Evidence on the Transmission Mechanism. *SSRN Electronic Journal* **105**. . [\[Crossref\]](#)
203. Lubos Pastor, Pietro Veronesi. 2018. Inequality Aversion, Populism, and the Backlash Against Globalization. *SSRN Electronic Journal* **2**. . [\[Crossref\]](#)
204. Kirill Borusyak, Xavier Jaravel. 2018. The Distributional Effects of Trade: Theory and Evidence from the United States. *SSRN Electronic Journal* **126**. . [\[Crossref\]](#)
205. Mark Setterfield. 2018. Managing the Discontent of the Losers. *SSRN Electronic Journal* **105**. . [\[Crossref\]](#)
206. Robert F. Dittmar, Christian Schlag, Julian Thimme. 2018. Fuel is Pumping Premiums: A Consumption-Based Explanation of the Value Anomaly. *SSRN Electronic Journal* **105**. . [\[Crossref\]](#)
207. Cristina Bernini, Maria Francesca Cracolici, Cinzia Viroli. 2017. Does Tourism Consumption Behaviour Mirror Differences in Living Standards?. *Social Indicators Research* **134**:3, 1157-1171. [\[Crossref\]](#)
208. Da Zhao, Tianhao Wu, Qiwei He. 2017. Consumption inequality and its evolution in urban China. *China Economic Review* **46**, 208-228. [\[Crossref\]](#)
209. E. Peterson. 2017. Is Economic Inequality Really a Problem? A Review of the Arguments. *Social Sciences* **6**:4, 147. [\[Crossref\]](#)
210. Fran Tonkiss. Commodity or commons? 210-222. [\[Crossref\]](#)
211. Pol Antràs, Alonso de Gortari, Oleg Itskhoki. 2017. Globalization, inequality and welfare. *Journal of International Economics* **108**, 387-412. [\[Crossref\]](#)
212. Nathan Wilmers. 2017. Does Consumer Demand Reproduce Inequality? High-Income Consumers, Vertical Differentiation, and the Wage Structure. *American Journal of Sociology* **123**:1, 178-231. [\[Crossref\]](#)
213. Andreas Fagereng, Elin Halvorsen. 2017. Imputing consumption from Norwegian income and wealth registry data. *Journal of Economic and Social Measurement* **42**:1, 67-100. [\[Crossref\]](#)
214. Marinko ŠKARE, Romina PRŽIKLAS DRUŽETA. 2017. POVERTY AND ECONOMIC GROWTH: A REVIEW. *Technological and Economic Development of Economy* **22**:1, 156-175. [\[Crossref\]](#)
215. Olivier Coibion, Yuriy Gorodnichenko, Lorenz Kueng, John Silvia. 2017. Innocent Bystanders? Monetary policy and inequality. *Journal of Monetary Economics* **88**, 70-89. [\[Crossref\]](#)
216. Chris Belfield, Richard Blundell, Jonathan Cribb, Andrew Hood, Robert Joyce. 2017. Two Decades of Income Inequality in Britain: The Role of Wages, Household Earnings and Redistribution. *Economica* **84**:334, 157-179. [\[Crossref\]](#)
217. LaVaughn M. Henry. 2017. Are Young People Becoming More Risk Averse? An Analysis of Factors Contributing to the Rise in Precautionary Savings Among Young Adults. *Business Economics* **52**:1, 32-40. [\[Crossref\]](#)
218. Cesare Buiatti, Felipe Saenz. 2017. Why Is Europe Falling Behind? Structural Transformation and Services' Productivity Differences between Europe and the U.S. *SSRN Electronic Journal* **116**. . [\[Crossref\]](#)
219. Ki Young Park, Soohyon Kim. 2017. Inequality of Debt and its Macroeconomic Implications: Evidence from South Korea. *SSRN Electronic Journal* **105**. . [\[Crossref\]](#)
220. Da Zhao, Tianhao Wu, Qiwei He. 2017. Consumption Inequality and Its Evolution in Urban China. *SSRN Electronic Journal* **105**. . [\[Crossref\]](#)
221. Bruce D. Meyer, James X. Sullivan. 2017. Consumption and Income Inequality in the U.S. Since the 1960s. *SSRN Electronic Journal* **122**. . [\[Crossref\]](#)

222. Vincent Geloso. 2017. Government and the Economic History of American Income Inequality. *SSRN Electronic Journal* 44. . [[Crossref](#)]
223. Marianne Bertrand, Adair Morse. 2016. Trickle-Down Consumption. *Review of Economics and Statistics* 98:5, 863-879. [[Crossref](#)]
224. Charles M. Beach. 2016. Changing income inequality: A distributional paradigm for Canada. *Canadian Journal of Economics/Revue canadienne d'économique* 49:4, 1229-1292. [[Crossref](#)]
225. . Inequality 69-99. [[Crossref](#)]
226. Charles I. Jones, Peter J. Klenow. 2016. Beyond GDP? Welfare across Countries and Time. *American Economic Review* 106:9, 2426-2457. [[Abstract](#)] [[View PDF article](#)] [[PDF with links](#)]
227. Pablo D. Fajgelbaum, Amit K. Khandelwal. 2016. Measuring the Unequal Gains from Trade *. *The Quarterly Journal of Economics* 131:3, 1113-1180. [[Crossref](#)]
228. Emi Nakamura, Jón Steinsson, Miao Liu. 2016. Are Chinese Growth and Inflation Too Smooth? Evidence from Engel Curves. *American Economic Journal: Macroeconomics* 8:3, 113-144. [[Abstract](#)] [[View PDF article](#)] [[PDF with links](#)]
229. Hyojung Lee, Gary D. Painter. 2016. Consumption inequality in the Great Recession. *Journal of Economic and Social Measurement* 41:2, 145-166. [[Crossref](#)]
230. Daniel Murphy. 2016. Welfare consequences of asymmetric growth. *Journal of Economic Behavior & Organization* 126, 1-17. [[Crossref](#)]
231. Orazio P. Attanasio, Luigi Pistaferri. 2016. Consumption Inequality. *Journal of Economic Perspectives* 30:2, 3-28. [[Abstract](#)] [[View PDF article](#)] [[PDF with links](#)]
232. Johannes Ludwig. Income Shocks or Insurance – What Determines Consumption Inequality? 131-166. [[Crossref](#)]
233. A. Mian, A. Sufi. Who Bears the Cost of Recessions? The Role of House Prices and Household Debt 255-296. [[Crossref](#)]
234. D. Krueger, K. Mitman, F. Perri. Macroeconomics and Household Heterogeneity 843-921. [[Crossref](#)]
235. M. Aguiar, E. Hurst. The Macroeconomics of Time Allocation 203-253. [[Crossref](#)]
236. Eric Mengus, Roberto Pancrazi. 2016. Endogenous Partial Insurance and Inequality. *SSRN Electronic Journal* 145. . [[Crossref](#)]
237. Iksoo Cho. 2016. Local Sales Tax, Cross-Border Shopping, and Distance. *SSRN Electronic Journal* 7. . [[Crossref](#)]
238. Yavuz Arslan, Bulent Guler, Temel Taskin. 2016. Price Search, Consumption Inequality, and Expenditure Inequality Over the Life Cycle. *SSRN Electronic Journal* 105. . [[Crossref](#)]
239. Jane Dokko, Geng Li, Jessica Hayes. 2015. Credit Scores and Committed Relationships. *Finance and Economics Discussion Series* 2015.0:81, 1-57. [[Crossref](#)]
240. Jane Dokko, Geng Li, Jessica Hayes. 2015. Credit Scores and Committed Relationships. *SSRN Electronic Journal* 1. . [[Crossref](#)]
241. Luigi Pisano, Andrea Stella. 2015. Price Heterogeneity and Consumption Inequality. *SSRN Electronic Journal* 113. . [[Crossref](#)]
242. Diana Farrell, Chris Wheat. 2015. Profiles of Local Consumer Commerce: Insights from 12 Billion Transactions in 15 U.S. Metro Areas. *SSRN Electronic Journal* 105. . [[Crossref](#)]
243. Olivier Coibion, Yuriy Gorodnichenko, Lorenz Kueng, John Silvia. 2012. Innocent Bystanders? Monetary Policy and Inequality in the U.S. *SSRN Electronic Journal* 105. . [[Crossref](#)]
244. Kevin J. Lansing, Agnieszka Markiewicz. 2012. Top Incomes, Rising Inequality, and Welfare. *SSRN Electronic Journal* 105. . [[Crossref](#)]