

The Effect of Pollution on Worker Productivity: Evidence from Call Center Workers in China[†]

By TOM Y. CHANG, JOSHUA GRAFF ZIVIN, TAL GROSS, AND MATTHEW NEIDELL*

We investigate the effect of pollution on worker productivity in the service sector by focusing on two call centers in China. Using precise measures of each worker's daily output linked to daily measures of pollution and meteorology, we find that higher levels of air pollution decrease worker productivity. These results manifest themselves at levels of pollution commonly found in large cities throughout the developing and developed world. (JEL J24, L84, O13, P23, P28, Q51, Q53)

A growing body of evidence finds that pollution can reduce the productivity of workers in physically demanding occupations (Graff Zivin and Neidell 2012; Chang et al. 2014; Hanna and Oliva 2015; Archsmith, Heyes, and Saberian 2018; He, Liu, and Salvo 2016; Adhvaryu, Kala, and Nyshadham 2016; and Fu, Viard, and Zhang 2017)¹. Nevertheless, the importance of these occupations to aggregate economic performance in modern economies, where the service and knowledge sectors account for the majority of economic output, is quite modest. Thus, understanding whether pollution limits productivity in higher skilled, cognitively demanding professions is a question of tremendous economic importance. In this paper, we provide the first examination of the effect of pollution on workers whose primary tasks require cognitive rather than physical performance.

In particular, we investigate the effect of pollution on call center workers using a unique panel dataset on the daily productivity of employees at a firm with offices in Shanghai and Nantong, China. Worker output at the call centers are routinely

*Chang: University of Southern California, 701 Exposition Blvd., Los Angeles, CA 90089 (email: tychang@marshall.usc.edu); Graff Zivin: University of California, San Diego, 9500 Gilman Dr., La Jolla, CA 92093 and National Bureau of Economic Research (NBER) (email: jgraffzivin@ucsd.edu); Gross: Boston University, 595 Commonwealth Ave, Boston, MA 02215 and NBER (email: talgross@bu.edu); Neidell: Columbia University, 722 W. 168th St, NY, NY 10032 and NBER (email: mn2191@columbia.edu). We are grateful to Nick Bloom, Jennifer Cao, John Roberts, Jenny Ying, and Zhichun Ying for help with the Ctrip data, with special thanks to James Liang, CEO of Ctrip. We are also grateful to Junjie Zhang and Shuang Zhang for help with the environmental data. We thank conference and seminar participants at Boston University, Goethe University, Hong Kong University of Science and Technology IZA Conference on Labor Market Effects of Environmental Policies, the NBER Health Economics program meeting, the Federal Reserve Bank of New York, Pampeu Fabra University, the University of Rotterdam, the University of Southern California, and the University of Stockholm for useful feedback.

[†]Go to <https://doi.org/10.1257/app.20160436> to visit the article page for additional materials and author disclosure statement(s) or to comment in the online discussion forum.

¹The Archsmith, Heyes, and Saberian (2018) study of baseball umpires is particularly interesting in the context of our study. While it is a physically demanding occupation, cognitive performance (e.g., calling balls and strikes) plays a significant role in worker productivity.

monitored, providing precise measures of each worker's daily output (Bloom et al. 2015). This setting is important for several reasons.

First, while the prior literature has focused on manual labor that requires moderate to substantial physical exertion, the workers in our sample perform "desk jobs" that require minimal physical effort. As such, the mechanism by which pollution might affect productivity is likely to differ significantly. In addition, because the work environment is both indoors and climate controlled, it suggests that any impact is driven largely by particulate matter (PM) pollution, which easily penetrates indoors (Thatcher and Layton 1995, Vette et al. 2001) and is prevalent in our study areas. Exposure to PM pollution can potentially impair productivity through changes in cardiovascular and lung functioning (Seaton et al. 1995); irritation of the ear, nose, throat, and lungs (Pope 2000); as well as through direct impacts on cognitive performance (Ebenstein, Lavy, and Roth 2014).

Moreover, China is a large economy whose dramatic growth over the past several decades has been accompanied by equally dramatic increases in pollution. By many metrics, China's environmental quality ranks among the lowest in the world, rivaled only by major metropolitan areas in India that have witnessed a similar decline in air quality due to increased industrialization and urbanization. An effect on worker productivity would suggest that China's prioritization of industrial expansion over environmental protection throughout the past few decades may have undermined some of the economic growth its policies were designed to achieve. The importance of strong environmental institutions to foster economic prosperity has implications for a wide range of countries that have yet to manage the pollution problems associated with urbanization and industrialization.

The call center we study is Ctrip, China's largest travel agency. Several aspects of the firm's operations allow us to credibly isolate the causal effect of pollution on the marginal product of labor. First, the workers have little discretion over their labor supply, a claim we confirm directly. This is important because such discretion could bias our productivity estimates due to changes in labor composition. If only the most productive workers come to work on polluted days, for example, we would underestimate the productivity effects of pollution. Second, daily variation in pollution in Shanghai and Nantong is plausibly unrelated to the firm's output. The firm serves clients throughout China, and, thus, demand for the firm's services on any given day is likely unrelated to *local* pollution on that particular day. Moreover, because calls are routed at random to the two locations, we can test directly whether such aggregate-level correlation is driving our results.

Finally, a brief pilot program at Ctrip allows us to probe the influence of one potential confounder: traffic. Traffic is a potentially important confounder because it generates pollution and can directly reduce productivity by both creating emotional stress and making employees late for work. We study a randomized experiment at Ctrip that allowed some employees to work from home for part of our study period. That experiment enables us to examine directly the importance of traffic in explaining our results.

Our analysis reveals a statistically significant, negative impact of pollution on the productivity of workers at the firm. A 10-unit increase in the air pollution index (API) decreases the number of daily calls handled by a worker by 0.35 percent on

average.² Productivity declines are largely linearly increasing in pollution levels, with statistically significant results emerging at an API above 100 for some measures of productivity and 150 for all of them. These estimates are robust to the inclusion of meteorology controls, worker-specific fixed effects, and a number of robustness checks that support the contention that we are estimating causal effects. Furthermore, when we decompose this effect, we find that the decrease in calls comes from an increase in the amount of time spent on breaks rather than from changes in the duration of phone calls, a finding consistent with Bloom et al. (2015), who found that breaks were the most malleable aspect of productivity at this firm.

These findings build on a small but growing literature that uses high-frequency worker-level data to examine the impact of air pollution on worker productivity. He, Liu, and Salvo (2016) focuses on two textile factories in China and finds no effect of contemporaneous pollution on worker productivity. Adhvaryu, Kala, and Nyshadham (2014) studies a garment factory in India and finds significant negative effects of pollution on workers' productivity. In the United States, Graff Zivin and Neidell (2012) and Chang et al. (2016) find significant negative effects of pollution on the productivity of farm workers and factory workers, respectively. Below we compare the magnitudes of these estimates and discuss some of the reasons they may differ.

That we find significant effects that consistently manifest themselves at an API of 150 also underscores that these impacts are not isolated to the most polluted cities in the developing world. Major metropolitan areas around the world, most of which employ considerably more nonmanual labor, exceed that level with varying degrees of frequency. For example, Los Angeles, California, experienced 13 days with API greater than 150 in 2014, and Phoenix, Arizona, experienced 33 such days, with nearly half of those exceeding an air quality index of 200.³

The remainder of our paper is organized as follows. In the next section, we discuss the air quality index used to measure pollution in China and the potential mechanisms through which particulate matter—the principal driver of that index—can generate impacts on labor productivity. In Section III, we describe the remainder of the data used for our analysis, and, in Section IV, we present our empirical strategy. Our results are presented in Section V, and Section VI concludes.

I. Background on Pollution

China, like most countries, releases a daily API, which is a composite measure of pollution that ranks air quality based on its associated health risks as a means to facilitate comprehensibility by the public. The index is cardinal, with higher values indicating poorer air quality. Index values less than 100 are generally deemed acceptable, those between 100 and 150 are labeled unhealthy for sensitive groups,

² While API is calculated by determining the maximum value for a nonlinear transformation of three separate pollutants (PM₁₀, NO₂, and SO₂), as detailed in the next section, particulate matter is almost always the driver of API in our sample. More specifically, for the subset of data for which the driving pollutant is reported, particulate matter is the determining pollutant 99.2 percent of the time, and 100 percent of the time for days with an API greater than 100.

³ The index uses a nonlinear pollutant-specific formula to convert each pollutant into a metric meant to capture its relative health risk to the public. The reported index is based on the highest value amongst all indexed pollutants on a given day. See the EPA Air Quality Index Report: http://www3.epa.gov/airdata/ad_rep_aqi.html.

and impacts on the general population begin to emerge at levels greater than 150. The API in China converts concentrations of three criteria air pollutants into a single index, using an algorithm developed by the US Environmental Protection Agency (EPA 2006). The pollutant that has the highest index, referred to as the primary pollutant, determines the API on a given day. In our dataset, for API levels of greater than 50, particulate matter smaller than $10 \mu\text{g}/\text{m}^3$ in diameter (PM_{10}) is the primary pollutant over 99 percent of the time.⁴ As such, we devote the rest of this section to providing a basic scientific background on particulate matter pollution.

Particulate matter consists of airborne solid and liquid particles that range considerably in size. PM is typically divided into fine PM, which includes all particles with a diameter of less than $2.5 \mu\text{g}/\text{m}^3$, and coarse PM, which includes all particles with a diameter between 2.5 and $10 \mu\text{g}/\text{m}^3$.⁵ Coarse PM penetrate into the lungs, while fine PM passes beyond the lung barrier to enter the bloodstream. Particles originate from a variety of sources and are largely the result of fossil fuel combustion, particularly when gases from power plants, industries, and automobiles interact. Given its diminutive size, PM can remain suspended in the air for extended periods of time and travel lengthy distances.

A large body of epidemiological and toxicological literature suggests that exposure to PM harms health (see EPA 2004 for a comprehensive review). These risks arise primarily from changes in pulmonary and cardiovascular functioning (Seaton et al. 1995). Although extreme exposures (or more modest levels for sensitive populations) can be debilitating, even relatively modest levels of exposure may have an impact on worker productivity due to changes in blood pressure; irritation in the ear, nose, throat, and lungs; and mild headaches (Ghio et al. 2000, Pope 2000, and Sorenson et al. 2003). Symptoms can arise in as little as a few hours after exposure, but effects may also be triggered after several days of elevated exposure, particularly for people with existing cardiovascular and respiratory conditions.

Particles at the finer end of the spectrum are a particularly important concern for two reasons. First, the diminutive size of fine PM allows it to easily penetrate buildings (Ozkaynak et al. 1996, Vette et al. 2001), making exposure difficult to avoid, even for office workers. Second, fine PM is small enough to be absorbed into the bloodstream and even travels along the axons of the olfactory and trigeminal nerves into the central nervous system (CNS), where it can become embedded deep within the brain stem (Oberdörster et al. 2004). This, in turn, can cause inflammation of the CNS, cortical stress, and cerebrovascular damage (Peters et al. 2006). Greater exposure to fine particles is associated with lower intelligence and diminished performance over a range of cognitive domains (Suglia et al. 2008, Power et al. 2011, and Weuve et al. 2012). Consistent with this epidemiological evidence, a recent study of Israeli teenagers found that students perform worse on high-stakes exams on days with higher PM levels (Ebenstein, Lavy, and Roth 2014).

⁴ A primary pollutant is not reported when air quality is measured as “good” (i.e., API levels of 0 to 50).

⁵ Importantly, the API measure during our study period does not separately measure fine and coarse PM, but rather a single measure for particulate matter smaller than $10 \mu\text{g}/\text{m}^3$ in diameter (PM_{10}). While we cannot separate out the effects of fine and coarse PM, given the fact that we examine productivity in an indoor, climate controlled environment where only fine PM can easily penetrate, we believe that it is these fine particulates that are driving our results.

While the more dramatic health effects due to pollution exposure may lead to changes in labor supply, milder impairment of respiratory, cardiovascular, and cognitive function may reduce productivity on the intensive margin. Focus, concentration, and critical thinking are all essential components of office-based job performance and depend heavily on a well-functioning brain and CNS. The goal of our analysis is to estimate the effect of pollution on the marginal product of labor, independent of any possible effects on the extensive margin of labor supply. Given the ubiquity of office work and the value it adds to global economic output, the welfare implications of any link between pollution and productivity in this setting are potentially enormous.

II. Data

Our data on worker productivity come from Ctrip International, China's largest travel agency. Ctrip's primary line of business involves making travel arrangements for clients. It earns revenue through commissions from hotels, airlines, and tour operators. In contrast to US and European-based agencies that operate in markets with deep internet penetration, Ctrip conducted much of its business on the telephone during our study period. The firm was listed on the NASDAQ stock exchange in 2003 and its market capitalization was more than \$15 billion by the end of 2015.

Our analysis is focused on Ctrip's call center workers in Shanghai and Nantong who book travel for clients throughout China.⁶ The offices are located in large climate controlled buildings, and are filled with cubicles and modern telecommunications and computing hardware. Equipment and staffing practices are identical at both offices, and both sets of workers follow the same procedural guidelines. A central server automatically routes customer calls and assignments to workers logged into the system, based on a computerized call-queuing system.

All workers in our sample receive compensation based partly on productivity. This productivity-based pay is primarily a function of call and order volumes, with additional adjustments made for call quality. As a result, Ctrip records various measures of the daily on-the-job performance of each of its call center workers. Most relevant for our analysis are three measures: number of phone calls handled per shift, number of minutes spent on the phone, and number of minutes logged in to the call center's computer system (i.e., the number of minutes within the workday that workers are available to handle calls).⁷ We also use data on worker absences and hours worked to assess potential changes in labor supply. Our data span the period from January 1, 2010 to December 9, 2012, with different coverage periods for the two offices.⁸

An additional feature of our data is that, during part of our study period, Ctrip performed a controlled experiment to analyze whether working from home affected

⁶Nantong is approximately 100 kilometers north of Shanghai.

⁷Call quality was assessed based on a 1 percent sample of recorded call transcripts that were audited and scored by an external review team. Unfortunately, we do not have access to this data.

⁸The difference in data coverage periods is due to a combination of pollution data availability and the time coverage of the productivity data provided by the firm. The Shanghai data sample runs from January 1, 2010 to August 14, 2011. The Nantong sample runs from September 1, 2011 to December 9, 2012.

worker performance. Approximately 250 employees from the Shanghai office worked from home during part of our study period, with a comparably sized control group. The experiment ran from December 6, 2010 until August 14, 2011, during which time the home-based workers were provided with the necessary equipment to allow them to perform their usual work responsibilities in a manner identical to that at the office. In Section IV, we exploit this experiment to test whether pollution affects workers even when they do not commute to the office. More details on call center operations and the work-from-home experiment can be found in Bloom et al. (2015).

Our daily pollution data are obtained from the China National Environmental Monitoring Center (CNEMC), which is affiliated with the Ministry of Environmental Protection of China. These data provide a measure of pollution that is based on the average API score across all monitors within a city. During our study period there were ten operating national pollution monitors in Shanghai and five in Nantong. Daily API measures are calculated in four steps: a 24-hour average pollution concentration is calculated at the station level; a city average is calculated from the station averages; the city average is converted to API based on pollutant-specific formulas; and finally, the overall API is defined as the max of individual pollutant APIs.⁹ While we do not observe individual pollutant levels, we do know which pollutant is responsible for a given day's API for a subset of our data—for the Shanghai sample on days when $API > 50$. During our sample period, PM_{10} was the responsible pollutant on all but three days, and on all days with API levels of greater than 100.

Nonetheless, two features of this pollution data make it less than ideal for our purposes. First, these citywide measures of air quality provide an imperfect measure of pollution inside each call center. If this measurement error is classical, it will bias our estimated effect of pollution toward zero. Second, the pollutant most likely to impact workers in our setting, $PM_{2.5}$, was not directly measured during this time period. Instead, we must rely on a proxy variable: measures of PM_{10} , which includes measures of both particles smaller than 2.5 microns in diameter as well as those between 2.5 and 10 microns. As such, our findings cannot definitively attribute our measured effects to a particular pollutant.

Although discrepancies between CNEMC and data from the US embassy in Beijing have called into question the reliability of the CNEMC, recent work finds no evidence of manipulation in our study regions (Ghanem and Zhang 2014). To the extent that it may still exist, such manipulation should be unrelated to demand for travel services. As can be seen in Figure 1, the distribution of pollution in both Shanghai and Nantong are continuously distributed, with no evidence of displacement around important cutoffs, such as when the API reaches 100.

Table 1 presents simple descriptive statistics for our sample. The average API in the merged sample is 66, with an average value of 65 in Shanghai and 69 in Nantong. In comparison, the median air quality index in New York City was 55 in 2014,

⁹ Since citywide measures of pollution are likely to be a noisy measure of the exposure of individual workers in our sample, our estimates may be biased downward.

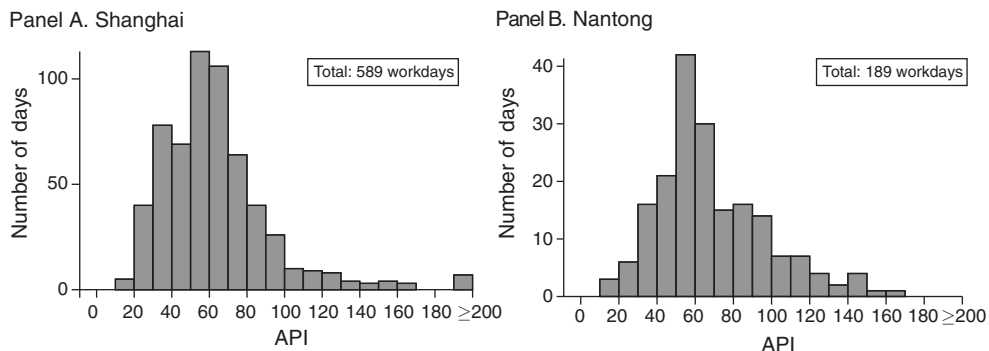


FIGURE 1. HISTOGRAMS OF POLLUTION

Notes: These figures present the distribution of API observed on workdays in our data. See text for details.

TABLE 1—SAMPLE STATISTICS

	Overall (1)	Shanghai (2)	Nantong (3)
<i>Panel A. Environmental data</i>			
Air pollution index (API)	65.7 (41.4)	64.8 (44.7)	68.6 (29.0)
Temperature	66.9 (18.0)	69.5 (17.8)	58.7 (16.3)
API by bin:			
API 0–50	36.9 (8.9)	36.7 (8.8)	37.7 (9.3)
API 50–100	68.7 (13.2)	68.4 (12.9)	69.7 (13.9)
API 100–150	121.2 (13.1)	121.2 (12.1)	121.1 (14.7)
API 150–200	161.9 (11.0)	162.3 (12.4)	160.5 (2.1)
API 200+	404.3 (110.8)	404.3 (110.8)	–
<i>Panel B. Worker-Day level data</i>			
Number of worker-days	359,013	112,678	246,335
Calls	70.9 (45.1)	64.1 (47.0)	74.0 (43.9)
Logged-in minutes	413.3 (167.6)	441.5 (164.5)	400.4 (167.4)
Minutes on phone	222.5 (144.8)	182.1 (142.2)	241.0 (142.2)
Minutes per call	3.0 (1.2)	2.4 (1.1)	3.2 (1.2)

Notes: We measure temperature in degrees Fahrenheit. Standard deviations are in parentheses.

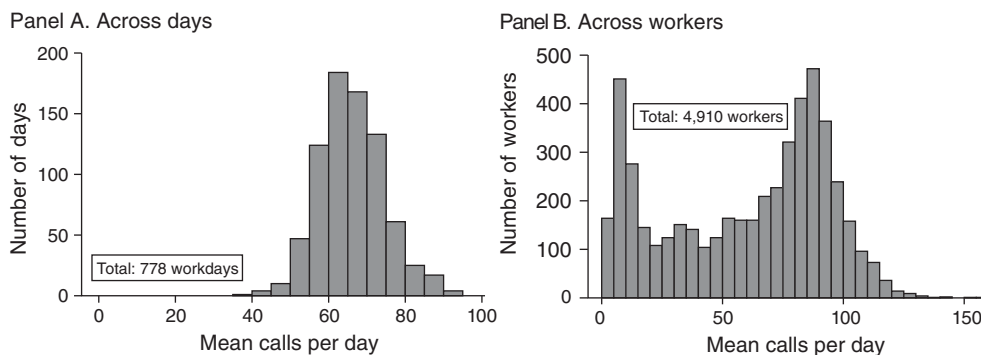


FIGURE 2. HISTOGRAMS OF PRODUCTIVITY

Notes: These figures present the distribution of calls per day in our data. See text for details.

although events in the far right tail are much more common in our study sample.¹⁰ Our study includes 393 workers from Shanghai and 4,499 workers from Nantong, with this difference due to distinct sampling frames for workers across facilities as well as differences in the availability of environmental data. The Shanghai sample follows the subset of workers who participated in the work-from-home experiment from January 1, 2010 to August 14, 2011, while the Nantong sample includes all worker observations from September 1, 2011 to December 9, 2012. Importantly, one of the inclusion criteria for the work-from-home experiment was having at least six months tenure with the firm. Thus, the Shanghai sample, but not the Nantong sample, leaves out workers with short tenure at the firm. As a result, the number of worker-day observations between the two locations is more balanced than the number of workers at each office might suggest. Similarly, the difference in coverage periods for the two cities explains the weather differences between the two samples: the worker-days covered in Nantong are more likely to have occurred during winter than those in Shanghai.

Figure 2 describes the distribution of worker productivity. Panel A plots the distribution of calls per day, which appears to be normally distributed. On a typical day, workers handle an average of 66 calls. Panel B describes the average productivity across workers. There are two peaks in the data corresponding to two distinct types of worker tasks.¹¹ As we describe below, Figure 4 shows that the impacts across productivity quantiles is essentially flat, suggesting that all worker types are impacted similarly by pollution.

¹⁰ Figures are derived from the EPA Air Quality Index Report, which can be found at: http://www3.epa.gov/airdata/ad_rep_aqi.html. Last accessed on February 9, 2016.

¹¹ There are two types of workers: workers that call customers directly, and workers that take calls from customers. The workers that take calls from customers make relatively few calls per day, whereas the workers that make calls to customers make many calls per day. Those two groups lead to the “bimodal” distribution in panel B of Figure 2. Unfortunately, we only observe worker type for a subset of Shanghai workers. For those workers, we have confirmed that the overall productivity effects of pollution are similar. For the full sample, the fact that the overall results are robust to including worker fixed effects suggests that not observing worker type does not bias our estimates.

III. Econometric Model

Our goal is to estimate the effect of pollution on worker productivity. We estimate the following hybrid production function:

$$(1) \quad \log(y_{ijt}) = \beta \times API_{jt} + \mathbf{X}'_{jt}\gamma + \delta_t + \alpha_i + \varepsilon_{ijt}.$$

The outcome y_{ijt} is the measure of daily productivity for each worker, either total number of calls per shift or the number of minutes logged in to the call center's computer system. Because workers clock out of the system when they are not available to field calls, this latter measure captures the length of a worker's breaks taken during the workday. The variable API is a daily average measure of the air pollution index in city j , where β captures the effect of API on our two measures of productivity. Although we specify API linearly here, we also include specifications with a series of API indicator variables to capture potential nonlinear effects of pollution on the outcome of interest. The vector \mathbf{X}_t includes temperature, the only other covariate we consistently observe at both locations. The parameter δ includes day-of-week and year-month indicator variables to account for trends within the week and over time. The variable α_i is a worker-specific fixed effect for those specifications that rely only on within-worker variation in pollution exposure to identify impacts on productivity. Because the error term ε likely exhibits autocorrelation between observations based on the same worker or for all workers on the same day of PM measurement, we allow for two-way clustering (Cameron, Gelbach, and Miller 2011) along those dimensions.

There are several challenges to uncovering a causal effect of pollution on worker productivity. First, individuals can sort into locations based on the amount of pollution in that area, leading to nonrandom assignment of pollution. Moreover, within a location, an individual's labor supply might change in response to pollution. Although the high-frequency-panel nature of our data allows us to overcome the issue of geographic selection—workers are unlikely to sort on daily fluctuations in pollution levels—sample selection due to pollution-induced changes in labor supply remains a potential concern. For example, workers who are most susceptible to pollution may be those least likely to work on more polluted days, thus biasing our estimates of worker productivity if the most susceptible workers also differ in their average level of productivity. Similar concerns regarding worker composition apply if the most susceptible workers shorten their workday in response to pollution. Because workers have very few sick days and limited discretion over their work hours, we suspect that extensive-margin responses of this sort are unlikely in our sample. We explicitly test this claim by examining whether API relates to the probability of working and the number of hours worked (using the regression equation above) and find no effect of API levels on either measure of labor supply.

Another threat to identification lies in the existence of a local factor that both creates local pollution and has a direct effect on worker productivity. Indeed, if firms are directly responsible for much of the local air pollution, a naïve analysis may erroneously conclude that pollution increases productivity. Although this may be a substantial concern for pollution-intensive firms, such as those engaged in

heavy manufacturing, this type of direct linkage between firm-level pollution and productivity is unlikely at the call center that we study or the service sector, more generally.

Of course, indirect linkages also can confound inference in this type of analysis. While it is impossible to rule out all potential factors that may generate a spurious relationship between pollution and productivity, the most salient concern relates to vehicular traffic. The transportation sector is a major contributor to urban air pollution (Fenger 1999), and increases in roadway congestion can simultaneously increase air pollution and commute time for workers.

As described earlier, our analysis of extensive-margin changes in hours worked does not find any evidence for commute-related changes in the length of the workday. Productivity changes on the intensive margin remain a concern if the stress and aggravation from an arduous commute alter performance on the job. To test whether such a traffic channel confounds the results, we exploit a unique feature of our data. For part of the period for which we have data, a subset of workers was randomly assigned to work from home (Bloom et al. 2015). Because employees who worked at home had no commute, their productivity should be unaffected by traffic, thus allowing us to isolate the pollution impacts of interest.

A final concern regarding identification relates to demand-mediated effects. If higher levels of pollution are the result of increased economic activity and travel is a normal good, higher pollution levels could lead to greater demand for Ctrip's services. To the extent that worker slack exists, such changes in demand could conceivably lead to changes in worker productivity. As the largest travel agency in China, Ctrip draws its clients from a broad geographic base both across mainland China and internationally. This fact greatly minimizes concerns that our measured impacts of local air pollution on productivity are driven by demand-side factors. To further bolster this claim, we also test whether a common demand-level shock is driving our results by regressing productivity in Shanghai on Nantong pollution and vice versa, as well as the effect of Beijing pollution—the most polluted city in China—on productivity in Shanghai and Nantong.

IV. Empirical Results

This section presents our empirical results. We begin by exploring the impacts of pollution on the extensive margin through changes in labor supply. This is followed by an analysis of the effect of pollution on the intensive margin through changes in productivity as well as a decomposition of this effect. Finally, we present a series of robustness checks.

A. The Extensive Margin: Labor Supply

Our first task is to assess whether pollution affects labor supply in this setting. Table 2 presents these results. The first column of panel A presents results from a regression in which the dependent variable is an indicator variable for whether

TABLE 2—EFFECT OF POLLUTION ON CALL CENTER LABOR SUPPLY

Dependent variable:	Worked that day		Hours worked	
	(1)	(2)	(3)	(4)
<i>Panel A. Linear</i>				
API/10	−0.0004 [0.0009]	−0.0004 [0.0009]	−0.0004 [0.0047]	−0.0007 [0.0046]
Temperature	−0.001 [0.0028]	−0.001 [0.0026]	0.0058 [0.0091]	0.0057 [0.0088]
Temperature squared/1,000	0.0118 [0.0201]	0.0116 [0.0187]	−0.0305 [0.0771]	−0.0300 [0.0739]
R^2	0.029	0.074	0.046	0.115
Observations	528,001	528,001	171,713	171,713
Worker fixed effects		✓		✓
<i>Panel B. Nonlinear</i>				
API 50–100	0.0112 [0.0076]	0.0100 [0.0074]	0.0055 [0.0053]	0.0054 [0.0051]
API 100–150	−0.0013 [0.0137]	−0.0017 [0.0135]	0.0049 [0.0073]	0.0043 [0.0071]
API 150–200	−0.0121 [0.0141]	−0.0111 [0.0128]	−0.001 [0.0094]	−0.0006 [0.0089]
API 200+	−0.0249 [0.0229]	−0.0238 [0.0229]	−0.0183 [0.0340]	−0.0206 [0.0330]
Temperature	2.9620 [1.2183]	2.4158 [1.0740]	3.2119 [1.1987]	0.0006 [0.0012]
Temperature squared/1,000	0.0096 [0.0199]	0.0097 [0.0185]	−0.0040 [0.0106]	−0.0038 [0.0101]
R^2	0.029	0.074	0.032	0.101
Observations	528,001	528,001	171,713	171,713
Worker fixed effects		✓		✓

Notes: Columns 1 and 2 present linear probability models; columns 3 and 4 present regression estimates when the logarithm of hours worked is the outcome of interest. Standard errors in brackets are clustered on date and worker. The sample consists of worker-day observations in both the Shanghai and Nantong offices. All regressions include year-month-specific fixed effects and a control for the day of the week.

a worker comes to work on a given day. To address planned vacations, we drop absence spells of more than five consecutive days from the sample.¹² We find a small, statistically insignificant relationship between pollution and the probability of working, shown in column 1 of Table 2. The third column of panel A repeats the analysis with a focus on shift length for the subsample of workers on which we have detailed timestamp records.¹³ We find a similarly insignificant effect of pollution

¹² We have 359,013 observations of days when a worker works. When we include days for which an active worker does not work (excluding absence spells of longer than five days), that number increases to 528,001 days.

¹³ Because we have “timeclock” data for only a subset of our sample, the number of observations drops to 171,713 when examining shift length. We also drop worker-day observations for which the implied shift length is implausible: less than 15 minutes, longer than 12 hours, or shorter than the recorded amount of time spent on the phone for that shift.

on hours worked. Both coefficients remain largely unchanged by the addition of worker-specific fixed effects, presented in columns 2 and 4 of Table 2, respectively.

We can also rule out very small effects based on these estimates. For example, the lower 95 percent confidence interval for the probability of working is 0.17 percent, while the estimate for hours worked (in the fixed effects specification) implies a 0.5-minute decrease in time at the office. Both estimates are sufficiently small that we are confident that we can conclude that labor supply is unaffected by air pollution.

Panel B of Table 1 repeats this exercise with indicator variables for API between 50 and 100, 100 and 150, 150 and 200, and 200 plus (with API less than 50 as the reference group). That specification explores potential nonlinear effects of pollution on labor supply. As in the linear case, we find no evidence of pollution impacts on the extensive margin.

This absence of an effect on labor supply is consistent with the institutional realities of the Ctrip workplace, as described earlier. It also implies that our estimates of the effect of pollution on productivity that follow are not affected by sample-selection bias.

B. *The Intensive Margin: Worker Productivity*

Table 3 presents estimates of our main regression specification.¹⁴ The first column of panel A suggests that a 10-unit increase in API decreases the number of calls per shift by 0.35 percent, an effect statistically significant at the 1 percent level. Adding worker-specific fixed effects, shown in column 2, does not appreciably change our estimate. Columns 3 and 4 present estimates of the same regression, but with the logarithm of minutes logged in per shift as the dependent variable. Similar to the effect on the number of phone calls, we find that minutes logged in decreases in response to pollution. Column 3 implies that a 10-unit change in API reduces minutes logged in by 0.25 percent, a finding that is statistically significant and robust to the inclusion of worker-specific fixed effects.¹⁵

Panel B of Table 3 repeats this analysis using the same flexible specification of API as in the previous table. Across columns we find a similar pattern of coefficients. Specifically, we find that productivity monotonically decreases in pollution levels, with statistical significance emerging for minutes logged in at API levels exceeding 100, and near statistical significance for impacts on the number of calls. All results are statistically and economically significant for pollution levels exceeding 150. To compare to the linear estimates, we plot the nonlinear coefficients alongside the linear effects calculated for the midpoint of each bin, shown in Figure 3, based on the cross-sectional estimates for the number of calls. As evident in the figure, the more-flexible estimates align quite closely with the linear estimates. The divergence in the highest bin reflects that the linear estimate is based on an API of 225, while

¹⁴The decrease in sample size in Table 3 relative to the extensive-margin regressions in columns 1 and 2 of Table 2 is due to the fact that the extensive-margin regressions include worker-day observations for days on which the worker does not work (i.e., the average worker works just under five days a week).

¹⁵Including a control for trends (linear, quadratic, and cubic) does not materially affect these results (results not shown).

TABLE 3—EFFECT OF POLLUTION ON CALL CENTER PRODUCTIVITY

Dependent variable:	Number of calls		Minutes logged in	
	(1)	(2)	(3)	(4)
<i>Panel A. Linear</i>				
API/10	-0.0035 [0.0013]	-0.0029 [0.0012]	-0.0025 [0.0010]	-0.0021 [0.0009]
Temperature	0.0008 [0.0030]	0.0017 [0.0023]	0.0025 [0.0020]	0.0031 [0.0018]
Temperature squared/1,000	-0.0029 [0.0230]	-0.0021 [0.0172]	-0.0124 [0.0150]	-0.0173 [0.0132]
R^2	0.136	0.592	0.087	0.238
Observations	359,013	359,013	359,013	359,013
Worker fixed effects		✓		✓
<i>Panel B. Nonlinear</i>				
API 50–100	-0.0049 [0.0124]	-0.0027 [0.0104]	-0.0126 [0.0072]	-0.0100 [0.0066]
API 100–150	-0.0301 [0.0188]	-0.0283 [0.0173]	-0.0285 [0.0131]	-0.0228 [0.0125]
API 150–200	-0.0550 [0.0143]	-0.0486 [0.0165]	-0.0733 [0.0150]	-0.0646 [0.0142]
API 200+	-0.1452 [0.0116]	-0.0919 [0.0258]	-0.0374 [0.0165]	-0.0417 [0.0159]
Temperature	0.0007 [0.0031]	0.0016 [0.0022]	0.0023 [0.0020]	0.003 [0.0018]
Temperature squared/1,000	-0.0036 [0.0220]	-0.0024 [0.0170]	-0.0108 [0.0148]	-0.0162 [0.0130]
R^2	0.136	0.592	0.088	0.238
Observations	359,013	359,013	359,013	359,013
Worker fixed effects		✓		✓

Notes: The logarithm of the indicated dependent variable is the outcome of interest. Standard errors in brackets are clustered on date and worker. The sample consists of worker-day observations in both the Shanghai and Nantong offices. All regressions include year-month-specific fixed effects and a control for the day of the week.

the bin includes all API measures above 200. In general, these estimates suggest an approximately linear effect of pollution on worker productivity.

Based on the results in Table 3, it is unclear whether the decline in the number of calls handled by workers over the course of their shift is driven exclusively by the observed reductions in the amount of time logged into the call system or the duration of those calls. Table 4 presents results that decompose these two channels. The first column examines the impact of pollution on the total amount of minutes spent on the phone per shift. Column 3 examines the impact of pollution on the amount of time spent on each call. The effect of pollution on time on the phone appears to be driven entirely by time logged in and thus the availability of workers to handle calls; time spent on each call is unaffected by pollution. These results are robust to the inclusion of worker-specific fixed effects (columns 2 and 4 of Table 4) and follow a similarly nonlinear pattern as those presented in Table 3. Thus, it appears that the productivity effects of pollution revealed in Table 3 are driven by workers taking more frequent or longer breaks. This finding is consistent with the results of Bloom

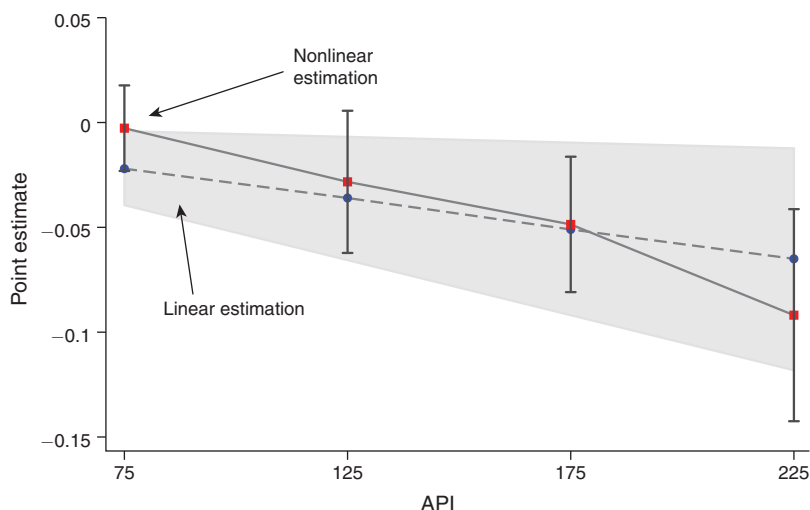


FIGURE 3. COMPARISON OF NONLINEAR AND LINEAR POINT ESTIMATES

Notes: This figure compares implied estimates from the two specifications in the first column of Table 3. The outcome of interest is the logarithm of the number of calls by day. The square markers plot “nonlinear” point estimates from a regression in which we indicate API using mutually exclusive and exhaustive indicator functions. The circle markers plot point estimates from a regression in which we control for API with a single scalar variable. The shaded region plots 95 percent confidence intervals for the linear estimation, and the brackets plot 95 percent confidence intervals for the nonlinear specification. See text for details.

et al. (2015), who found that breaks were the most affected aspect of productivity in this study population.

To test whether the effect of pollution is heterogeneous in baseline worker productivity, we estimate our equation for the two main productivity outcomes using quantile regressions. The coefficients from these regressions along with their 95 percent confidence intervals are shown in Figure 4. The figure clearly shows that, with the exception of the lowest decile, which has by far the largest confidence interval, the coefficients are nearly identical across quantiles for both our main measures of productivity. These results indicate that the effect of air pollution on productivity is remarkably stable across workers, equally affecting both low and high productivity types and thus workers performing different tasks for the firm (e.g., accepting versus placing calls) who vary in their average levels of productivity.

While all of the analyses thus far have assumed a contemporaneous effect of pollution on worker productivity, the effect of pollution may accrue over time. As such, we explore a more dynamic regression specification in which we also include lagged measures of pollution. We also include a lead of pollution in this specification as a falsification test; future pollution should not affect current productivity. The results from this exercise are summarized in Figure 5, which presents estimates from a regression of calls per day (panel A) and total minutes logged in (panel B) on contemporaneous pollution, three lags, and one lead, while controlling for all of the covariates included in our main regressions above. The effect from contemporaneous pollution is statistically significant and larger than the effect from the lags, with only the three-day lag on total minutes on the phone significant at the 5 percent

TABLE 4—DECOMPOSITION OF THE EFFECT OF POLLUTION ON PRODUCTIVITY

Dependent variable:	Minutes on phone		Minutes per phone call	
	(1)	(2)	(3)	(4)
<i>Panel A. Linear</i>				
API/10	-0.0036 [0.0015]	-0.0028 [0.0013]	0.0000 [0.0006]	0.0001 [0.0005]
Temperature	-0.0006 [0.0034]	-0.0001 [0.0025]	-0.0014 [0.0010]	-0.0018 [0.0007]
Temperature squared/1,000	-0.0001 [0.0241]	0.0067 [0.0184]	0.0028 [0.0079]	0.0088 [0.0056]
R^2	0.220	0.731	0.253	0.670
Observations	359,013	359,013	359,013	359,013
Worker fixed effects		✓		✓
<i>Panel B. Nonlinear</i>				
API 50–100	-0.0033 [0.0148]	-0.0042 [0.0117]	0.0016 [0.0078]	-0.0015 [0.0061]
API 100–150	-0.033 [0.0217]	-0.0305 [0.0189]	-0.0029 [0.0077]	-0.0022 [0.0052]
API 150–200	-0.0409 [0.0174]	-0.0412 [0.0197]	0.0141 [0.0102]	0.0074 [0.0083]
API 200+	-0.1418 [0.0212]	-0.0747 [0.0356]	0.0033 [0.0200]	0.0172 [0.0160]
Temperature	-0.0007 [0.0034]	-0.0002 [0.0025]	-0.0014 [0.0010]	-0.0018 [0.0007]
Temperature squared/1,000	-0.0008 [0.0243]	0.007 [0.0185]	0.0028 [0.0080]	0.0094 [0.0057]
R^2	0.220	0.731	0.253	0.670
Observations	359,013	359,013	359,013	359,013
Worker fixed effects		✓		✓

Notes: The logarithm of the indicated dependent variable is the outcome of interest. Standard errors in brackets are clustered on date and worker. The sample consists of worker-day observations in both the Shanghai and Nantong offices. All regressions include year-month-specific fixed effects and a control for the day of the week.

level. Since all other lagged effects are small and statistically insignificant, we view this evidence as supportive of the notion that pollution effects are rather immediate. Reassuringly, the coefficient on future pollution is statistically insignificant and smaller in magnitude than the contemporaneous coefficient.

C. Robustness Checks

As discussed in the previous section, two remaining concerns could threaten the internal validity of the analysis. First, traffic may be a source of both air pollution and a factor that affects worker productivity. Second, the impacts that we find on worker productivity may be the result of changes in the demand for Ctrip services. Since Ctrip serves clients across China, this is tantamount to a concern that local pollution near the call center is correlated with national pollution levels that shape aggregate demand for travel. We discuss each of these in turn.

In order to assess the role of traffic, we analyze the effect of air pollution on workers that participated in a randomized control trial to test the effects of working from

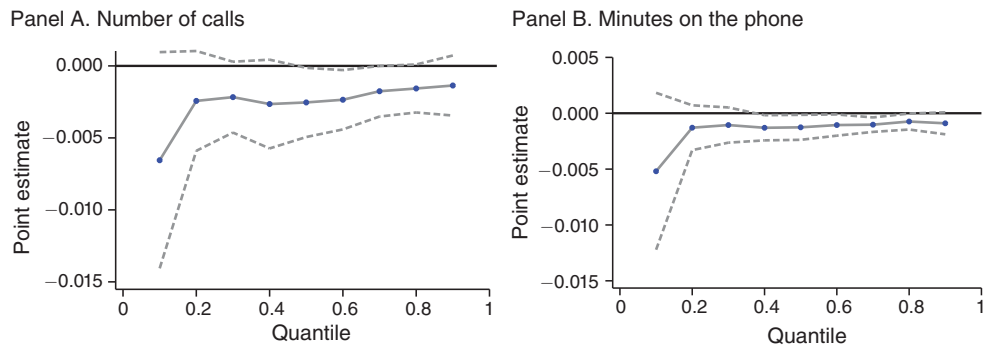


FIGURE 4. QUANTILE REGRESSION RESULTS

Notes: These figures present quantile estimates for the logarithm of the given outcomes on a linear control for API. The quantile regressions include controls for year-month, day of week, hotel-worker status, temperature, and temperature squared. The dashed lines plot 95 percent confidence intervals that are clustered on date and worker.

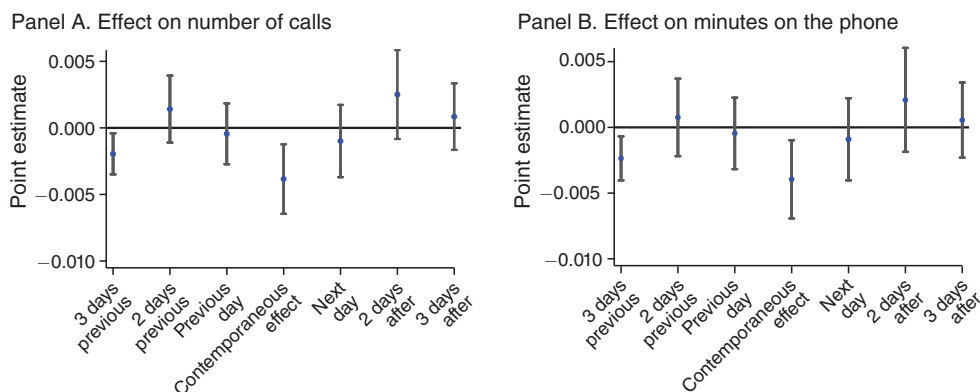


FIGURE 5. EFFECT OF POLLUTION OVER TIME

Notes: These figures present point estimates from a regression of the logarithm of the given outcome on the contemporaneous air pollution index, the index over the past three days, and the index the next day. The regression includes controls for year-month, day of week, hotel-worker status, temperature, and temperature squared. See text for details.

home. That experiment allows us to measure the impact of pollution on workers who worked from home (and therefore did not have to commute to work) compared to the control group (those who volunteered for the experiment but worked from the office) for the duration of the experimental period (December 6, 2010 through August 14, 2011). Table 5 presents the results of this analysis. Columns 1 and 2 present the effect of day of pollution on the logarithm of the number of phone calls taken by workers who worked from the office and at home, respectively. In both cases, the coefficient is negative and statistically significant at conventional levels, and comparable to estimates in Table 2. Columns 3 and 4 of Table 5 present the effect of pollution on the logarithm of minutes logged in to the system for workers who worked from the office and their homes, respectively. The coefficient is again negative, but

TABLE 5—EFFECT OF POLLUTION ON WORKERS WORKING FROM HOME

Dependent variable: Location	Number of calls		Minutes logged in	
	Work (1)	Home (2)	Work (3)	Home (4)
API/10	−0.0057 [0.0016]	−0.0031 [0.0009]	−0.0022 [0.0012]	−0.0004 [0.0007]
Temperature	0.0086 [0.0023]	0.0100 [0.0032]	−0.0011 [0.0015]	−0.0034 [0.0019]
Temperature squared/1,000	−0.0418 [0.0150]	−0.0578 [0.0154]	0.0055 [0.0104]	0.0236 [0.0132]
R^2	0.348	0.209	0.090	0.026
Observations	11,897	14,886	11,892	14,800

Notes: The logarithm of the indicated dependent variable is the outcome of interest. Standard errors in brackets are clustered on date and worker. The sample consists of worker-day observations in both the Shanghai and Nantong offices. All regressions include year-month-specific fixed effects and a control for the day of the week.

in this case neither is statistically significant at conventional levels, likely a reflection of our greatly reduced sample during this experimental period.¹⁶ That the point estimates for the workers in the office are not statistically significantly different from those that work at home suggests that traffic is unlikely to be a source of confounding for the productivity effects described in the previous section.¹⁷

Table 6 explores the possibility that the observed effect of pollution is driven by demand-side factors. To test for such a possibility, we repeat our main analysis with controls for the API in the other city: we add data on the pollution in Nantong for Shanghai workers and pollution in Shanghai for Nantong workers. Thus, the coefficient on other API will reflect the degree to which Nantong pollution affects productivity in Shanghai, and vice versa. A priori, we would not expect to see a statistically significant effect from pollution in a different location unless they were driven by a common factor correlated with aggregate demand. As an additional test of demand side factors, we also include data on the API from Beijing. In all cases, we find that the coefficient for pollution from a different location is much smaller and statistically insignificant, while the coefficient for own-location pollution remains statistically significant and largely unchanged.

Since calls are randomly routed to each location, we should not expect to see significant differences by location. Reassuringly, Table 6 suggests qualitatively similar results: no effect of pollution on labor supply, and a negative relationship between pollution and productivity. While the point estimates on productivity appear slightly larger for the Nantong sample, they remain statistically indistinguishable from those in Shanghai, providing additional support for our pooling strategy.

¹⁶Note that the increase in standard errors for the analysis on this subset of workers is likely due to a combination of the much smaller sample size and an increase in classical measurement error. Given the long commutes of many of the workers, their amount of pollution exposure may be measured with more error (see Bloom et al. 2015 for details regarding the characteristics of the workers in the Working From Home experiment)

¹⁷Including worker fixed effects does not meaningfully affect the results (Appendix Table A1).

TABLE 6—EFFECT OF POLLUTION IN OTHER CITIES

Dependent variable:	Number of calls		Minutes logged in	
	(1)	(2)	(3)	(4)
API/10	−0.0032 [0.0015]	−0.0030 [0.0012]	−0.0023 [0.0012]	−0.0022 [0.0009]
Other city's API	0.0003 [0.0015]		0.0006 [0.0010]	
Beijing API		−0.0009 [0.0013]		−0.0011 [0.0008]
Temperature	0.0036 [0.0032]	0.0025 [0.0025]	0.0035 [0.0027]	0.0041 [0.0020]
Temperature squared/1,000	−0.0289 [0.0264]	−0.0072 [0.0182]	−0.0196 [0.0214]	−0.0232 [0.0137]
R^2	0.541	0.592	0.230	0.238
Observations	292,174	359,013	292,174	359,013

Notes: The logarithm of the indicated dependent variable is the outcome of interest. Standard errors in brackets are clustered on date and worker. The sample consists of worker-day observations in both the Shanghai and Nantong offices. All regressions include year-month-specific fixed effects, worker-specific fixed effects, and a control for the day of the week. “Other city’s API” refers to Nantong API for Shanghai workers and Shanghai API for Nantong workers.

TABLE 7—RESULTS SEPARATELY BY CITY

	(1)	(2)	(3)	(4)	(5)	(6)
Dependent variable:	Worked	Hours	Calls	Minutes logged	Calls	Minutes logged
Baseline specification	✓	✓	✓	✓		
Time-series specification					✓	✓
<i>Panel A. Shanghai</i>						
API/10	−0.0004 [0.0005]	−0.0069 [0.0046]	−0.0026 [0.0004]	−0.0010 [0.0004]	−0.0021 [0.0007]	−0.0007 [0.0004]
R^2	0.043	0.051	0.236	0.040	0.378	0.488
Observations	171,978	34,511	112,678	112,678	589	589
<i>Panel B. Nantong</i>						
API/10	0.0001 [0.0016]	0.0024 [0.0065]	−0.0041 [0.0022]	−0.0038 [0.0017]	−0.0022 [0.0016]	−0.0024 [0.0010]
R^2	0.025	0.041	0.085	0.079	0.679	0.914
Observations	356,023	137,202	246,335	246,335	189	189

Notes: Column 1 presents linear probability models; in columns 2 through 4, the logarithm of the indicated dependent variable is the outcome of interest. Standard errors in brackets are clustered on date and worker. All regressions include year-month-specific fixed effects and a control for the day of the week. The baseline specification is one in which every observation is a worker-day; the time-series specification consists of one cell mean for each city-day.

Table 7 repeats our core analysis separately by city.¹⁸ Since calls are randomly routed to each location, we should not expect to see significant differences by

¹⁸ Including worker fixed effects does not meaningfully change the results (Appendix Table A2).

TABLE 8—ROBUSTNESS TESTS

	Baseline results (1)	No temperature controls (2)	Flexible temperature controls (3)	Shanghai baseline results (4)	Shanghai with precipitation controls (5)
<i>Panel A. Dependent variable: Logarithm of number of calls</i>					
API/10	-0.0035 [0.0013]	-0.0035 [0.0013]	-0.0033 [0.0013]	-0.0026 [0.0004]	-0.0027 [0.0004]
R^2	0.136	0.136	0.136	0.236	0.236
Observations	359,013	359,013	359,013	112,678	112,678
<i>Panel B. Dependent variable: Logarithm of minutes logged in</i>					
API/10	-0.0025 [0.0010]	-0.0023 [0.0010]	-0.0023 [0.0010]	-0.0010 [0.0004]	-0.0010 [0.0005]
R^2	0.087	0.087	0.088	0.040	0.041
Observations	359,013	359,013	359,013	112,678	112,678

Notes: Standard errors in brackets are clustered on date and worker. The sample consists of worker-day observations in both the Shanghai and Nantong offices. All regressions include year-month-specific fixed effects and a control for the day of the week. Regressions presented in columns 1, 4, and 5 include controls for temperature and squared temperature; the regression presented in column 3 includes 6 indicator functions for temperature ranges below 40 degrees, 40 to 50 degrees, 50 to 60 degrees, 60 to 70 degrees, 70 to 80 degrees, and above 80 degrees (all in Fahrenheit).

location. Reassuringly, Table 7 suggests qualitatively similar results: no effect of pollution on labor supply, and a negative relationship between pollution and productivity. While the point estimates on productivity appear slightly larger for the Nantong sample, they remain statistically indistinguishable from those in Shanghai, providing additional support for our pooling strategy.

Finally, in Table 8, we further explore the impact of meteorology on our baseline results, shown in column 1. In column 2, we present results that do not control for temperature, while in column 3 we show results that replace the quadratic in temperature with indicator functions for temperature ranges (Fahrenheit) below 40 degrees, 40 to 50 degrees, 50 to 60 degrees, 60 to 70 degrees, 70 to 80 degrees, and above 80 degrees. Columns 4 and 5 of Table 8 repeat this exercise, but focus on precipitation. Unfortunately, such data are only available for Shanghai, so we only show results focusing on workers in that city. As with outdoor temperature, excluding controls for precipitation (column 4) yields nearly identical results to including it (column 5). Together, these results suggest that, as expected, outdoor climatic conditions do not affect workers in an indoor, climate-controlled environment.

V. Conclusion

In this paper, we analyze the relationship between air pollution and the productivity of individual workers at a large call center in China. We find that a 10-unit increase in the air pollution index decreases the number of daily calls handled by a worker by 0.35 percent. Our analysis also suggests that these productivity losses are largely linearly increasing in pollution levels. To our knowledge, this is the first evidence that the negative impacts of pollution on worker productivity extend to labor markets beyond those centered on physically demanding labor.

To place these results in context, it is instructive to compare them to estimates found in prior research that focused on other economic sectors. The estimates from column 1 of Table 3 imply an elasticity of 0.023. He, Liu, and Salvo (2016) studies Chinese textile factories and finds much smaller elasticities—0.0025 for $PM_{2.5}$ and 0.005 for SO_2 —which are indistinguishable from zero. In contrast, Adhvaryu, Kala, and Nyshadham (2014) finds an elasticity of 0.052 for garment factory workers in India, or more than double our estimate. Prior work in the United States has found an elasticity of 0.08 for manufacturing (Chang et al. 2016) and 0.26 for outdoor agricultural work (Graff Zivin and Neidell 2012), both significantly larger than what we find here. Several factors likely contribute to these differences in magnitude. First, the studies examine different pollutants, which generate productivity effects through distinct biological mechanisms. Second, the physical demands of each occupation vary, and laboratory evidence indicates that increased respiratory rates associated with physical activity can exacerbate the effects of pollution (Lippmann et al. 2003). Finally, measurement error may also play an important role. With the exception of Adhvaryu, Kala, and Nyshadham (2014), none of the papers have a direct measure of pollution at the work site, but instead rely on data from outdoor pollution monitoring stations or satellite data that vary in their spatial resolution and proximity to the work site. As such, understanding the scope of applicability of these results is an important area for future research.

While our point estimates are generally smaller than those for other sectors, the impacts for China and other rapidly industrializing countries with sizable service sectors and persistent pollution problems are profound. That statistically significant effects emerge in some dimensions when the API exceeds 100 and for all outcome measures at an API of 150 suggests that this may not simply be an issue for the world's most polluted cities, since such levels obtain with some frequency in urban environments around the world. Given the size of the service and knowledge sectors in the developed world, and the relatively high levels of labor productivity within them, even very small impacts from pollution could aggregate to rather substantial economic damages.¹⁹ As such, understanding the scope of applicability of these results is an important area for future research.

While call center work is mental rather than physical work, it is important to emphasize that it remains a semiskilled occupation. If our measured productivity impacts are the result of diminished cognitive function, the negative impacts of pollution may well be larger for high-skilled occupations that form the backbone of the service and information economy. The development of suitable measures of productivity in those occupations and assessing its relationship with environmental quality represents a fruitful area for future research.

¹⁹ A simple back-of-the-envelope calculation may be useful to get a sense of the potential scale of the overall impact. The coefficient from our simple linear specification in column 1 of Table 3 implies that a 10-unit change in the API translates into a 0.35 percent change in daily productivity. Under the very strong simplifying assumption that this effect applies to all service sector workers in China, an across the board 10-unit reduction in national pollution levels would increase the monetized value of worker productivity by more than \$2.2 billion per year in US dollars. In the United States, Los Angeles, California, experienced 90 days in 2014 where the air quality index exceeded the EPA standard. If all of those days were brought into regulatory compliance, service sector productivity in the county of Los Angeles would have been \$374 million larger.

APPENDIX

TABLE A1—WORKING FROM HOME TABLE WITH FIXED EFFECTS

Location	Number of calls		Minutes logged in	
	Work (1)	Home (2)	Work (3)	Home (4)
API/10	-0.0056 [0.0011]	-0.0031 [0.0012]	-0.0023 [0.0009]	-0.0005 [0.0008]
Temperature	0.0078 [0.0041]	0.0039 [0.0037]	0.0003 [0.0018]	-0.0029 [0.0021]
Temperature squared/1,000	-0.0309 [0.0301]	-0.0144 [0.0250]	-0.0056 [0.0135]	0.0199 [0.0149]
R^2	0.071	0.034	0.013	0.007
Observations	11,897	14,886	11,892	14,800

Notes: The logarithm of the indicated dependent variable is the outcome of interest. Standard errors in brackets are clustered on date and worker. The sample consists of worker-day observations in both the Shanghai and Nantong offices. All regressions include year-month-specific fixed effects, a control for the day of the week, and a worker-specific fixed effect.

TABLE A2—RESULTS SEPARATELY BY CITY, WORKER-SPECIFIC FIXED EFFECTS ADDED

Dependent variable:	Worked (1)	Hours (2)	Calls (3)	Minutes logged (4)
<i>Panel A. Shanghai</i>				
API/10	-0.0003 [0.0005]	-0.0074 [0.0045]	-0.0020 [0.0007]	-0.0010 [0.0004]
R^2	0.086	0.162	0.484	0.222
Observations	171,978	34,511	112,678	112,678
<i>Panel B. Nantong</i>				
API/10	-0.0000 [0.0016]	0.0020 [0.0063]	-0.0037 [0.0021]	-0.0031 [0.0016]
R^2	0.069	0.102	0.780	0.246
Observations	356,023	137,202	246,335	246,335

Notes: Column 1 presents linear probability models; in columns 2 through 4, the logarithm of the indicated dependent variable is the outcome of interest. Standard errors in brackets are clustered on date and worker. All regressions include year-month-specific fixed effects and a control for the day of the week.

REFERENCES

- Adhvaryu, Achyuta, Namrata Kala, and Anant Nyshadham. 2016. "Management and Shocks to Worker Productivity." International Growth Centre (IGC) Working Paper F-35143-INC-1.
- Archsmith, James, Anthony Heyes, and Soodeh Saberian. 2018. "Air Quality and Error Quantity: Pollution and Performance in a High-Skilled, Quality-Focused Occupation." *Journal of the Association of Environmental and Resource Economists* 5 (4): 827–63.
- Auchincloss, Amy H., Ana V. Diez Roux, J. Timothy Dvornch, Patrick L. Brown, R. Graham Barr, Martha L. Daviglius, David C. Goff, Jr., et al. 2008. "Associations between Recent Exposure to Ambient Fine Particulate Matter and Blood Pressure in the Multi-Ethnic Study of Atherosclerosis (MESA)." *Environmental Health Perspectives* 116 (4): 486–91.

- Bloom, Nicholas, James Liang, John Roberts, and Zhichun Jenny Ying.** 2015. "Does Working from Home Work? Evidence from a Chinese Experiment." *Quarterly Journal of Economics* 130 (1): 165–218.
- Cameron, A. Colin, Jonah Gelbach, and Douglas L. Miller.** 2011. "Robust Inference With Multiway Clustering." *Journal of Business and Economic Statistics* 29 (2): 238–49.
- Chang, Tom, Joshua S. Graff Zivin, Tal Gross, and Matthew J. Neidell.** 2016. "Particulate Pollution and the Productivity of Pear Packers." *American Economic Journal: Economic Policy* 8 (3): 141–69.
- Chang, Tom Y., Joshua Graff Zivin, Tal Gross, and Matthew Neidell.** 2019. "The Effect of Pollution and Labor Productivity: Evidence from Industrial Towns in China: Dataset." <https://doi.org/10.1257/app.20160436>.
- Ebenstein, Avraham, Victor Lavy, and Sefi Roth.** 2016. "The Long-Run Economic Consequences of High-Stakes Examinations: Evidence from Transitory Variation in Pollution." *American Economic Journal: Applied Economics* 8 (4): 36–65.
- Environmental Protection Agency.** 2004. *Air Quality Criteria for Particulate Matter*. National Center for Environmental Assessment. Research Triangle Park, NC, October.
- Fenger, Jes.** 1999. "Urban air quality." *Atmospheric Environment* 33 (29): 4877–4900.
- Fu, Shihe, V. Brian Viard, and Peng Zhang.** 2017. "Air Quality and Manufacturing Firm Productivity: Comprehensive Evidence from China." https://mpr.ub.uni-muenchen.de/78914/1/MPRA_paper_78914.pdf.
- Ghanem, Dalia, and Junjie Zhang.** 2014. "'Effortless Perfection': Do Chinese cities manipulate air pollution data?" *Journal of Environmental Economics and Management* 68 (2): 203–25.
- Ghio, Andrew, Chong Kim, and Robert Devlin.** 2000. "Concentrated Ambient Air Particles Induce Mild Pulmonary Inflammation in Healthy Human Volunteers." *American Journal of Respiratory and Critical Care Medicine* 162 (3): 981–88.
- Graff Zivin, Joshua, and Matthew Neidell.** 2012. "The Impact of Pollution on Worker Productivity." *American Economic Review* 102 (7): 3652–73.
- Hanna, Rema, and Paulina Oliva.** 2015. "The effect of pollution on labor supply: Evidence from a natural experiment in Mexico City." *Journal of Public Economics* 122: 68–79.
- He, Jiaxiu, Haoming Liu, and Alberto Salvo.** 2016. "Severe Air Pollution and Labor Productivity: Evidence from Industrial Towns in China." Institute for the Study of Labor (IZA) Discussion Paper 8916.
- Lippmann, Morton, Mark Frampton, Joel Schwartz, Douglas Dockery, Richard Schlesinger, Petros Koutrakis, John Froines, et al.** 2003. "The U.S. Environmental Protection Agency Particulate Matter Health Effects Research Centers Program: A Midcourse Report of Status, Progress, and Plans." *Environmental Health Perspectives* 111 (8): 1074–92.
- Oberdörster, G., Z. Sharp, V. Atudorei, A. Elder, R. Gelein, W. Kreyling, and C. Cox.** 2004. "Translocation of Inhaled Ultrafine Particles to the Brain." *Inhalation Toxicology* 16 (6–7): 437–45.
- Ozkaynak, H., J. Xue, J. Spengler, L. Wallace, E. Pellizzari, and P. Jenkins.** 1996. "Personal exposure to airborne particles and metals: Results from the Particle TEAM study in Riverside, California." *Journal of Exposure Analysis and Environmental Epidemiology* 6 (1): 57–78.
- Peters, Annette, Bellina Veronesi, Lilian Calderón-Garcidueñas, Peter Gehr, Lung Chi Chen, Mari- anne Geiser, and William Reed, et al.** 2006. "Translocation and potential neurological effects of fine and ultrafine particles a critical update." *Particle and Fibre Toxicology* 3 (13): 1–13.
- Power, Melinda C., Marc G. Weisskopf, Stacey E. Alexeff, Brent A. Coull, Avron Spiro III, and Joel Schwartz.** 2011. "Traffic-Related Air Pollution and Cognitive Function in a Cohort of Older Men." *Environmental Health Perspectives* 119 (5): 682–87.
- Seaton, A., W. MacNee, K. Donaldson, and D. Godden.** 1995. "Particulate air pollution and acute health effects." *Lancet* 345 (8943): 176–78.
- Suglia, Shakira, Alexandros Gryparis, R. O. Wright, Joel Schwartz, and Rosalind Wright.** 2008. "Association of Black Carbon with Cognition among Children in a Prospective Birth Cohort Study." *American Journal of Epidemiology* 167 (3): 280–86.
- Thatcher, Tracy L., and David W. Layton.** 1995. "Deposition, resuspension, and penetration of particles within a residence." *Atmospheric Environment* 29 (13): 1487–97.
- Vette, Alan F., Anne W. Rea, Philip A. Lawless, Charles E. Rodes, Gary Evans, V. Ross Highsmith, and Linda Sheldon.** 2001. "Characterization of Indoor-Outdoor Aerosol Concentration Relationships during the Fresno PM Exposure Studies." *Aerosol Science and Technology* 34 (1): 118–26.
- Weuve, Jennifer, Robin Puett, Joel Schwartz, Jeff Yanosky, Francine Laden, and Francine Grodstein.** 2012. "Exposure to Particulate Air Pollution and Cognitive Decline in Older Women." *Archives of Internal Medicine* 172 (3): 219–27.

This article has been cited by:

1. Mingying Zhu, Yifan Kang, Juan Liu. 2023. Caring about the polluted attention: evidence from the inconsistent response existing in web-based survey. *Economic Research-Ekonomska Istraživanja* **36**:1, 2045-2070. [[Crossref](#)]
2. Jodie R. Gawryluk, Daniela J. Palombo, Jason Curran, Ashleigh Parker, Chris Carlsten. 2023. Brief diesel exhaust exposure acutely impairs functional brain connectivity in humans: a randomized controlled crossover study. *Environmental Health* **22**:1. . [[Crossref](#)]
3. Meng Li, Shaojie Zhou. 2023. Pollutive cooking fuels and rural labor supply: Evidence from a large-scale population census in China. *Energy Policy* **183**, 113780. [[Crossref](#)]
4. Ines Helm, Nicolas Koch, Alexander Rohlf. 2023. The effects of cash for clunkers on local air quality. *Journal of Urban Economics* **138**, 103576. [[Crossref](#)]
5. Eren Aydin, Kathleen Kürschner Rauck. 2023. Low-emission zones, modes of transport and house prices: evidence from Berlin's commuter belt. *Transportation* **50**:5, 1847-1895. [[Crossref](#)]
6. Luis Sarmiento, Adam Nowakowski. 2023. Court Decisions and Air Pollution: Evidence from Ten Million Penal Cases in India. *Environmental and Resource Economics* **14**. . [[Crossref](#)]
7. Nikolai Cook, Anthony Heyes, Nicholas Rivers. 2023. Clean Air and Cognitive Productivity: Effect and Adaptation. *Journal of the Association of Environmental and Resource Economists* **10**:5, 1265-1308. [[Crossref](#)]
8. Ying Hao, Lixin Huang, Yuxiu Huang, Zi Wei. 2023. Air quality and CEO cross-regional turnover —The role of compensation or incentive. *Pacific-Basin Finance Journal* **80**, 102094. [[Crossref](#)]
9. Mingxuan Fan, Corbett Grainger. 2023. The Impact of Air Pollution on Labor Supply in China. *Sustainability* **15**:17, 13082. [[Crossref](#)]
10. Yeguang Chi, Jingbin He, Xinru Ma, Fei Wu. 2023. Air pollution and institutional investors' valuation bias during initial public offerings. *Pacific-Basin Finance Journal* **80**, 102096. [[Crossref](#)]
11. Tao Zhou, Ning Zhang. 2023. Does air pollution decrease labor share? Evidence from China. *Global Environmental Change* **82**, 102706. [[Crossref](#)]
12. Jingnan Chen, Miguel A. Fonseca, Anthony Heyes, Jie Yang, Xiaohui Zhang. 2023. How Much Will Climate Change Reduce Productivity in a High-Technology Supply Chain? Evidence from Silicon Wafer Manufacturing. *Environmental and Resource Economics* **33**. . [[Crossref](#)]
13. Pengqing Zhang. 2023. Pollution control, worker productivity, and wage inequality. *The Annals of Regional Science* **130**. . [[Crossref](#)]
14. Songlei Chao, Chengfeng Huang, Wenxuan Chen. 2023. The impact of air pollution on startups and structural transformation: Evidence from newly registered enterprises in China. *Journal of Cleaner Production* **130**, 138537. [[Crossref](#)]
15. Maoyong Fan, Hanchen Jiang, Maigeng Zhou. 2023. Beyond particulate matter: New evidence on the causal effects of air pollution on mortality. *Journal of Health Economics* **11**, 102799. [[Crossref](#)]
16. Ying-Ying Meng, Yu Yu, Mohammad Z. Al-Hamdan, Miriam E. Marlier, Joseph L. Wilkins, Diane Garcia-Gonzales, Xiao Chen, Michael Jerrett. 2023. Short-Term total and wildfire fine particulate matter exposure and work loss in California. *Environment International* **178**, 108045. [[Crossref](#)]
17. Jun Lu, Fanglin Chen, Siyuan Cai. 2023. Air pollution monitoring and avoidance behavior: Evidence from the health insurance market. *Journal of Cleaner Production* **414**, 137780. [[Crossref](#)]

18. Yunming Kuang, Ruipeng Tan, Zihan Zhang. 2023. Saving energy by cleaning the air?: Endogenous energy efficiency and energy conservation potential. *Energy Economics* **130**, 106946. [[Crossref](#)]
19. Baoxi Li, Tiantian Gui, Guo Chen, Shixiong Cheng. 2023. The effect of environmental regulation on population migration: Evidence from China's new ambient air quality standards. *Journal of Cleaner Production* **415**, 137786. [[Crossref](#)]
20. Mengna Luan, Zhigang Tao, Hongjie Yuan. 2023. Alive but not well: The neglected cost of air pollution. *Health Economics* . [[Crossref](#)]
21. Yunming Kuang, Boqiang Lin. 2023. Unwatched pollution reduction: The effect of natural gas utilization on air quality. *Energy* **273**, 127247. [[Crossref](#)]
22. Quan-Hoang Vuong, Tam-Tri Le, Viet-Phuong La, Thu-Trang Vuong, Minh-Hoang Nguyen. 2023. Investigation into the Rationale of Migration Intention Due to Air Pollution Integrating the Homo Oeconomicus Traits. *Urban Science* **7**:2, 59. [[Crossref](#)]
23. Clément S. Bellet, Jan-Emmanuel De Neve, George Ward. 2023. Does Employee Happiness Have an Impact on Productivity?. *Management Science* **127**. . [[Crossref](#)]
24. Zhenyu Yao, Wei Zhang, Xinde Ji, Weizhe Weng. 2023. Short-Term Exposure to Air Pollution and Cognitive Performance: New Evidence from China's College English Test. *Environmental and Resource Economics* **85**:1, 211-237. [[Crossref](#)]
25. Benjamin A. Jones. 2023. Can invasive species lead to sedentary behavior? The time use and obesity impacts of a forest-attacking pest. *Journal of Environmental Economics and Management* **119**, 102800. [[Crossref](#)]
26. Wenli Ni, Xiurong Hu, Yi Ju, Qunwei Wang. 2023. Air pollution and indoor work efficiency: Evidence from professional basketball players in China. *Journal of Cleaner Production* **399**, 136644. [[Crossref](#)]
27. Hanwen Chen, Siyi Liu, Xin Liu, Jiani Wang. 2023. Local air pollution and corporate innovation. *Applied Economics Letters* 1-16. [[Crossref](#)]
28. Xinming Du, Jun Rentschler, Jason Russ. People's Unequal Exposure to Air Pollution: Evidence for the World's Coal-Fired Power Plants **65**, . [[Crossref](#)]
29. Tingting Xiao, Zhong Liu. 2023. Air Pollution and Enterprise Energy Efficiency: Evidence from Energy-Intensive Manufacturing Industries in China. *Sustainability* **15**:7, 6311. [[Crossref](#)]
30. Rachana Kalelkar, Qiao Xu, Lele Chen. 2023. Seasonal affective disorder and audit quality. *International Journal of Auditing* **27**:2-3, 109-129. [[Crossref](#)]
31. Jiayu Zhou, Hong Wang, Gesche Huebner, Yu Zeng, Zhichao Pei, Marcella Ucci. 2023. Short-term exposure to indoor PM2.5 in office buildings and cognitive performance in adults: An intervention study. *Building and Environment* **233**, 110078. [[Crossref](#)]
32. Zhang Cheng, Juanjuan Zhang. 2023. The impact of air quality on industrial intelligence: evidence from Chinese industrial firms. *Journal of Environmental Planning and Management* 1-22. [[Crossref](#)]
33. Laure de Preux, Dheeya Rizmie, Daniela Fecht, John Gulliver, Weiyi Wang. 2023. Does It Measure Up? A Comparison of Pollution Exposure Assessment Techniques Applied across Hospitals in England. *International Journal of Environmental Research and Public Health* **20**:5, 3852. [[Crossref](#)]
34. Yau-Huo Shr, Wen Hsu, Bing-Fang Hwang, Chau-Ren Jung. 2023. Air quality and risky behaviors on roads. *Journal of Environmental Economics and Management* **118**, 102786. [[Crossref](#)]

35. Paul M. Lohmann, Elisabeth Gsottbauer, Jing You, Andreas Kontoleon. 2023. Air pollution and anti-social behaviour: Evidence from a randomised lab-in-the-field experiment. *Social Science & Medicine* **320**, 115617. [[Crossref](#)]
36. Susobhan Maiti, Chandrima Chakraborty. Does Air Pollution Affect Labour Productivity in Indian Manufacturing? Evidence from State-level Data 183-194. [[Crossref](#)]
37. Kaihua Wang. 2023. Is air pollution politics or economics? Evidence from industrial heterogeneity. *Environmental Science and Pollution Research* **30**:9, 24454-24469. [[Crossref](#)]
38. Xuan Leng, Xuemei Zhao, Houjian Li. 2023. Assessing the effect of the coal-to-gas program on air pollution: evidence from China. *Environmental Science and Pollution Research* **30**:9, 24027-24042. [[Crossref](#)]
39. Steffen Künn, Juan Palacios, Nico Pestel. 2023. Indoor Air Quality and Strategic Decision Making. *Management Science* **4**. . [[Crossref](#)]
40. Yalin Yang, Xing Ji, Liqian Deng, Rufei Ma. 2023. How does a good environment affect firms' productivity? evidence from urban public green spaces in China. *Frontiers in Energy Research* **10**. . [[Crossref](#)]
41. Wenliang Tang, Xue Yang. 2023. Is environmental tax legislation effective for pollution abatement in emerging economies? Evidence from China. *Frontiers in Environmental Science* **10**. . [[Crossref](#)]
42. Uttara Balakrishnan, Magda Tsaneva. 2023. Impact of Air Pollution on Mental Health in India. *The Journal of Development Studies* **59**:1, 133-147. [[Crossref](#)]
43. Anant Sudarshan. Monitoring Industrial Pollution in India 161-182. [[Crossref](#)]
44. Salma El Bied, Maria Victoria de-la-Fuente-Aragon, Lorenzo Ros-McDonnell, Diego Ros-McDonnell. Urban Ecosystem Sustainability Impacts of Air Quality 225-232. [[Crossref](#)]
45. Qingran Li, Yang Zhou, William A. Pizer, Libo Wu. 2023. The unbalanced trade-off between pollution exposure and energy consumption induced by averting behaviors. *iScience* **26**:1, 105597. [[Crossref](#)]
46. Caiqi Bu, Kaixia Zhang. 2022. Air pollution and corporate innovation: incentive or resistance? Evidence from regression discontinuity. *Environmental Science and Pollution Research* **29**:56, 84741-84761. [[Crossref](#)]
47. Tian Gan, Yumin Li, Yan Jiang. 2022. The impact of air pollution on venture capital: evidence from China. *Environmental Science and Pollution Research* **29**:60, 90615-90631. [[Crossref](#)]
48. Wenliang Tang, Mian Yang, Hongbo Duan. 2022. Temperature and corporate tax avoidance: Evidence from Chinese manufacturing firms. *Energy Economics* **60**, 106486. [[Crossref](#)]
49. He Xiao. 2022. How does air pollution affect corporate information environment?. *Journal of Financial Research* **45**:4, 987-1016. [[Crossref](#)]
50. Dong Le, Yusong Li, Fei Ren. 2022. Does air quality improvement promote enterprise productivity increase? Based on the spatial spillover effect of 242 cities in China. *Frontiers in Public Health* **10**. . [[Crossref](#)]
51. Charl Jooste, Ted Loch-Temzelides, James Sampi, Hasan Dudu. Pollution and Labor Productivity: Evidence from Chilean Cities **2**, . [[Crossref](#)]
52. Jeff Wen, Marshall Burke. 2022. Lower test scores from wildfire smoke exposure. *Nature Sustainability* **5**:11, 947-955. [[Crossref](#)]
53. Yi Shen, Minghan Lyu, Jiali Zhu. 2022. Air Pollution and Corporate Green Financial Constraints: Evidence from China's Listed Companies. *International Journal of Environmental Research and Public Health* **19**:22, 15034. [[Crossref](#)]

54. Mohammad Aldekheel, Abdulmalik Altuwayjiri, Ramin Tohidi, Vahid Jalali Farahani, Constantinos Sioutas. 2022. The Role of Portable Air Purifiers and Effective Ventilation in Improving Indoor Air Quality in University Classrooms. *International Journal of Environmental Research and Public Health* **19**:21, 14558. [[Crossref](#)]
55. Sandra Aguilar-Gomez, Holt Dwyer, Joshua Graff Zivin, Matthew Neidell. 2022. This Is Air: The “Nonhealth” Effects of Air Pollution. *Annual Review of Resource Economics* **14**:1, 403-425. [[Crossref](#)]
56. Quan-Hoang Vuong, Tam-Tri Le, Quy Van Khuc, Quang-Loc Nguyen, Minh-Hoang Nguyen. 2022. Escaping from Air Pollution: Exploring the Psychological Mechanism behind the Emergence of Internal Migration Intention among Urban Residents. *International Journal of Environmental Research and Public Health* **19**:19, 12233. [[Crossref](#)]
57. Fei Ren, Yuke Zhu, Dong Le. 2022. The Spatial Effect of Air Pollution Governance on Labor Productivity: Evidence from 262 Chinese Cities. *International Journal of Environmental Research and Public Health* **19**:20, 13694. [[Crossref](#)]
58. Liwen Liu, Caiquan Bai. 2022. Environmental Regulation and Economic Development: Evidence from the River Chief System in China. *Water Economics and Policy* **08**:04. . [[Crossref](#)]
59. Muhammad Waseem Bari, Shaham Saleem, Mohsin Bashir, Bashir Ahmad. 2022. Impact of ambient air pollution on outdoor employees’ performance: Mediating role of anxiety. *Frontiers in Psychology* **13**. . [[Crossref](#)]
60. Lan-Ye Wei, Zhao Liu. 2022. Air pollution and innovation performance of Chinese cities: human capital and labour cost perspective. *Environmental Science and Pollution Research* **29**:45, 67997-68015. [[Crossref](#)]
61. Rui Zhao, Dawei Liang, Yukun Pan, Qianqian Du. 2022. Air Pollution and Employee Protection: The Moderating Effect of Public Attention and Environmental Regulations. *Sustainability* **14**:18, 11529. [[Crossref](#)]
62. Yao Yao, Xue Li, Russell Smyth, Lin Zhang. 2022. Air pollution and political trust in local government: Evidence from China. *Journal of Environmental Economics and Management* **115**, 102724. [[Crossref](#)]
63. Guilherme de Oliveira, Gilberto Tadeu Lima. 2022. Economic growth as a double-edged sword: The pollution-adjusted Kaldor-Verdoorn effect. *Ecological Economics* **199**, 107449. [[Crossref](#)]
64. Sisay Demissew Beyene. 2022. Human activities and environmental quality: evidence beyond the conventional EKC hypothesis. *Heliyon* **8**:9, e10756. [[Crossref](#)]
65. Latife Ceyda İRKİN, Şamil ÖZTÜRK, Ruhay ALDIK. 2022. Çanakkale Boğazındaki İstavritin (Trachurus trachurus, Linnaeus, 1758) Kas Dokusunun Histopatolojik Değerlendirilmesi. *Acta Aequatica Turcica* **18**:3, 303-313. [[Crossref](#)]
66. Nan Hu, Xingnan Xue, Ling Liu. 2022. The impact of air pollution on financial reporting quality: evidence from China. *Accounting & Finance* **62**:3, 3609-3644. [[Crossref](#)]
67. Wenjing Ma, Kai Liu, Yunlong Li, Huarong Zhang. 2022. The impact of FDI quality characteristics on carbon emission intensity: Evidence from China. *Frontiers in Environmental Science* **10**. . [[Crossref](#)]
68. Xinjie Wang, Ge Wu, Zhiqiang Xiang, Jianyu Zhang. 2022. Air Pollution and Media Slant: Evidence from Chinese Corporate News. *Emerging Markets Finance and Trade* **58**:10, 2880-2894. [[Crossref](#)]

69. Melissa E. King, Chuntao Wang, Maria V. Fonseca Guzman, Michael B. Ross. 2022. Plasmonics for environmental remediation and pollutant degradation. *Chem Catalysis* 2:8, 1880-1892. [[Crossref](#)]
70. Gloria Oiyahumen Anetor, Nnenna Linda Nwobi, Godwin Osaretin Igharo, Oyebola Oluwagbemiga Sonuga, John Ibhagbemien Anetor. 2022. Environmental Pollutants and Oxidative Stress in Terrestrial and Aquatic Organisms: Examination of the Total Picture and Implications for Human Health. *Frontiers in Physiology* 13. . [[Crossref](#)]
71. Amina Maharjan, Sagar Adhikari, Rida Ahmad, Usman Ahmad, Zulfiqar Ali, Sugat Bajracharya, Jeevan Baniya, Sadikshya Bhattacharai, Amit Gautam, Elisabeth Gilmore, Hein Min Ko, Nilar Myat, Theingi Myint, Parth Sarathi Mahapatra, Arabinda Mishra, Chandni Singh. 2022. Air pollution exposure and its impacts on everyday life and livelihoods of vulnerable urban populations in South Asia. *Environmental Research Communications* 4:7, 071002. [[Crossref](#)]
72. Tao Lin, Wenhao Qian, Hongwei Wang, Yu Feng. 2022. Air Pollution and Workplace Choice: Evidence from China. *International Journal of Environmental Research and Public Health* 19:14, 8732. [[Crossref](#)]
73. Nikolai Cook, Anthony Heyes. 2022. Pollution pictures: Psychological exposure to pollution impacts worker productivity in a large-scale field experiment. *Journal of Environmental Economics and Management* 114, 102691. [[Crossref](#)]
74. Wei Feng, Hang Yuan. 2022. The pain of breathing: how does haze pollution affect urban innovation?. *Environmental Science and Pollution Research* 29:28, 42664-42677. [[Crossref](#)]
75. Mian Yang, Wenliang Tang. 2022. Air pollution, political costs, and earnings management. *Emerging Markets Review* 51, 100867. [[Crossref](#)]
76. Fubiao Zhu, Delin Zhuang, Shengwu Jin, Lingling Gao, Rui Chen. 2022. Effects of air pollution on regional innovation and the mediator role of health: Evidence from China. *Growth and Change* 53:2, 628-650. [[Crossref](#)]
77. Zhonghua Huang, Xuejun Du. 2022. Does air pollution affect investor cognition and land valuation? Evidence from the Chinese land market. *Real Estate Economics* 50:2, 593-613. [[Crossref](#)]
78. Guiyu Qin, Xuyan Wang, Tong Wang, Dewei Nie, Yanbing Li, Yan Liu, Haoyu Wen, Lihong Huang, Chuanhua Yu. 2022. Impact of Particulate Matter on Hospitalizations for Respiratory Diseases and Related Economic Losses in Wuhan, China. *Frontiers in Public Health* 10. . [[Crossref](#)]
79. Marion Leroutier, Philippe Quirion. 2022. Air pollution and CO2 from daily mobility: Who emits and Why? Evidence from Paris. *Energy Economics* 109, 105941. [[Crossref](#)]
80. Xue Yang, Wenliang Tang. 2022. Climate change and regional inequality: The effect of high temperatures on fiscal stress. *Urban Climate* 43, 101167. [[Crossref](#)]
81. Yu Qin, Jing Wu, Rongjie Zhang. 2022. Can Professional Football Players Adapt to Air Pollution? Evidence From China. *Journal of Sports Economics* 23:3, 277-300. [[Crossref](#)]
82. I. Alameddine, K. Gebrael, F. Hanna, M. El-Fadel. 2022. Quantifying indoor PM2.5 levels and its sources in schools: What role does location, chalk use, and socioeconomic equity play ?. *Atmospheric Pollution Research* 13:4, 101375. [[Crossref](#)]
83. Massimo Filippini, Suchita Srinivasan. 2022. Investments in worker health and production: Evidence from Vietnam. *Economics of Transition and Institutional Change* 30:2, 211-235. [[Crossref](#)]

84. Yu Shen, Wenkai Sun. 2022. Information and avoidance behaviour: the effect of air pollution disclosure on labour supply in China. *International Labour Review* **86**. . [[Crossref](#)]
85. Shuhong Wang, Hanxue Chen, Kedong Yin. 2022. The employment effect of Chinese industrial enterprises embedded in environmental cost-adjusted global value chains. *Environmental Science and Pollution Research* **29**:12, 18160-18176. [[Crossref](#)]
86. Ge Xu, Xiangnan Feng, Yiwei Li, Jianmin Jia. 2022. Mediation effects of online public attention on the relationship between air pollution and precautionary behavior. *Journal of Management Science and Engineering* **7**:1, 159-172. [[Crossref](#)]
87. Chunchao Wang, Qianqian Lin, Yun Qiu. 2022. Productivity loss amid invisible pollution. *Journal of Environmental Economics and Management* **112**, 102638. [[Crossref](#)]
88. Yaru Cao, Qunwei Wang, Dequn Zhou. 2022. Does air pollution inhibit manufacturing productivity in Yangtze River Delta, China? Moderating effects of temperature. *Journal of Environmental Management* **306**, 114492. [[Crossref](#)]
89. Shihe Fu, V. Brian Viard, Peng Zhang. 2022. Trans-boundary air pollution spillovers: Physical transport and economic costs by distance. *Journal of Development Economics* **155**, 102808. [[Crossref](#)]
90. Shiyi Chen, Lingduo Jiang, Wanlin Liu, Hong Song. 2022. Fireworks regulation, air pollution, and public health: Evidence from China. *Regional Science and Urban Economics* **92**, 103722. [[Crossref](#)]
91. Benjamin A. Jones. 2022. Dust storms and violent crime. *Journal of Environmental Economics and Management* **111**, 102590. [[Crossref](#)]
92. Lizheng Wang, Jinyang Zheng, Yongjun Li, Yong Tan. 2022. Is Digital Goods Consumption Resilient to Air Pollution?. *SSRN Electronic Journal* **99**. . [[Crossref](#)]
93. Luis Sarmiento. 2022. Air pollution and the productivity of high-skill labor: evidence from court hearings*. *The Scandinavian Journal of Economics* **124**:1, 301-332. [[Crossref](#)]
94. Lu Liu, Kai-Hua Wang, Yidong Xiao. 2021. How Air Quality Affect Health Industry Stock Returns: New Evidence From the Quantile-on-Quantile Regression. *Frontiers in Public Health* **9**. . [[Crossref](#)]
95. Aloys Prinz, David J. Richter. 2021. Feinstaubbelastung und Lebenserwartung in Deutschland. *AStA Wirtschafts- und Sozialstatistisches Archiv* **15**:3-4, 237-272. [[Crossref](#)]
96. Qi He, Xinde (James) Ji. 2021. The Labor Productivity Consequences of Exposure to Particulate Matters: Evidence from a Chinese National Panel Survey. *International Journal of Environmental Research and Public Health* **18**:23, 12859. [[Crossref](#)]
97. Michelle Marcus. 2021. Pollution at schools and children's aerobic capacity. *Health Economics* **30**:12, 3016-3031. [[Crossref](#)]
98. Baohua Liu, Junfeng Wu, Kam C. Chan. 2021. Does air pollution change a firm's business strategy for employing capital and labor?. *Business Strategy and the Environment* **30**:8, 3671-3685. [[Crossref](#)]
99. Juliana Carneiro, Matthew A. Cole, Eric Strobl. 2021. The Effects of Air Pollution on Students' Cognitive Performance: Evidence from Brazilian University Entrance Tests. *Journal of the Association of Environmental and Resource Economists* **8**:6, 1051-1077. [[Crossref](#)]
100. Evan Herrnstadt, Anthony Heyes, Erich Muehlegger, Soodeh Saberian. 2021. Air Pollution and Criminal Activity: Microgeographic Evidence from Chicago. *American Economic Journal: Applied Economics* **13**:4, 70-100. [[Abstract](#)] [[View PDF article](#)] [[PDF with links](#)]

101. Xiangnan Feng, Shuang Ma, Lingling Wen, Yan Zhao. 2021. Immediate effect of air pollution on labor mobility: empirical evidence from online résumé data. *The Annals of Regional Science* 67:2, 483-512. [[Crossref](#)]
102. Muxin Zhai, Hendrik Wolff. 2021. Air pollution and urban road transport: evidence from the world's largest low-emission zone in London. *Environmental Economics and Policy Studies* 23:4, 721-748. [[Crossref](#)]
103. Samantha Fisher, David C Bellinger, Maureen L Cropper, Pushpam Kumar, Agnes Binagwaho, Juliette Biao Koudoukoupo, Yongjoon Park, Gabriella Taghian, Philip J Landrigan. 2021. Air pollution and development in Africa: impacts on health, the economy, and human capital. *The Lancet Planetary Health* 5:10, e681-e688. [[Crossref](#)]
104. Youxing Huang, Qi Xu, Yanping Zhao. 2021. Short-run pain, long-run gain: Desulfurization investment and productivity. *Energy Economics* 102, 105520. [[Crossref](#)]
105. Li Wang, Yunhao Dai, Dongmin Kong. 2021. Air pollution and employee treatment. *Journal of Corporate Finance* 70, 102067. [[Crossref](#)]
106. Mengxin Wang, Gaoke Liao, Yanling Li. 2021. The Relationship between Environmental Regulation, Pollution and Corporate Environmental Responsibility. *International Journal of Environmental Research and Public Health* 18:15, 8018. [[Crossref](#)]
107. Guangyuan Zhang, Stefan Poslad, Xiaoping Rui, Guangxia Yu, Yonglei Fan, Xianfeng Song, Runkui Li. 2021. Using an Internet of Behaviours to Study How Air Pollution Can Affect People's Activities of Daily Living: A Case Study of Beijing, China. *Sensors* 21:16, 5569. [[Crossref](#)]
108. Daxin Dong, Boyang Xu, Ning Shen, Qian He. 2021. The Adverse Impact of Air Pollution on China's Economic Growth. *Sustainability* 13:16, 9056. [[Crossref](#)]
109. Benjamin A. Jones, Shana McDermott. 2021. The Local Labor Market Impacts of US Megafires. *Sustainability* 13:16, 9078. [[Crossref](#)]
110. Toshiyuki Sueyoshi, Ruchuan Zhang, Jingjing Qu, Aijun Li. 2021. New concepts for environment-health measurement by data envelopment analysis and an application in China. *Journal of Cleaner Production* 312, 127468. [[Crossref](#)]
111. Stefan Bauernschuster, Christian Traxler. 2021. Tempolimit 130 auf Autobahnen: Eine evidenzbasierte Diskussion der Auswirkungen. *Perspektiven der Wirtschaftspolitik* 22:2, 86-102. [[Crossref](#)]
112. Shuai Chen, Dandan Zhang. 2021. Impact of air pollution on labor productivity: Evidence from prison factory data. *China Economic Quarterly International* 1:2, 148-159. [[Crossref](#)]
113. Arjun S. Bedi, Marcos Y. Nakaguma, Brandon J. Restrepo, Matthias Rieger. 2021. Particle Pollution and Cognition: Evidence from Sensitive Cognitive Tests in Brazil. *Journal of the Association of Environmental and Resource Economists* 8:3, 443-474. [[Crossref](#)]
114. Shiqi Guo. 2021. How Does Straw Burning Affect Urban Air Quality in China?. *American Journal of Agricultural Economics* 103:3, 1122-1140. [[Crossref](#)]
115. Maryam Ahmadi, Babak Khorsandi, Mahmoud Mesbah. 2021. The effect of air pollution on drivers' safety performance. *Environmental Science and Pollution Research* 28:13, 15768-15781. [[Crossref](#)]
116. Jindong Wu, Jiantao Weng, Bing Xia, Yujie Zhao, Qiuji Song. 2021. The Synergistic Effect of PM2.5 and CO2 Concentrations on Occupant Satisfaction and Work Productivity in a Meeting Room. *International Journal of Environmental Research and Public Health* 18:8, 4109. [[Crossref](#)]
117. Hung T. Nguyen, Mia Hang Pham. 2021. Air pollution and behavioral biases: Evidence from stock market anomalies. *Journal of Behavioral and Experimental Finance* 29, 100441. [[Crossref](#)]

118. Maureen Cropper, Ryna Cui, Sarath Guttikunda, Nate Hultman, Puja Jawahar, Yongjoon Park, Xinlu Yao, Xiao-Peng Song. 2021. The mortality impacts of current and planned coal-fired power plants in India. *Proceedings of the National Academy of Sciences* **118**:5. . [[Crossref](#)]
119. Junhong Chu, Haoming Liu, Alberto Salvo. 2021. Air pollution as a determinant of food delivery and related plastic waste. *Nature Human Behaviour* **5**:2, 212-220. [[Crossref](#)]
120. Wenquan Liang, Ran Song, Christopher Timmins. The Role of Migration Costs in Residential Sorting 251-283. [[Crossref](#)]
121. Lopamudra Chakraborti, John L. Voorheis. 2021. Are Poorer Mexicans Exposed to Worse Air Quality? Long-Term Evidence from Satellite Imaging Data. *SSRN Electronic Journal* **126**. . [[Crossref](#)]
122. Shaoshuai Li, Jaimie W. Lien, Jia Yuan. 2021. Pollution Motivates Hope-Seeking Behavior. *SSRN Electronic Journal* **99**. . [[Crossref](#)]
123. Soo Keong Yong, Ulrich J. Wagner, Peiyao Shen, Laure de Preux, Mirabelle Muûls, Ralf Martin, Jing Cao. 2021. Management Practices and Climate Policy in China. *SSRN Electronic Journal* **118**. . [[Crossref](#)]
124. Perihan TÜZÜN. 2020. Türk Bankalarında Dijital Bankacılık Uygulamalarının İnsan Kaynakları Stratejileri Kapsamında İşe Alımlar Üzerine Bir Tahmin. *IBAD Sosyal Bilimler Dergisi* 433-452. [[Crossref](#)]
125. Andrew K. Jorgenson, Jared B. Fitzgerald, Ryan P. Thombs, Terrence D. Hill, Jennifer E. Givens, Brett Clark, Juliet B. Schor, Xiaorui Huang, Orla M. Kelly, Peter Ore. 2020. The multiplicative impacts of working hours and fine particulate matter concentration on life expectancy: A longitudinal analysis of US States. *Environmental Research* **191**, 110117. [[Crossref](#)]
126. Guojun He, Yuhang Pan, Takanao Tanaka. 2020. The short-term impacts of COVID-19 lockdown on urban air pollution in China. *Nature Sustainability* **3**:12, 1005-1011. [[Crossref](#)]
127. Jun Yang, Lan Xu. 2020. How does China's air pollution influence its labor wage distortions? Theoretical and empirical analysis from the perspective of spatial spillover effects. *Science of The Total Environment* **745**, 140843. [[Crossref](#)]
128. Benjamin A. Jones. 2020. After the Dust Settles: The Infant Health Impacts of Dust Storms. *Journal of the Association of Environmental and Resource Economists* **7**:6, 1005-1032. [[Crossref](#)]
129. Joshua Graff Zivin, Tong Liu, Yingquan Song, Qu Tang, Peng Zhang. 2020. The unintended impacts of agricultural fires: Human capital in China. *Journal of Development Economics* **147**, 102560. [[Crossref](#)]
130. Bin Li, Shuai Shi, Yating Zeng. 2020. The Impact of Haze Pollution on Firm-Level TFP in China: Test of a Mediation Model of Labor Productivity. *Sustainability* **12**:20, 8446. [[Crossref](#)]
131. Jiekun Huang, Nianhang Xu, Honghai Yu. 2020. Pollution and Performance: Do Investors Make Worse Trades on Hazy Days?. *Management Science* **66**:10, 4455-4476. [[Crossref](#)]
132. Benjamin A. Jones. 2020. Labor Market Impacts of Deforestation Caused by Invasive Species Spread. *Environmental and Resource Economics* **77**:1, 159-190. [[Crossref](#)]
133. Neil Jennings, Daniela Fecht, Sara De Matteis. 2020. Mapping the co-benefits of climate change action to issues of public concern in the UK: a narrative review. *The Lancet Planetary Health* **4**:9, e424-e433. [[Crossref](#)]
134. Matthew E Kahn, Pei Li. 2020. Air pollution lowers high skill public sector worker productivity in China. *Environmental Research Letters* **15**:8, 084003. [[Crossref](#)]

135. Sheng Yao, Yadan Liu. 2020. Air Quality Uncertainty and Earnings Management. *Sustainability* 12:15, 6098. [[Crossref](#)]
136. Alsaid Ahmed Almetwally, May Bin-Jumah, Ahmed A. Allam. 2020. Ambient air pollution and its influence on human health and welfare: an overview. *Environmental Science and Pollution Research* 27:20, 24815-24830. [[Crossref](#)]
137. Olivier Deschenes, Huixia Wang, Si Wang, Peng Zhang. 2020. The effect of air pollution on body weight and obesity: Evidence from China. *Journal of Development Economics* 145, 102461. [[Crossref](#)]
138. Guojun He, Tong Liu, Maigeng Zhou. 2020. Straw burning, PM2.5, and death: Evidence from China. *Journal of Development Economics* 145, 102468. [[Crossref](#)]
139. Jesse Burkhardt, Jude Bayham, Ander Wilson, Jesse D. Berman, Katelyn O'Dell, Bonne Ford, Emily V. Fischer, Jeffrey R. Pierce. 2020. The relationship between monthly air pollution and violent crime across the United States. *Journal of Environmental Economics and Policy* 9:2, 188-205. [[Crossref](#)]
140. Jackson G Lu. 2020. Air pollution: A systematic review of its psychological, economic, and social effects. *Current Opinion in Psychology* 32, 52-65. [[Crossref](#)]
141. Xiao Li, Yutao Wang, Hongchun Zhou, Lei Shi. 2020. Has China's war on pollution reduced employment? Quasi-experimental evidence from the Clean Air Action. *Journal of Environmental Management* 260, 109851. [[Crossref](#)]
142. Yiannis Kountouris. 2020. Ambient PM2.5 influences productive activities in public sector bureaucracies. *Environmental Research Communications* 2:4, 041003. [[Crossref](#)]
143. Meng Li, Liye Dong, Jing Luan, Pengfei Wang. 2020. Do environmental regulations affect investors? Evidence from China's action plan for air pollution prevention. *Journal of Cleaner Production* 244, 118817. [[Crossref](#)]
144. Felix Holub, Laura Hospido, Ulrich J. Wagner. 2020. Urban Air Pollution and Sick Leaves: Evidence from Social Security Data. *SSRN Electronic Journal* 86. . [[Crossref](#)]
145. Hasan Dinçer, Ayşe Mengir. Innovative Call Center Applications Focused on Financial Marketing in the Turkish Banking Sector 145-171. [[Crossref](#)]
146. Luis Sarmiento, Thorsten Burandt, Konstantin Löffler, Pao-Yu Oei. 2019. Analyzing Scenarios for the Integration of Renewable Energy Sources in the Mexican Energy System—An Application of the Global Energy System Model (GENeSYS-MOD). *Energies* 12:17, 3270. [[Crossref](#)]
147. Siyi Liu, Daoguang Yang, Nian Liu, Xin Liu. 2019. The Effects of Air Pollution on Firms' Internal Control Quality: Evidence from China. *Sustainability* 11:18, 5068. [[Crossref](#)]
148. Silke Schmidt. 2019. #####. *Environmental Health Perspectives (Chinese)* 127:3. . [[Crossref](#)]
149. Cong Sun, Siqi Zheng, Jianghao Wang, Matthew E. Kahn. 2019. Does clean air increase the demand for the consumer city? Evidence from Beijing. *Journal of Regional Science* 59:3, 409-434. [[Crossref](#)]
150. Qin, Hong, Jiang, Yan, Zhou. 2019. The Effect of Vegetation Enhancement on Particulate Pollution Reduction: CFD Simulations in an Urban Park. *Forests* 10:5, 373. [[Crossref](#)]
151. Samma Faiz Rasool, Rashid Maqbool, Madeeha Samma, Yan Zhao, Amna Anjum. 2019. Positioning Depression as a Critical Factor in Creating a Toxic Workplace Environment for Diminishing Worker Productivity. *Sustainability* 11:9, 2589. [[Crossref](#)]

152. Silke Schmidt. 2019. Brain Fog: Does Air Pollution Make Us Less Productive?. *Environmental Health Perspectives* **127**:5. . [[Crossref](#)]
153. Anthony Heyes, Soodeh Saberian. 2019. Temperature and Decisions: Evidence from 207,000 Court Cases. *American Economic Journal: Applied Economics* **11**:2, 238-265. [[Abstract](#)] [[View PDF article](#)] [[PDF with links](#)]
154. Panle Jia Barwick, Shanjun Li, Lin Ligu, Eric Zou. 2019. From Fog to Smog: The Value of Pollution Information. *SSRN Electronic Journal* . [[Crossref](#)]
155. Clement Bellet, Jan-Emmanuel De Neve, George Ward. 2019. Does Employee Happiness Have an Impact on Productivity?. *SSRN Electronic Journal* **22**. . [[Crossref](#)]
156. Stevie Olson, Phil Berkaw, Lucien Charland, Elizabeth Patton, Linda Bilmes. 2019. The \$64 Billion Massachusetts Vehicle Economy. *SSRN Electronic Journal* . [[Crossref](#)]