

Why Have College Completion Rates Increased?[†]

By JEFFREY T. DENNING, ERIC R. EIDE, KEVIN J. MUMFORD,
RICHARD W. PATTERSON, AND MERRILL WARNICK*

We document that college completion rates have increased since the 1990s, after declining in the 1970s and 1980s. We find that most of the increase in graduation rates can be explained by grade inflation and that other factors, such as changing student characteristics and institutional resources, play little or no role. This is because GPA strongly predicts graduation, and GPAs have been rising since the 1990s. This finding holds in national survey data and in records from nine large public universities. We also find that at a public liberal arts college grades increased, holding performance on identical exams fixed. (JEL I23)

Students who attend college enjoy many long-run benefits (Oreopoulos and Petronijevic 2013). Students who complete college have even better outcomes (Jaeger and Page 1996; Ost, Pan, and Webber 2018). Despite the large returns on college completion, many students who enroll in college do not graduate, leading to what some have described as a “college completion crisis” (Deming 2017). In fact, in 2016, the six-year graduation rate for college completion at four-year schools was 67 percent (Shapiro et al. 2017).¹ Consequently, policy and research attention has increasingly focused on college completion.²

In influential work, Bound, Lovenheim, and Turner (2010—hereafter BLT) showed that changing institutional characteristics and, to a lesser extent, changing college preparedness led to declining college completion rates from the 1970s to

*Denning: Brigham Young University, NBER, IZA, CESifo (email: jeffdenning@byu.edu); Eide: Brigham Young University (email: eide@byu.edu); Mumford: Purdue University (email: mumford@purdue.edu); Patterson: Brigham Young University (email: rich_patterson@byu.edu); Warnick: Stanford University (email: mwarnick@stanford.edu). David Deming was coeditor for this article. We thank Sandra Black, Lars Lefgren, Sarah Turner, and participants at the BYU R Squared seminar, NBER Education 2019 Spring Meetings, Society of Labor Economists 2019 Meetings, and Association for Education Finance and Policy 2019 Conference for useful comments on the draft. We would like to thank Daniel Sabey and Michael Jensen for their excellent research assistance. IRB approval was obtained through Brigham Young University, Purdue University, and the United States Military Academy.

[†]Go to <https://doi.org/10.1257/app.20200525> to visit the article page for additional materials and author disclosure statement(s) or to comment in the online discussion forum.

¹Hess and Hatalsky (2018) offer a nice summary of our understanding of the causes of college completion, policy tools, trends, etc.

²As examples, see Scott-Clayton (2012); Castleman and Long (2016); Bettinger et al. (2019); Denning, Marx, and Turner (2019); and Barr (2019).

the 1990s.³ Our study asks what has happened to college completion rates after 1990. First, we document across three national data sources that aggregate trends have changed: college completion rates increased from 1990 to the present. The increase in graduation rates occurred across institution types, including public and private universities as well as elite and nonelite institutions. College graduation rates increased for both men and women, which is notable because men drove the decline documented in BLT.

Next, we investigate why college completion rates increased. We discuss relevant trends that could affect college graduation, such as the college wage premium, enrollment, student preparation, study time, employment during college, price, state support for higher education, and initial college attended. The trends in these variables would predict declining college graduation rates almost uniformly. We use two nationally representative surveys from the National Center for Education Statistics (NCES): the National Education Longitudinal Study of 1988 (hereafter NELS:88) and the Education Longitudinal Study of 2002 (hereafter ELS:2002) to decompose the change in graduation rates into changes in student characteristics and institution-level factors (National Center for Education Statistics 1988; Bozick and Lauff 2007).⁴ These longitudinal, student-level datasets have information on high school student background, academic preparation, college enrollment, and graduation outcomes. We find that student characteristics, institutional resources, and institution attended explain little of the change in graduation rates.

We then explore alternative hypotheses to explain the increase in graduation rates. We document that college student grade point averages are higher in ELS:2002 than in NELS:88. This is true after accounting for precollegiate math test scores, student demographics, high school coursework, and institution type attended. The increase in GPA happens across the distribution and explains a large share of the increase in college completion: changes in first-year GPA account for 95 percent of the change in graduation rates in our decomposition.

Rising college grades and the subsequent increase in graduation rates could be caused by improved college preparation (not captured in NELS:88 and ELS:2002), increased learning in college, or grade inflation. To explore these provocative patterns in rising GPAs that we observe in national data, we turn to administrative student data from two additional sources. First, using records obtained from the registrars of nine large public universities,⁵ we document that rising grades persist when including controls for student demographics, home zip code, university attended, fixed effects for each SAT score, major choice, and first-semester courses taken. These results suggest that improving college preparation explains little of the

³The overall decline was largely due to the group of institutions that BLT refer to as public “non-top 50.” Bound, Lovenheim, and Turner (2012) also document that time to degree has increased over a similar time frame. Many subsequent papers explore the causal effect of institution attended on graduation (Cohodes and Goodman 2014; Zimmerman 2014; Goodman, Hurwitz, and Smith 2017; Bleemer 2018; Black, Denning, and Rothstein 2020).

⁴NELS:88 is the primary dataset used for the later period in BLT.

⁵These data are obtained through the MIDFIELD partnership. The universities included are Clemson University, the University of Colorado, Colorado State University, the University of Florida, Florida State University, Georgia Institute of Technology, North Carolina State University, Purdue University, and Virginia Polytechnic Institute and State University (Virginia Tech). Institutions that participate in the MIDFIELD partnership share de-identified longitudinal student record data for all degree-seeking undergraduate students.

increase in GPAs over time. Second, we use microdata from a public liberal arts college that include performance on course-level comprehensive final exams that appear to have a constant level of difficulty over time. We document that grades are not just increasing over time conditional on student characteristics and course schedules but also conditional on final exam performance. Furthermore, in two required science courses that administered identical final exams across years, we find that grades are rising over time even when controlling for performance on identical final exams.

The results from the large public universities and public liberal arts college data suggest that rising grades cannot be explained by changes in student learning. Instead, our findings from the nationally representative data, the sample of large public universities, and the public liberal arts college, in combination with trends in student time spent studying and labor-force participation in college, suggest that GPAs have been rising due to relaxed standards. These relaxed standards account for much of the increase in college graduation rates.

The rest of the paper proceeds as follows: Section I describes trends in the college graduation rate and other related trends. Section II outlines potential explanations for the change in college graduation rates. Section III describes the data. Section IV discusses the empirical strategy. Section V contains the results, and Section VI concludes.

I. Trends in College Graduation Rates

We begin by establishing that college graduation rates have increased since the 1990s. We use three data sources to document these trends. All three sources have limitations; however, the evidence is consistent across all sources we consider.⁶

First, we use the decennial census to examine college graduation trends following BLT (Ruggles et al. 2019). Figure 1 shows the ratio of bachelor's degree recipients to those with some college among respondents who are 25 years old. If the college graduation rate increases, this ratio will increase. The decline from 1970 to 1990 is visible and is the focus of BLT. However, from 1990 to 2010, the ratio of bachelor's degree recipients to those with some college increased—especially for women.⁷

In the period that BLT study, there were no nationwide, institution-level graduation data available. However, NCES started publishing cohort graduation rates by college with the entering class of 1991. We summarize the trends in these graduation rates in Figure 2.⁸ The Integrated Postsecondary Education Data System (IPEDS) collects graduation rates for all schools that receive Title IV federal financial aid; however, the graduation rates are calculated only for first-time, full-time students

⁶We also find similar graduation patterns in our large public university and public liberal arts college administrative data sources. Table A1 shows that six-year graduation rates in our sample of large public universities increased from 62 percent to 64 percent between 1990 and 2000, and Table A2 shows that six-year graduation rates at our public liberal arts college increased from 83 percent to 86 percent between the 2001–2013 and 2010–2012 entering cohorts.

⁷Archibald, Feldman, and McHenry (2015) document this fact using similar census data.

⁸For Figure 2, we exclude schools that were predominantly online because online schools are different in many ways. Online schools are concentrated at for-profit institutions and have lower graduation rates than traditional schools. Information about online enrollment is first available in 2012 in IPEDS. We follow the convention of Deming et al. (2015) and label institutions that were predominantly online in 2012 as online prior to 2012.

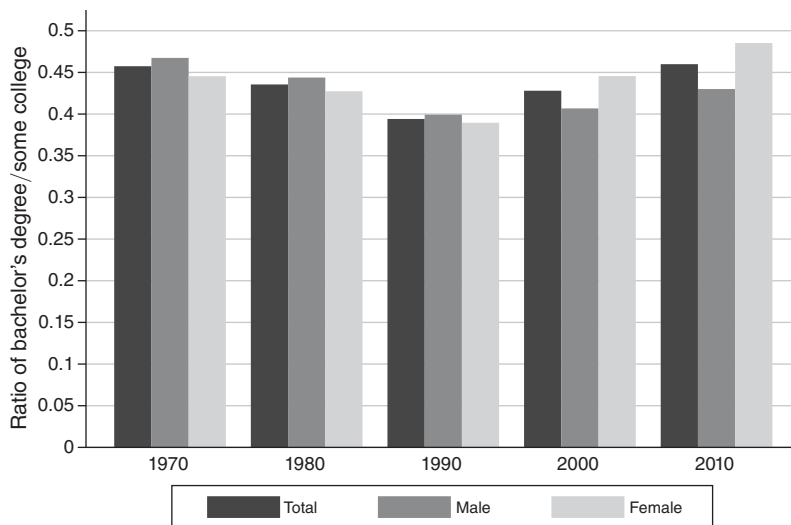


FIGURE 1. RATIO OF BACHELOR'S DEGREE/SOME COLLEGE AMONG 25-YEAR-OLDS

Notes: Data come from the decennial census downloaded from the Integrated Public Use Microdata series database at IPUMS USA. Following BLT, we calculate the ratio of 25-year-olds having a bachelor's degree to 25-year-olds with at least some college completed.

who begin in the fall.⁹ We focus on the six-year graduation rate in Figure 2. Despite this limitation, the trends in the IPEDS data mirror the ratio of the number of bachelor's degrees to people with some college found in Figure 1. Long (2018) notes similar trends in graduation rates using the same data starting with the entering class of 1998 and describes differences in graduation rates across institution types, student demographics, and the consequences of non-completion.¹⁰

Throughout this paper, we consider enrollment and graduation separately by institution type. We follow the convention of BLT, with one notable difference: we separately consider for-profit institutions.¹¹ With that modification, we categorize schools as follows: top-50 public, non-top-50 public, highly selective private nonprofit, nonselective private nonprofit, and for-profit. We follow BLT in our definitions of "top-50" and "selective" for public schools and private schools, respectively, and provide complete descriptions of these groups in Section III.

Figure 2 shows there is substantial heterogeneity in the graduation rates across institution types. The graduation rates are highest for highly selective nonprofit universities and top-50 public institutions. The lowest graduation rates are at for-profit institutions. Setting aside for-profit schools, graduation rates continuously increase from 1991 to 2010. Not all school types had increases of the same size; public schools had larger increases than nonprofit private schools at similar levels of

⁹These graduation rates will not capture students who do not fit this description. For instance, this measure is likely to do a poor job measuring college completion at for-profit colleges, where many students are "nontraditional."

¹⁰Our contribution relative to Long (2018) is that we document the graduation rate increase over a longer time frame, across more sources, and, most importantly, we investigate the reasons for this increase.

¹¹For-profit institutions had lower graduation rates and increased enrollments in the 2000s. Further, for-profits are different in many ways from nonprofit institutions (Deming et al. 2012).

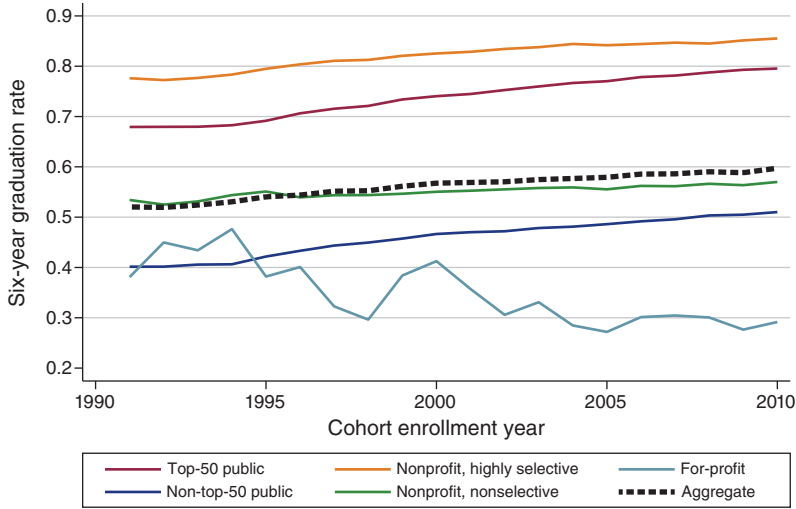


FIGURE 2. GRADUATION RATES BY COLLEGE SECTOR

Notes: This figure plots the average six-year graduation rate for different institution types. Cohort enrollment year refers to the year that students were first enrolled. See Section III for a detailed description of how institutions are assigned to a type. Schools that were predominantly online are excluded for all cohorts. These rates were calculated using only students who were full-time, first-time degree seekers in their respective entry years.

Source: IPEDS

selectivity. However, the direction of the graduation rates is consistent across institution types. When combining all schools weighted by enrollment (the black dashed line), the graduation rate increases from 52.0 percent to 59.7 percent. For-profit schools exhibit a different pattern. Graduation rates decline for the 20 years we observe, which coincides with the growth in the for-profit sector, as seen in Figure A1. The growth in the for-profit sector suggests some of the decline may be due to the changing composition of the sector's institutions or students.

We also show that the graduation rates for the two nationally representative samples followed a similar pattern. We define college graduation as graduation within 8 years of expected high school graduation following BLT.¹² In Table 1, we show the eight-year graduation rate for the two nationally representative surveys used in this paper, NELS:88 and ELS:2002. We show that the overall graduation rate increased by 3.77 percentage points. We find statistically significant increases in graduation rates for top-50 and non-top-50 (at the 10 percent level) public schools of 8.57 and 4.89 percentage points, respectively. We also see statistically significant increases at community colleges and all nonprofit colleges. Less selective and highly selective private universities do not have a statistically significant change in their graduation rates across NELS:88 and ELS:2002. This contrasts with aggregate graduation trends in IPEDS but may be due to relatively small samples in the individual-level surveys.

¹²We know when students actually graduate from high school, but we use years from expected high school graduation to avoid conditioning our outcome on an endogenous variable (actual high school graduation).

TABLE 1—CHANGES IN COLLEGE GRADUATION RATES

Sample	1988	2002	Difference
Full sample	48.7	52.5	3.77 (1.71)
<i>Initial institution type</i>			
Total four-year public	63.3	67.7	4.49 (2.38)
Non-top-50 public	56.1	61.0	4.89 (2.59)
Top-50 public	82.1	90.7	8.57 (2.57)
Total four-year private	78.4	77.2	-1.14 (2.30)
Less-selective private	72.3	71.2	-1.05 (2.96)
Highly selective private	90.5	92.2	1.66 (2.76)
Total community college	19.6	24.3	4.77 (1.71)
For-profit college	25.2	24.7	-0.42 (8.92)
All nonprofit colleges	48.8	53.0	4.18 (1.72)
All four-year colleges	68.3	70.6	2.31 (1.85)

Notes: 1988 refers to NELS:88, and 2002 refers to ELS:2002. This table describes the graduation rates for college enrollees by school type for 1988 and 2002. The row for all nonprofit colleges includes private and public colleges and excludes for-profit colleges.

We verify that the changes in graduation rates in NELS:88 and ELS:2002 are similar to those observed in IPEDS. NELS:88 and ELS:2002 represent the high school graduating cohorts of 1992 and 2004, respectively. The change in overall graduation rates for the entering cohorts of 1992 to 2004 in IPEDS is 5.74 percentage points, which is similar to but somewhat larger than what is observed across NELS:88 and ELS:2002, at 3.77 percentage points. Hence, using NELS:88 and ELS:2002 should yield insight because the change in graduation rates is similar to observed aggregate changes.

II. Potential Explanations for Changes in Graduation Rates

We initially consider two types of explanations for changes in college graduation rates: student-level characteristics and institution-level characteristics. Student characteristics that may affect college graduation include student preparation, choice of college major, work during school, and time spent studying. Institutional characteristics that may explain changes in graduation rates include the quality of instruction, financial aid, student services, and standards for degree receipt. We will explore some of these explanations directly later (e.g., student preparation, major choice, and standards for degree receipt), while others we consider given the existing evidence (e.g., time spent studying, employment during school, and returns to

TABLE 2—CHANGES IN INITIAL COLLEGE ATTENDED

	Total		Men		Women	
	1988	2002	1988	2002	1988	2002
Percent of HS grads attending college	69.3	78.3	66.9	74.2	71.8	84.1
<i>Distribution of enrollment by type of institution</i>						
Total four-year public	39.9	42.2	39.7	42.7	40.1	41.7
Non-top-50 public	28.9	32.6	28.3	33.2	29.6	32.1
Top-50 public	10.9	9.6	11.4	9.4	10.5	9.6
Total four-year private	20.0	18.4	18.0	18.0	21.8	18.8
Less-selective private	13.3	13.2	11.4	12.2	15.1	14.0
Highly selective private	6.7	5.2	6.7	5.8	6.7	4.7
Total community college	39.8	37.2	41.8	36.6	37.9	37.6
For-profit colleges	0.4	2.3	0.5	2.7	0.3	1.9

Note: This table describes the change in the fraction of students attending college within two years of expected high school graduation and initial college attended for the 1988 and 2002 Educational Longitudinal Study cohorts.

education). In the end, we conclude that changing standards for degree receipt are most likely to explain increasing graduation rates.

Student-Driven Explanations.—In trying to explain the increases in college completion, several trends are worth noting. One possibility is that changes in student composition could explain changes in college graduation rates. Table 2 shows that college enrollment rose from 69.3 percent in NELS:88 to 78.3 percent in ELS:2002.¹³ Additionally, Figure A1 shows that college enrollment has grown steadily since 1975 and that, at least since the 1990s, enrollment has increased at every type of institution. With a larger fraction of students entering college, there may be more entrants who are relatively less prepared because as more students enter college, they likely come from further down the distribution of student achievement. Therefore, enrollment sector trends are unlikely to explain increases in graduation rates.

Another possibility is that potential college students are more prepared for college than in the past. Measuring changes in preparation for marginal college entrants could be confounded with the increase in college attendance if the increase in college attendance coincided with an increase in performance. Instead, we note that the performance of 17-year-old students on the math and reading portions of National Assessment of Educational Progress (NAEP) is essentially unchanged since the 1970s (National Center for Education Statistics 2013).¹⁴ Hence, as college enrollment increases, the average preparation of college entrants would fall because the distribution of student ability is constant. We expect college preparation would

¹³The equivalent fractions of high school completers enrolling in college in Figure A1, panel A are 61.9 and 66.7. These two data sources disagree slightly about the level of college enrollment but present very similar trends in college enrollment over the same years.

¹⁴Blagg and Chingos (2016) explore the reason for the stagnating NAEP scores and conclude that “stagnant achievement among high school students is a real phenomenon.” They discuss potential explanations for this phenomenon, including changes in high school persistence, test/subject alignment, and students taking the test less seriously and conclude that none of these explanations are likely to explain the change. Notably, the Program for International Student Assessment (PISA) also shows no evidence of achievement gains for 15-year-olds in the United States.

decrease in the time period studied given that college enrollment has increased and that performance on the NAEP is unchanged.¹⁵ Trends in enrollment and student preparation would predict reduced college completion.¹⁶

Once students arrive at college, changing major choices could affect college completion. To explore the role of major choice, we explore what graduation rates would be if we changed the distribution of majors while holding fixed the graduation rates of any particular major. We find that students have not moved toward majors with higher graduation rates over time (details provided in Section VB).

Changes in learning could also affect graduation rates. However, students are spending less time studying and more time employed over the time period we consider. Babcock and Marks (2011) show a drop in the number of hours studied from 1961 to 2003. Neither student demographics—including race, gender, and parental education—nor student SAT scores can explain much of the change in college study habits. Concurrently, college students increased their labor supply over this period. Scott-Clayton (2012) shows that average hours worked doubled from 1970 to 2000. However, student labor supply fell during the Great Recession. All else equal, we would expect declining graduation rates when students spend more time working for wages during college due to decreased study time, less full-time enrollment, etc. Trends in student labor supply and study time would predict declining college graduation rates, except perhaps during the Great Recession.

Finally, BLT note that an increasing college wage premium would predict an increasing graduation rate. However, the college wage premium has flattened beginning for cohorts born around 1970 (Ashworth and Ransom 2019).¹⁷ A stable college wage premium for young workers contrasts with earlier periods (including the period studied by BLT) when the college wage premium was growing. Hence, in the period we study, the college wage premium is unlikely to explain increasing graduation rates.

Institutional Explanations.—The types of institutions students attend could potentially explain graduation rate patterns. Table 2 shows the changes in initial college attended across the NELS:88 and ELS:2002 cohorts. The share of students attending non-top-50 public and for-profit colleges increased. The share of students attending highly selective private, less-selective private, top-50 public, and community colleges decreased. The pattern of enrollment increases in non-top-50 public colleges balanced against the decrease in community college attendance, and

¹⁵ Archibald, Feldman, and McHenry (2015) consider the change in preparation among college enrollees. They document a decline in preparation, as measured by math test scores and reading test scores. They find that student high school GPA matters for college enrollment. However, the increase in high school GPAs is difficult to interpret because GPAs are growing faster in affluent schools than in less affluent schools (Gershenson 2018). They argue that students matched to schools on the basis of high school GPA reduce the impact of lower average math test scores.

¹⁶ We assign students their math percentile in the distribution of math test scores. We argue that this represents students' absolute level of preparation because the overall distribution of student preparation is unchanged, as discussed. In Table 3, college entrants' math percentile decreases from the fifty-ninth percentile to the fifty-sixth percentile. The decline in math percentile is also present among college graduates, where it fell from the seventy-first percentile to the sixty-eighth percentile.

¹⁷ Valletta (2016) shows a similar trend starting slightly later, with the wage-premium flattening starting in 2000. Valletta (2016) considers workers age 25–64, whereas Ashworth and Ransom (2019) consider workers age 25–34, which may explain some of the discrepancy.

increased for-profit attendance leads to an ambiguous prediction about the overall college completion rate if the average graduation rate of an institution causally affects college graduation.¹⁸

It is unlikely that changes in college affordability could explain changes in graduation rates. College has become more expensive since the 1990s. Inflation-adjusted published tuition and fees have increased by over 300 percent since 1987. The net price of college, accounting for financial aid, has nearly doubled since 1997 for public four-year institutions (Ma et al. 2017). The price of college has been shown to affect college completion (Scott-Clayton 2011; Castleman and Long 2016; Bettinger et al. 2019; Denning 2019). Relatedly, state support for higher education per student has declined since 1985 (Ma et al. 2017), and state funding for higher education has been shown to affect enrollment and graduation rates (Deming and Walters 2017).¹⁹ Overall, the rising price of college would predict declining graduation.

Another possibility is that the instructional resources, such as student-to-faculty ratios, have changed. Instructional resources could affect graduation rates through changes in education quality or the availability of required courses. A change in instructional resources is a potentially promising explanation, as BLT found changing student-to-faculty ratios explained approximately 75 percent of declining graduation rates at public institutions in earlier cohorts. However, in Table A3, we find that between the NELS:88 and ELS:2002 samples, student-faculty ratios increased from 39.4 to 40.4 and instructional expenditures fell from \$4,581 to \$4,288.²⁰ As we explain in detail in Section V, both changes in instructional resources predict a decrease in graduation rates.

Finally, there has been increased policy attention to college completion during this period. For example, the number of state policies that tie appropriations for higher education to college completion via performance-based funding mechanisms has increased. The use of these mechanisms grew beginning in the 1990s. Evidence on the effects of these mechanisms is mixed, with some studies finding that they affect degree production (Hillman, Tandberg, and Fryar 2015; Tandberg and Hillman 2014; Hillman, Fryar, and Crespín-Trujillo 2018) and some finding that they do not (Hillman, Tandberg, and Gross 2014). Increased attention to graduation and performance-based funding gives schools an incentive to increase graduation rates. However, even if performance-based funding does affect graduation, it would be an indirect mechanism. For performance-based funding to have an effect, it must induce schools to change something about the degree production process.

Changing Standards for Degree Completion.—Trends in the college wage premium, student enrollment, student preparation, student studying, labor supply in college, time spent studying, and the price of college would all predict decreasing

¹⁸This assumption has good empirical support (Cohodes and Goodman 2014; Zimmerman 2014; Goodman, Hurwitz, and Smith 2017).

¹⁹Bailey and Dynarski (2011) document that there have been increases in the income gap in unconditional college graduation—that is, graduation without conditioning on college attendance. By contrast, we focus on graduation rates among those who enter college and document that these are increasing. Increasing unconditional graduation rates could happen with declining graduation rates or increasing graduation rates.

²⁰We use the Higher Education Price Index to deflate spending.

college graduation rates. The patterns for enrollment by institution type yield an ambiguous prediction. Despite the bulk of the trends predicting decreasing graduation, we document that the college graduation rate is increasing. These trends foreshadow what we find in our analysis and present a puzzle. The trends in the variables that explained the decline documented by BLT will not be able to explain the increase in graduation rates observed from 1990 to 2010.

We propose, and test for, an additional channel that may change college completion rates—standards for degree receipt. Instructors, departments, and institutions may have incentives to inflate grades or increase GPAs for reasons other than student performance. Instructors who give students higher grades receive better teaching evaluations (Krautmann and Sander 1999; Langbein 2008). Departments that increase grades see higher student enrollments (Butcher, McEwan, and Weerapana 2014). Additionally, colleges have strategic incentives to offer less informative grades (Boleslavsky and Cotton 2015) and institutional efforts to curb grade inflation can fail to make transcripts more informative and can instead reduce welfare (Bar, Kadiyali, and Zussman 2012).²¹

Increasing grades explain, in a statistical sense, a majority of the changes in graduation rates in our decomposition exercise. To interpret whether the increase in grades is due to changes in performance or grade inflation, we supplement our analysis with results from two additional samples. We first document similar trends in graduation and GPA in our large public universities and public liberal arts college samples. We then show that grades are increasing while controlling very finely for student preparation in the large public universities sample. We also show that grades are increasing at the public liberal arts college after controlling for student learning. These two additional samples present evidence that the increase in grades is consistent with grade inflation.

III. Data

We use microdata to examine the reasons for the increase in college graduation rates. We begin with two longitudinal surveys sponsored by the National Center for Education Statistics, NELS:88 and ELS:2002. NELS:88 and ELS:2002 capture college-going behavior of the high school classes of 1992 and 2004, respectively. The surveys provide information about whether a student attended college, the type of college attended, whether the student graduated from college, and the timing of college attendance and graduation.

NELS:88 is a nationally representative, longitudinal study of eighth-graders in the United States in 1988. The cohort was surveyed again in four follow-ups, which occurred in 1990, 1992, 1994, and 2000. Postsecondary transcripts were also

²¹Evidence of patterns of grade inflation is mixed, with some studies finding support for grade inflation (Rojstaczer and Healy 2012) and others finding none (Pattison, Grodsky, and Muller 2013). We will discuss grade inflation in Section V. Griffith and Sovero (2019) use administrative data from a public research university and find that grades have increased significantly since 1980. They hypothesize that an increasing number of instructors with job uncertainty may face pressures to increase grades, which is borne out empirically. Bar et al. (2009) show that at Cornell University, publishing average course grades induced students to enroll in classes with historically higher grades.

collected in 2000. ELS:2002 is a nationally representative, longitudinal study of tenth-graders in 2002. There were three follow-up surveys, which were administered in 2004, 2006, and 2012, with postsecondary transcripts collected in 2013. Importantly, both surveys include student assessments in math (and other areas) taken during high school, and we use the math assessments as a measure of student preparedness for college. Another strength of these surveys is that they contain a host of individual and family background variables. We use fathers' and mothers' educational attainment (no high school diploma, high school diploma, some college, BA, graduate school), parental income (divided into income-level categories), gender (male), and race/ethnicity (Asian, Hispanic, African American, White). Following BLT, we impute precollegiate math test scores, mothers' education, and fathers' education for both surveys because these data are missing for many students. We also impute first-year college GPA for both surveys. For NELS:88, we also impute parental income.²²

We follow BLT in how we define college attendance and college completion. We consider students who attend college within two years of when their high school cohort would be expected to graduate. The college completion rate is the proportion of students who attend college within two years of when the high school cohort would be expected to graduate and obtain a bachelor's degree within eight years of expected high school graduation.

We also follow BLT in assigning institutions to types, which are primarily based on the 2005 *U.S. News and World Report* college rankings.²³ We assign the highest-rated 50 public schools to the "top-50 public" category. The 65 highest-rated private universities, the 50 highest-rated liberal arts colleges, and the armed service academies are categorized in the "highly selective private" category.²⁴ Other four-year public schools are assigned to the "non-top-50 public" category, and other four-year, nonprofit private schools were assigned to the "less selective private" category. Nonprofit two-year colleges are assigned to the "community college" category. Due to the recent rise in for-profit colleges, we created a new category, "for-profit colleges," and placed all for-profit colleges in this category.

Table 3 presents summary statistics for our two samples. From NELS:88 to ELS:2002, college enrollees had lower precollegiate math percentiles, moving from 58.88 to 55.93. Despite this decline in preparation, first-year college GPA increased from 2.44 to 2.65. Student-faculty ratios increased slightly, from 39.35 to 40.43. Parental education increased from NELS:88 to ELS:2002, where students whose mothers had at least a bachelor's degree increased by 5 percentage points. Underrepresented minorities constituted a slightly larger fraction of college enrollment in ELS:2002 than in NELS:88. Parental income shifted toward middle

²²We follow BLT's imputation strategy by using the multiple imputation by chained equation (MICE) algorithm, implemented by the STATA module "ICE." See the Data Appendix for more information on imputation.

²³We deviate from BLT's assignment due to a few cases described in the online Appendix. We opted to use the same rankings to aid in comparability and because rankings are quite stable across years.

²⁴We follow BLT in classifying armed services academies as private rather than public institutions. While they are publicly funded, in many ways (e.g., academic abilities of students) they are more similar to highly selective private institutions.

TABLE 3—SUMMARY STATISTICS, 1988 AND 2002

Variable	All college attendees		BA recipients	
	1988	2002	1988	2002
Bottom math quartile	0.14	0.18	0.04	0.06
Second math quartile	0.23	0.24	0.16	0.18
Third math quartile	0.29	0.27	0.29	0.31
Top math quartile	0.33	0.30	0.51	0.45
Math test percentile	58.88	55.93	71.12	67.69
Student-faculty ratio	39.35	40.43	29.70	32.10
ln(S/F ratio)	3.52	3.55	3.28	3.55
Missing S/F ratio	0.03	0.02	0.01	0.01
Student-staff ratio	199.55	197.33	105.72	120.13
First-year GPA	2.44	2.65	2.88	3.05
Major graduation rate (four-year schools)	0.77	0.75	0.77	0.77
Father's education:				
No high school	0.11	0.10	0.06	0.06
High school diploma	0.29	0.28	0.21	0.22
Some college	0.22	0.22	0.22	0.21
Bachelor's degree	0.19	0.23	0.25	0.28
Graduate school	0.18	0.17	0.27	0.24
Mother's education:				
No high school	0.10	0.09	0.05	0.05
High school diploma	0.34	0.28	0.26	0.23
Some college	0.25	0.26	0.27	0.25
Bachelor's degree	0.18	0.23	0.25	0.28
Graduate school	0.12	0.15	0.17	0.19
Parental income (\$):				
<10,000/15,000	0.06	0.06	0.03	0.04
<20,000/25,000	0.10	0.09	0.06	0.06
<25,000/35,000	0.07	0.11	0.06	0.07
<35,000/50,000	0.13	0.18	0.10	0.16
<50,000/75,000	0.22	0.23	0.20	0.23
>50,000/75,000	0.42	0.33	0.55	0.44
Race/ethnicity:				
Asian	0.05	0.04	0.06	0.06
Hispanic	0.10	0.12	0.06	0.07
African American	0.11	0.11	0.07	0.08
White	0.75	0.73	0.81	0.79
Male	0.49	0.46	0.45	0.44
Number of observations	7,770	8,640	4,110	4,970

Notes: 1988 refers to NELS:88, and 2002 refers to ELS:2002. This table presents summary statistics from 1988 and 2002 for college enrollees and graduates. Math test quartiles come from precollegiate assessment tests. The number of observations is rounded to the nearest ten to comply with the data use agreement.

incomes. Last, the fraction of college students who are male declined, from 49 percent to 46 percent.

To explain the role of rising GPAs in increasing graduation rates, we incorporate individual-by-course level administrative data from two sources. The first dataset combines microdata for all degree-seeking undergraduate students at nine large public universities (Clemson, Colorado, Colorado State, Florida, Florida State, Georgia Tech, North Carolina State, Purdue, and Virginia Tech) for cohorts entering between

1990 and 2000 (Ohland and Long 2020). The large public universities data includes student demographic information, admissions information (including SAT scores), individual course grades, and degrees earned for the 530,036 students entering one of these institutions between 1990 and 2000.²⁵ Table A1 presents summary statistics for the 1990 entering cohort as well as the 2000 entering cohort and shows that these students are quite similar to those from the nationally representative NELS:88 and ELS:2002 in terms of math quartile, race, and gender.²⁶ The first-year GPA for all students increases from 2.68 to 2.79 over the decade.

Second, we analyze trends in GPA using detailed student course performance microdata from a public liberal arts college (Denning et al. 2021). These data include student demographic information, graduation rates, individual course grades, and student scores on final exams for 14,193 students entering the institution between 2001 and 2012. Table A2 presents summary statistics for early (2001–2003) and late (2010–2012) entering cohorts. While the population at the public liberal arts college is unique in some ways, its distribution across race and ethnicity is similar to those in NELS:88 and ELS:2002. Further, when comparing the dynamics of the public liberal arts college to changes between NELS:88 and ELS:2002, there are similar trends in GPA growth (2.77 to 3.02) and graduation rates (83.1 percent to 85.9 percent) across early and late cohorts.

While these additional administrative datasets are not nationally representative, they offer larger samples that include the course grades of every undergraduate student and more detailed precollege student ability measures from the college application. In the case of the public liberal arts college, course-level final exam data separate from the letter grade provides an additional advantage.

IV. Empirical Strategy for Graduation Rate Decomposition

We wish to decompose the increase in college graduation rates into student factors and institutional factors. In doing this, we closely follow the method used by BLT, which is a modified Blinder-Oaxaca decomposition (Blinder 1973; Oaxaca 1973). The key challenge arises because we are interested in college graduation, which is discrete. Throughout this section, both institutional and student factors will be referred to as x_j .

First, we use a logit model to predict college completion in both the NELS:88 and ELS:2002 samples. This allows for nonlinear effects of any x_j , which are likely to be important in describing changes in graduation rates. If we were using a linear framework, we could simply take the mean change in observable characteristics (x_j) across the two periods and multiply it by the estimated effect of the observable characteristic. However, using a logit does not allow this simple decomposition because the effect of changes in a given observable characteristic not only depends on the mean size of the change, but also on where in the distribution of

²⁵The MIDFIELD partnership under which we obtained the data does not allow us to report any results separately by institution that would enable readers to identify the institution. Students without a reported SAT or ACT test score (primarily transfer students) are excluded from the tables.

²⁶The math test frames are different but tell a similar story of positive selection, on the basis of math tests, into college.

the characteristic that change occurs. To simulate the overall change in graduation rates, we use the estimates from ELS:2002 and the covariates in NELS:88 to generate a predicted probability of graduation and compare this to the actual graduation rates in ELS:2002. Generating how much of the overall change is due to changes in all characteristics simply compares the predicted graduation rates using NELS:88 covariates combined with the estimated coefficients from ELS:2002 to the actual graduation rates in ELS:2002.

We also wish to examine the effect of a particular x_j , which is not as straightforward. In principle, we would like to generate the distribution of a particular x_j from the ELS:2002 sample (i.e., the later cohort) in the NELS:88 sample (i.e., the early cohort) while holding all other variables constant. We follow BLT and do this by matching observations across samples. We will use an example to illustrate this point: math test score percentile. For all students in NELS:88, we assign each student a rank in the distribution of precollegiate math test scores; we also do this for all students in ELS:2002. We then match each student in ELS:2002 with the student who has the same rank in NELS:88 and assign the test score percentile from NELS:88. We break ties randomly. This process ensures that we do not match students with high math scores with students whom we would expect to have low math scores.²⁷ After matching, we then apply the estimates from the ELS:2002 model and see how predicted graduation probabilities change.²⁸

To interpret these changes causally, we must assume that the logit model of graduation on x_j accurately captures the causal effect and the relationship between the x_j and graduation is the same in both time periods. This is a strong assumption that may not hold. However, even if this strong assumption does not hold, this framework, developed by BLT, offers a consistent way to decompose the changes in the graduation rate into the changes in x_j .

The coefficients from the logit for the whole sample and by school type are presented in Table A4 with ELS:2002 in panel A and NELS:88 presented in panel B. We do not discuss these in detail but do note that the coefficients have the expected sign. In particular, a higher student-faculty ratio, lower income, being male, and lower parental educational attainment are associated with reduced probability of graduation.

V. Results

We start with our base specification, which includes measures of student preparedness, the log of the student-faculty ratio, and initial school type in Table 4. This is the same specification used by BLT, for comparability. It decomposes the change in graduation rates into two main groups. First, we consider changes due to student characteristics (demand side), which include precollegiate math percentile and other student

²⁷ We also reweight the ELS:2002 and NELS:88 samples to have the same number of observations, to facilitate matching. For initial college enrolled, there is not a natural ranking of school types, so we use propensity-score matching to predict what type of college a student would attend. Following BLT, we used propensity-score matching implemented with the STATA module "psmatch2."

²⁸ Alternatively, we could use the estimates from NELS:88 and the distribution of the covariates from ELS:2002. These results are very similar to those presented in the paper.

TABLE 4—DECOMPOSITION EXERCISE, CHANGES IN COLLEGE GRADUATION, BLT SPECIFICATION

	Full sample	Public non-top-50	Public top-50	Private less-selective	Private highly selective	Community college	For-profit schools
NELS:88	48.73	56.12	82.15	72.26	90.50	19.56	25.15
ELS:2002	52.50	61.01	90.71	71.21	92.16	24.33	24.73
Total change	3.77	4.89	8.57	-1.05	1.66	4.77	-0.42
Change due to observables	-1.92	-4.45	-0.42	-0.61	3.60	-0.81	9.43
Change due to student characteristics	-1.64	-2.64	-0.43	-0.63	2.68	-0.84	9.43
Math test percentile	-1.26	-2.04	0.15	-0.78	0.26	-0.96	0.26
Other student characteristics	-0.39	-0.60	-0.58	0.15	2.42	0.12	9.17
Change due to supply-side factors	-0.28	-1.82	0.00	0.02	0.92	0.03	0.00
Student-faculty ratios	-0.28	-1.82	0.00	0.02	0.92	0.03	0.00
Initial school types	0.00						
Residual	5.69	9.35	8.99	-0.44	-1.94	5.58	-9.86

Notes: These differences were created by finding the difference between observed ELS:2002 graduation rates and simulated ELS:2002 graduation rates using distributions of NELS:88 variables. Math test percentiles come from precollegiate assessment tests. “Change due to observables” uses the NELS:88 distribution for all observable variables, that is, how much all observed variables predict the change in graduation. “Math test percentile” uses the NELS:88 distribution only for math test percentile and observed ELS:2002 distributions for all other observable variables. Similarly, change due to student-faculty ratios and initial school types use the NELS:88 distribution for only student-faculty ratios and initial school types, respectively. The change due to supply-side factors is the sum of change due to student-faculty ratios and change due to initial school types. The change due to student characteristics is the difference between change due to observables and change due to supply-side factors. The change due to other characteristics is the difference between change due to student characteristics and the change due to math test percentile. The residual is the difference between the total change and the difference due to observables.

characteristics such as parental education, income, and race. Second, we present changes due to institution-level factors (supply side), which include student-faculty ratios and initial school types.

Focusing on the full sample, there is a 3.77 percentage point increase in the probability of graduation from the NELS:88 cohort to the ELS:2002 cohort. The total explained by observable characteristics is -1.92. This suggests that covariates would predict that graduation rates would decrease by 1.92 percentage points. Hence, the residual or unexplained change is 5.69 percentage points, or 151 percent of the change is unexplained by covariates. Student preparedness would predict a decline in graduation rates of 1.26 percentage points. Student-faculty ratios explain a 0.28 percentage point decline, and initial school type explains none of the change in graduation rates.

Based on the full sample, Table 4 shows that the distribution of student characteristics and supply-side factors cannot explain much of the increase in graduation rates—in fact, they predict graduation declines. This finding was previewed in Section II, where many of the trends that may affect graduation went in the wrong direction for explaining completion rate trends. Hence, we spend the rest of the paper exploring explanations not considered by BLT.

One potential reason that previous explanations no longer explain the change in graduation rates is that the covariates are no longer predictive of graduation.

However, Table A4 reports the coefficients for various covariates. All have the expected sign and are statistically significant. Further, the coefficients are qualitatively similar across the samples.

A. Rising College Grades

In Section II, we previewed a potential change that could explain increasing graduation rates despite the apparent changes in student preparation and other covariates—rising college grades. Both improving preparation for college (in ways not captured in NELS:88 and ELS:2002) or relaxing grading standards would increase graduation rates and be evidenced by increases in students' GPAs.

We find evidence that the increase in grades is due to grade inflation. We document several facts about GPA in the NELS:88, ELS:2002, large public universities, and public liberal arts college datasets. First, GPA predicts graduation. Second, GPAs are increasing over the time frame considered. Third, the growth in GPAs is not well explained by observable student characteristics, course-taking behavior, or performance on final exams that have a constant level of difficulty over time. These facts, combined with trends in student study time and employment, suggest that standards for degree receipt have changed due to grade inflation.

GPA Predicts Graduation.—First-year college GPA is predictive of graduation in each of our datasets. Table 5 presents the coefficients from a linear probability model where graduation is predicted using a linear effect of GPA. Panel A presents results based on the NELS:88 and ELS:2002 samples, and panel B, the public liberal arts college. The relationship between GPA and graduation rate between the NCES samples in panel A is very similar, so we focus on NELS:88 in our discussion. Without controlling for any other covariates, a one-point increase in GPA is associated with a 30 percentage point increase in the probability of graduation. Subsequently, controlling for student characteristics, graduation rate of a student's selected major, and major fixed effects still yields large and precisely estimated associations between GPA and graduation: in each case, a one-point increase in GPA and leads to a 23–24 percentage point increase in graduation (standard errors are approximately 1 percentage point). Similarly, in Table A5 and in panel B of Table 5, we find that a one-point increase in GPA corresponds to a 16–21 percentage point increase in graduation in the large public universities and public liberal arts samples depending on the dataset and controls included.

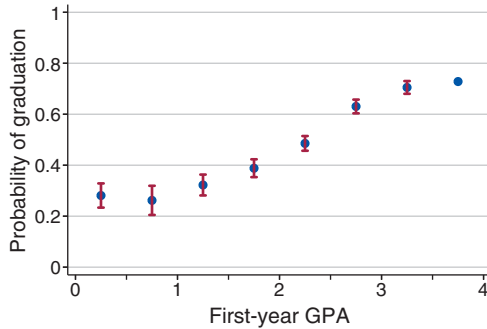
We also show that this relationship is somewhat nonlinear in each dataset. In both Figure 3 (NELS:88 and ELS:2002) and Figure A2 (large public universities and public liberal arts college), we regress graduation on bins of GPA while controlling for covariates such as demographics, test scores, and institution type and plot the coefficients and 95 percent confidence intervals with GPAs larger than 3.5 being the excluded category. In each sample, and in each cohort, the change in the probability of graduation is largest for GPAs between 1.0 and 2.5. That is, improvements in GPAs in that range correlate with meaningful increases in graduation, whereas GPAs above or below that range do not change the probability of graduation as much.

TABLE 5—RELATIONSHIP BETWEEN GRADUATION AND GPA

<i>Panel A. NCES</i>	1988	2002	1988	2002	1988	2002	1988	2002
GPA	0.30 (0.010)	0.27 (0.007)	0.24 (0.011)	0.22 (0.009)	0.24 (0.011)	0.22 (0.009)	0.23 (0.012)	0.20 (0.012)
Student characteristics			X	X	X	X	X	X
Major graduation rates					X	X		
Major fixed effects							X	X
<i>Panel B. Public liberal arts college</i>	2001– 2003	2010– 2012	2001– 2003	2010– 2012				
GPA	0.176 (0.012)	0.164 (0.011)	0.208 (0.014)	0.209 (0.013)				
Controls			X	X				
Observations	3,367	3,646	3,367	3,646				

Notes: This table reports the effect of an increase in first-year GPA on graduation. Panel A considers NELS:88 and ELS:2002. The regressions are run separately in NELS:88 and ELS:2002. 1988 refers to NELS:88 and 2002 refers to ELS:2002. Student characteristics include indicators for parental education, parental income, race, and gender as well as the percentile of math test scores. Math test percentiles come from precollegiate assessment tests. “Major graduation rates” controls for the graduation rate of a student’s major, and major fixed effects are fixed effects for a student’s choice of major. Panel B uses data from the public liberal arts college and has robust standard errors in parentheses. Control variables include age, sex, race, SAT math composite quartile, and SAT verbal composite quartile.

Panel A. 2002: ELS, with covariates



Panel B. 1988: NELS, with covariates

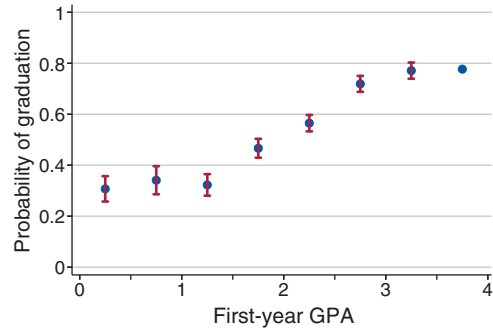


FIGURE 3. NONLINEAR RELATIONSHIP BETWEEN FIRST-YEAR GPA AND GRADUATION

Notes: This shows the relationship between GPA and graduation. Each point represents the coefficient on an indicator for GPA window (0 to 0.5, 0.5 to 1, etc.). The top bin is calculated using the constant in that regression. Student characteristics including gender, race, family income, and precollegiate math test scores are controlled for in these regressions.

GPA likely has a causal effect on graduation for two reasons. First, students must generally maintain a GPA above certain thresholds to avoid dismissal.²⁹ This induces a mechanical, causal relationship between GPA and graduation (Ost, Pan, and Webber 2018). Second, GPA can also act as a signal about a student’s schooling

²⁹For example, each institution in our sample of large public universities has a dismissal policy based on cumulative GPA. These dismissal policies have varying details but typically require students to maintain a 2.0 GPA.

ability (Arcidiacono et al. 2016; Butcher, McEwan, and Weerapana 2014). In either of these cases, higher GPAs cause more students to graduate.

GPAs Are Increasing over Time.—Table 3 shows that GPAs among enrollees increased from 2.44 to 2.65 between the NELS:88 and ELS:2002 samples. We explore changes in GPA in more detail. Where did GPAs increase the most? Figure 4, which plots the cumulative density function of GPAs for each type of institution, shows that GPAs increased throughout the distribution for every type of school we examine except for-profit schools. The GPA increases were somewhat larger at public schools than at private schools, perhaps because the GPAs at private schools were already much higher than at public schools, on average, in NELS:88. Overall, we find that 11 percent more students have a GPA above a 2.0 in ELS:2002 than in NELS:88 (Table A7). This is notable because many institutions have rules about academic probation requiring GPAs of around 2.0 to continue enrollment.³⁰ Hence, the changes in GPA occurred where GPA is most predictive of changes in graduation.

This pattern of increasing GPAs is present in every sample we observe. Figure A3 examines GPAs in two samples of large public universities and shows that GPAs increased between 1990 and 2000 and again between 2009 and 2014.³¹ Figure A4 shows a large increase in GPAs between the 2001–2003 and 2010–2012 cohorts at the public liberal arts college and that, similar to patterns shown in Figures 4 and A3, the fraction of students with at least a 2.0 GPA significantly increased.

Higher GPAs Are Not Explained by Changes in Student Characteristics or Preparation.—GPAs are increasing over time and cannot be fully explained by changes in student characteristics. We test this in the NELS:88 and ELS:2002 samples by regressing GPA on precollegiate math score, demographic characteristics, initial school type, and an indicator for being in the later period (meaning ELS:2002) in Table 6. If student characteristics changed in ways that predicted the change in GPA, the ELS:2002 indicator would become smaller with the additional controls. However, additional controls—including parental education, parental income, race, gender, and math test scores—do not change the effect of GPA substantively, and there is a meaningful and statistically significant coefficient on ELS:2002 ranging from 0.21 to 0.31, indicating that GPA is higher in ELS:2002.

We also control for student preparedness using the rich data on high school courses taken in the NCES datasets. We create a set of indicator variables for advanced coursework that is consistently measured. These include courses in calculus, physics, chemistry, biology, and US history. We control for these in column 5.

³⁰This can also be true for satisfactory academic progress, which is required to maintain financial aid eligibility (Schudde and Scott-Clayton, 2016).

³¹The lower panel of Figure A3 shows the distribution of first-year GPA in 2009 and 2014 for a different sample of public schools where we observe course grades in more recent years, including the University of Colorado, Colorado State University, North Carolina State University, the University of North Carolina at Charlotte, the University of Oklahoma, Purdue University, South Dakota School of Mines & Technology, and Utah State University. First-year GPA continues to increase in the later period, although it is running out of expansion room in the upper-right-hand corner of the figure, suggesting that the increase in the distribution of GPAs at these institutions will necessarily slow.

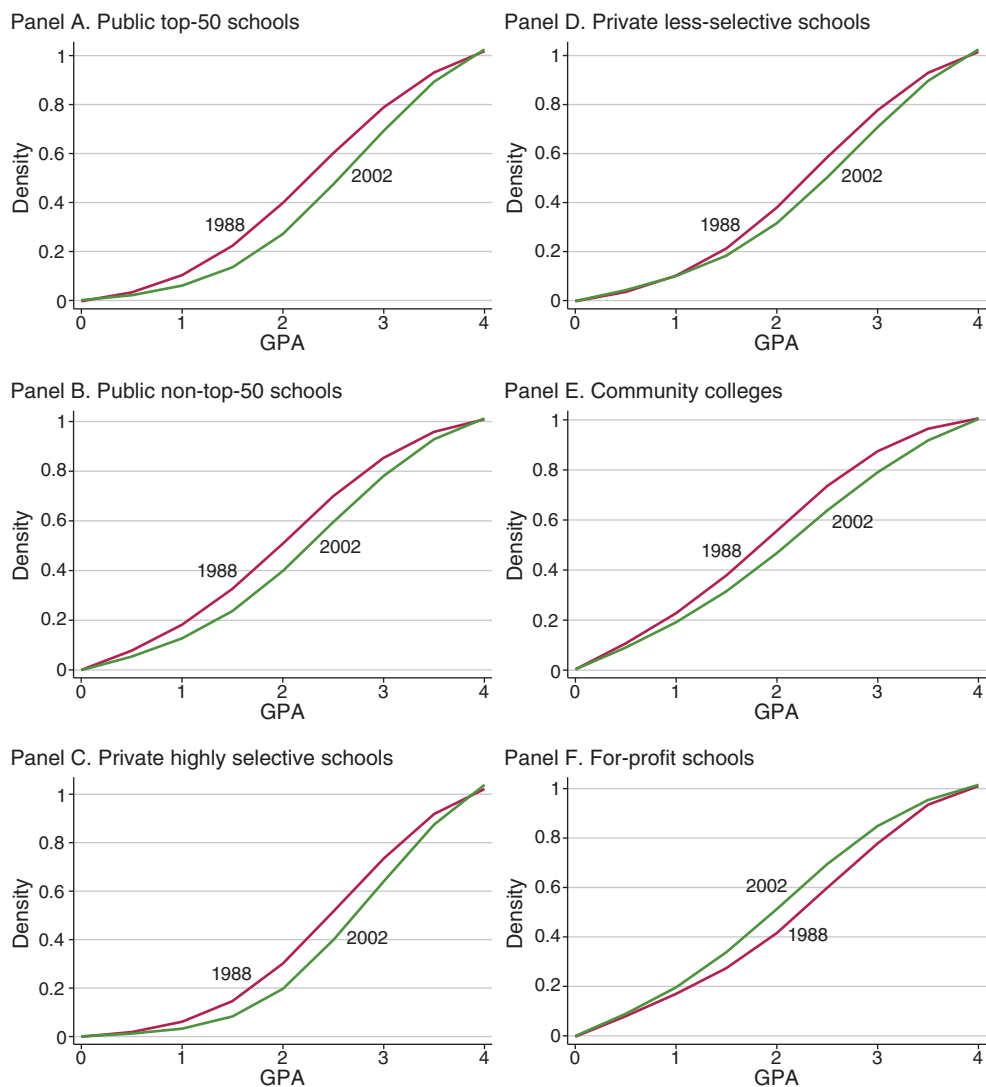


FIGURE 4. SMOOTHED CDF OF FIRST-YEAR GPA FOR 1988 AND 2002 BY INSTITUTION TYPE

Notes: This plots a smoothed CDF of GPAs from NELS:88 and ELS:2002 separately by institution type. 1988 refers to NELS:88, and 2002 refers to ELS:2002.

We also control for some courses that did not appear in the earlier period in column 6 (namely, Advanced Placement Language and Literature courses). Finally, we control for the total number of math and science courses taken in high school in column 7. In every case, our main result holds: student preparedness, measured through test scores and high school coursework, does not explain the increase in first-year college GPA.

While the patterns observed in the nationally representative NELS:88 and ELS:2002 data indicate that rising GPAs may be due to decreasing standards, administrative data from our large public universities allow us to explore the source of

TABLE 6—GPA DIFFERENCES

	First-year GPA						
	(1)	(2)	(3)	(4)	(5)	(6)	(7)
Coefficient on 2002 indicator	0.21 (0.029)	0.28 (0.025)	0.28 (0.025)	0.32 (0.025)	0.31 (0.026)	0.29 (0.028)	0.31 (0.026)
Student characteristics		X	X	X	X		X
Major graduation rate			X				
Major fixed effects				X			
Course indicators					X	X	
Inconsistent course indicators						X	
Total math and science credits							X

Notes: 1988 refers to NELS:88, and 2002 refers to ELS:2002. This table shows the coefficient on an indicator for an observation being 2002. Student characteristics include indicators for parental education, parental income, race, and gender as well as the percentile of math test scores. Math test score percentiles come from precollegiate assessment tests. “Major graduation rate” controls for the graduation rate of a student’s major, and “major fixed effects” are fixed effects for a student’s choice of major. Course indicators include indicators for taking advanced calculus, physics, biology, chemistry, and Advanced Placement US history. “Inconsistent course indicators” adds controls for AP English Literature and Composition, which did not exist in 1988. “Total math and science credits” controls for the total number of credits in math and science.

rising GPAs in more detail. An advantage of this data is that it includes additional information about potential student preparation, including home zip code, transfer status, and US citizenship. Furthermore, the size of the data allows us to flexibly control for SAT scores with fixed effects for every SAT math and reading score interacted with the university.³² Table 7 is a cross-cohort analysis where we examine the time trend in first-year GPA. Column 1 shows a statistically significant increase of 0.019 per year in first-year GPA between 1990 and 2000. Controlling for demographic characteristics, school attended, and home zip code leaves the coefficient unchanged. Including very flexible controls for SAT scores reduces the coefficient on year of entry only slightly, to 0.014. We also include fixed effects for major by institution to account for the potential of changing major composition. Last, we include fixed effects for all first-semester courses, and the coefficient is unchanged. We include these fixed effects to account for shifts in student course-taking that may explain changes in GPA but find that courses taken cannot explain the change in GPA.

This evidence shows that rising grades cannot be meaningfully explained by demographics, preparation, courses, major, or school type. Put another way, equally prepared students in later cohorts from the same zip code, of the same gender and race, with the same initial courses, the same major, and at the same institution have higher first-year GPAs than earlier cohorts.

Interpreting These Facts about GPA.—We have documented that GPAs are higher at the end of our study period than they were at the beginning and that the increase is not explained by observable student characteristics. We interpret this evidence

³²We restrict our sample to students who have a valid measurement for all of the characteristics. This largely omits transfer students, who often do not have an SAT score. The SAT was recentered beginning in 1995, and so we use a concordance to make scores comparable before and after this date. Similarly, we use published concordances to convert ACT scores to SAT equivalents.

TABLE 7—CHANGES IN GPA OVER TIME, LARGE PUBLIC UNIVERSITIES

	(1)	(2)	(3)	(4)	(5)	(6)	(7)
Year of entry	0.019 (0.000)	0.019 (0.000)	0.018 (0.000)	0.018 (0.000)	0.014 (0.000)	0.015 (0.000)	0.014 (0.001)
Student characteristics		X	X	X	X	X	X
Home zip code fixed effects			X	X	X	X	X
University fixed effects				X	X	X	X
SAT math and verbal fixed effects					X	X	X
Major fixed effects						X	X
First-semester course fixed effects							X
Observations	411,951	411,951	411,951	411,951	411,951	411,951	411,951

Notes: This table reports the time trend in first-year GPA from 1990 to 2000 at Clemson, Colorado, Colorado State, Florida, Florida State, Georgia Tech, North Carolina State, Purdue, and Virginia Tech. “Student characteristics” includes age and indicators for race and ethnicity, gender, transfer student, and US citizenship. “Home zip code fixed effects” includes a catch-all category for students without a reported US zip code. Indicators for each SAT math and SAT verbal score are interacted with indicators for the university. Institution-specific major fixed effects (defined at the end of the student’s first year of college) and course fixed effects for every course in the student’s first semester at the university are included in the final two specifications. Each observation is a unique student.

as consistent with grade inflation. However, other explanations are consistent with higher GPAs. For instance, students could be studying more. Unfortunately, we do not observe student study time or effort in our data. However, the trends presented in Babcock and Marks (2011) suggest that time spent studying declined over this period. Another explanation is that perhaps students are more efficient at studying. This could be true, but is hard to test absent measures of student study. The gains from efficiency would have to be large enough to exceed the decline in study time.

The ideal test for whether rising grades can be explained by student preparation, effort, or learning would be a comprehensive assessment that had constant difficulty over the years, given to students, that assessed learning occurring in all college courses. Then, we could see if the grades of students who scored the same on the assessment were increasing over time. We closely approximate this ideal test with our public liberal arts college data. These data allow us to control for course-level final exam scores, which provide potentially objective measures of student knowledge and learning. Specifically, all freshmen must complete a required liberal arts curriculum that has common final exams in each course—exams that do not appear to have increased in difficulty over time.³³ Furthermore, these final exams are often graded automatically or in teams and, in at least one subject, students are given identical exams year-after-year.³⁴

³³ We asked course representatives the following free-response question in an email survey: “From 2001 (or as early as you are aware) to now, has the difficulty of [final exams] increased, declined, or stayed about the same? If the [final exams] have changed in difficulty, when did the changes occur?” We received responses from 86 percent of the messaged faculty. No faculty indicated that tests had become more difficult, 58 percent indicated that difficulty had remained about the same or became easier over time, and 42 percent either did not know, could not tell, or gave an answer that was not responsive to the question.

³⁴ In our email survey to course representatives, we asked, “Are [final exams] graded automatically (e.g., computer, scan, multiple choice), by a student’s instructor, or by team?” In response, 42 percent of faculty indicated that finals were graded automatically or in teams, 33 percent indicated that finals were graded in part automatically and in part by instructor, and 25 percent indicated that finals were graded by instructors.

In Table 8, we estimate how GPA has changed over time at the individual-by-course level at the public liberal arts college, adding controls successively for each course, demographic characteristics, final exam scores, and, in two required science courses, the exact version of the test given. In Column 1, we estimate the correlation between the year of entry and freshman course grades. We find that entry a year later corresponds to a statistically significant 0.025 point increase in GPA. In columns 2, 3, and 4, we control successively for course fixed effects, student characteristics (including SAT test score quartiles), and final exam scores. We find that including these controls has little effect on the relationship between year of entry and freshman grades, suggesting that broad changes in the courses students take, characteristics of students, and overall learning (as measured by final exam performance) are unlikely to explain improving GPAs over time. To investigate whether student sorting into courses to which they are better matched could explain these patterns, in column 5, we restrict our analysis to courses that are part of a required liberal arts curriculum. Our results suggest that student sorting is unlikely to explain improving GPAs over time, as our estimates are indistinguishable from those in column 4.

One potential weakness of this approach is that courses may change or final exam content could change over time. While course representatives do not think this is happening, as indicated in their responses to a survey we distributed, we provide a stronger test of whether improving grades over time could be explained by increased learning. We analyze the relationship between year of entry and GPA in two required freshman science courses where the final exams are comprehensive, are graded by machine or in teams, and change little or not at all from one year to the next.³⁵ Specifically, we examined every final exam, question by question, from 2001–2012 and found that in both required courses, 9 out of 12 of the final exams given were identical to an exam given in another year.³⁶ This setting allows for a very close approximation of the ideal test for grade inflation.

In column 6 of Table 8, we control for course fixed effects, demographic characteristics, and final exam scores in these two science courses and find that entry a year later corresponds with a large and statistically significant 0.060-point increase in GPA. In column 7, we additionally control for an exact exam fixed effect and find that entry a year later corresponds with a 0.053-point increase in GPA. In column 8, when we replace the final exam control with a control for test-specific final exam scores, our results are essentially unchanged. Students with the exact same score on the exact same final exam earned better grades in later years. Our finding that grades are increasing over time, even when student characteristics and performance on identical comprehensive final exams are accounted for, suggests that standards for degree receipt are easing over time at the public liberal arts college.

³⁵ Additionally, the structures of these courses have not changed significantly over time, with the final exams having constant point values over time and accounting for between 20–26 percent of the final grade in each course.

³⁶ In each year, in both courses, a majority of questions from the final exam were identical to questions asked in the prior year's final exam. Furthermore, in the first course, enrolling cohorts in 2002, 2007, 2009, 2010, and 2012 were given identical tests as the prior cohort. In the second course, enrolling cohorts in 2003, 2005, 2009, 2011, and 2012 were given identical tests as the prior cohort.

TABLE 8—CHANGES IN GPA OVER TIME, PUBLIC LIBERAL ARTS COLLEGE

	All freshman courses				Required	Science		
	(1)	(2)	(3)	(4)	(5)	(6)	(7)	(8)
Year of entry	0.025 (0.001)	0.023 (0.001)	0.024 (0.001)	0.021 (0.001)	0.021 (0.001)	0.060 (0.001)	0.053 (0.002)	0.060 (0.002)
Course fixed effects		X	X	X	X	X	X	X
Student characteristics			X	X	X	X	X	X
Final exam scores				X	X	X	X	
Exact test version fixed effect							X	X
Test-specific final exam scores								X
Observations	139,190	139,190	139,190	139,190	127,184	26,697	20,773	20,773

Notes: Observations are at the student-course level. Standard errors clustered at the student level. Samples in each column include students from 2001–2012 enrolling cohorts. Freshmen take a required liberal arts curriculum that includes courses in math, science, social science, English, and history. Demographic variables include age, sex, race, SAT math composite quartile, and SAT verbal composite quartile. Between 2001–2012, tests in two required science courses had similar structures, content, and point values year after year. In the first course, enrolling cohorts in 2002, 2007, 2009, 2010, and 2012 were given identical tests to the prior cohort. In the second course, enrolling cohorts in 2003, 2005, 2009, 2011, and 2012 were given identical tests to the prior cohort. Columns 1–4 include observations from all courses taken during freshman year. Column 5 includes student-course observations from all required freshman courses. Column 6 includes all student-course observations from a required science sequence. Columns 7–8 include estimates for students who took an identical test to at least one other cohort within the required science sequence. Column 7 controls for the exact version of the test that students received while column 8 controls for the interaction between test version and score, essentially creating a comparison of students with the same score on the same test.

While the evidence at the public liberal arts college is specific to that university, we believe that it is likely informative of broader trends. The public liberal arts college has similar graduation and GPA trends as the NELS:88 and ELS:2002 samples.

First, in panel B of Table 5, we find that after controlling for observable characteristics, a one grade-point increase is associated with a 21 percentage point increase in the probability of graduation in both the early (2001–2003) and late (2010–2012) cohorts entering the public liberal arts college. This is nearly identical to the 24 and 22 percentage point increases estimated in the NELS:88 and ELS:2002 samples in panel A of Table 5. Second, Figure A2 shows similar nonlinear relationships between GPA and graduation in both early and late public liberal arts college cohorts and the relationships found in the NELS:88 and ELS:2002 samples (Figure A2): in each of the four samples, the change in the probability of graduation is largest for GPAs between 1.0 and 2.5. Finally, in Figure A4, we show that increases in GPA between the early and late public liberal arts college cohorts are similar to those found between NELS:88 and ELS:2002, as shown in Figures 4 and A3.

Adding GPA to the Decomposition.—Given the evidence that GPA is changing over time and that GPA is predictive of graduation, we show how much of the change in graduation rates can be explained by changes in GPA. We add GPA to the decomposition exercise since it is increasing over time and predictive of graduation. We note that this is a “bad control” because it is endogenous to the type of college a student attends, among other things. We include it in the decomposition analysis in the spirit of looking for a mediator rather than interpreting the effects of changing GPA causally. Table 9 presents the same decomposition exercise with one notable change

TABLE 9—DECOMPOSITION EXERCISE: CHANGES IN COLLEGE GRADUATION, BLT + FIRST-YEAR GRADES

	Full sample	Public non-top-50	Public top-50	Private less-selective	Private highly selective	Community college	For-profit schools
NELS:88	48.73	56.12	82.15	72.26	90.50	19.56	25.15
ELS:2002	52.50	61.01	90.71	71.21	92.16	24.33	24.73
Total change	3.77	4.89	8.57	-1.05	1.66	4.77	-0.42
Change due to observables	2.49	2.77	2.44	2.73	5.75	2.57	3.31
Change due to student characteristics	-0.92	-1.65	-0.85	-0.01	2.27	-0.41	7.13
Math test percentile	-0.75	-1.12	0.08	-0.30	0.06	-0.65	0.32
Other student characteristics	-0.17	-0.53	-0.93	0.29	2.21	0.24	6.81
Change due to supply-side factors	-0.16	-1.68	0.00	0.00	0.69	0.09	-0.13
Student-faculty ratios	-0.20	-1.68	0.00	0.00	0.69	0.09	-0.13
Initial school types	0.04						
Change due to GPA	3.57	6.09	3.29	2.74	2.78	2.89	-3.69
Residual	1.27	2.13	6.13	-3.78	-4.08	2.20	-3.73

Notes: These differences were found in the same way as the differences in Table 4, but adding another counterfactual: ELS:2002 graduation rate, using the NELS:88 distribution for GPA and using all other ELS:2002 observables. Furthermore, the change due to other characteristics is found by subtracting change due to GPA and change due to supply-side factors from change due to observables.

to the specification used by BLT: the inclusion of first-year GPA.³⁷ The addition of GPA substantially increases the change in graduation rate due to observables.³⁸ For the full sample, the change due to observables (including first-year GPA) is 2.49 percentage points, or 66 percent of the total change. The change explained by GPA alone is 3.57 percentage points, or 95 percent of the observed change.³⁹ The total change due to observables grows substantially with the inclusion of GPA at all schools. At non-top-50 public schools (the largest category), observables explain 57 percent of the change in graduation. First-year GPA is an imperfect proxy for grade inflation but still explains a substantial portion of the observed change.

A related explanation is that many schools are more efficient in producing degrees. For example, improved access to technology (Farlie and London 2012), the emergence of residential learning communities (Hotchkiss, Moore, and Pitts 2006), the expansion of experiential learning approaches (Hawtrey 2007), and other pedagogical advancements could have improved educational efficiency over this

³⁷ Comparing the results from Table 4 and Table 9 directly is difficult because we use different regressions in each table. As a result, the change in graduation rates explained by each non-GPA factor differs slightly. However, the change in graduation rates due to non-GPA factors tells a very similar story in both settings.

³⁸ Although BLT does not include first-year GPA in its decomposition, it is unlikely to have similar explanatory power in that context due to trends in GPAs during the timeframe they study. Rojstaczer and Healy (2010) document little change in GPAs between the early 1970s (NELS:72 cohort) and early 1990s (NELS:88 cohort). By contrast, Rojstaczer and Healy document significant increases in GPA in subsequent years.

³⁹ We also can add GPA nonlinearly. We do this by replacing the linear effect of GPA with indicators for bins of GPA that are 0.5 GPA points wide in Table A6. When we do this, the results are substantively similar, with GPA explaining slightly less of the change in graduation rates overall. GPA has less explanatory power at selective schools when discretizing first-year GPA. However, we do not allow the coefficients for GPA bins to vary by school type for tractability. This assumes that the same ranges of GPA are predictive for graduation across school types, which may not be true.

time. Measuring efficiency in producing graduates is very difficult, especially if quality is not fixed. While our evidence suggests that increased learning cannot explain rising grades or graduation rates at the public liberal arts college, it is possible that increased learning could explain some of the increases in other settings. However, the gains in efficiency would have to overcome the trends we have documented, including declining resources, increasing tuition, stagnant student preparation, increasing student employment, decreasing study time, etc. Given the steady and large increases in graduation in the face of these trends predicting graduation declines, we find that grade inflation is likely to be at least part of the explanation.

B. Major Choice and Other Explanations

Another possible explanation for increasing college graduation rates is students' choices of majors, if students have moved to majors with higher graduation rates. Table 3 shows that the graduation rates of majors chosen by students stayed very similar or slightly declined; that is, students chose majors that had slightly lower graduation rates in ELS:2002 than they did in NELS:88. To isolate the effect of major choice, we fix major graduation rates at their NELS:88 levels and apply them to the actual major choices made in ELS:2002. We find that predicted graduation rates and actual graduation rates are very similar. In results not presented, we add a student's major graduation rate to the decomposition and find it does not explain much of the change in graduation rates.

Another potential explanation for our results is that colleges may have increased their focus on graduation rates by increasing programs and funding for student success initiatives. This is a difficult mechanism to test. First, we look at staff expenditures using data from IPEDS. Institutions report spending on "other" professional staff "for the primary purpose of performing academic support, student service, and institutional support." This measure likely includes staff working on student success initiatives but also includes things that are unlikely to be related to student success. Trends in this variable can be seen in Table A3. Overall, spending on support programs cannot explain much of the increase in graduation rates because they are largely the same across cohorts. However, there are some increases at more selective schools in measures of "other professional staff," suggesting that these increases have scope to explain some of the increase in graduation rates at these schools. Similarly, we see an overall decrease in instructional expenditures, which represents an alternative way to measure investment (relative to student/faculty ratios). Private schools did see some increase in instructional spending, which could explain some of the increase in graduation. However, when we use this measure instead of student-faculty ratios, we find qualitatively similar results.

We are interested in heterogeneity by school type but are somewhat limited by the size of the sample for some school types. As we noted, the increase in graduation rates across NELS:88 and ELS:2002 is statistically significant overall, for public top-50s, public non-top-50s (at the 10 percent level), and community colleges. We are limited in our ability to assess the relative importance of various factors across school types because there are not statistically significant changes in graduation

rates for all school types. That said, if anything, GPA has larger explanatory power for public universities than for private universities.

VI. Discussion and Conclusion

In this paper, we carefully document that college graduation rates have increased from the 1990s to 2010. This represents a change in the pattern documented by BLT. In contrast to BLT, we do not find that traditional measures of student characteristics or colleges explain much of the change in graduation rates. Rather, we show that student GPAs increased over this time period and that this change can explain much of the increase in graduation rates.

We present evidence, from national survey data and detailed administrative data from nine large public universities, that the increase in GPA is not explained by observable student or institutional characteristics. In our public liberal arts college sample, we find that grades are increasing after controlling for comprehensive final exam performance. Furthermore, in two required science courses, we find that grades are rising over time even when comparing students who received the same score on identical exams. Combined with existing work on trends in student study, college preparation, labor supply, the price of college, and resources per student, our evidence suggests that grade inflation is contributing to increasing grades and graduation rates.

Why did grade point averages increase from the 1990s to 2010? One likely candidate is the recent policy focus on college completion rates. As schools face increased scrutiny and, in some cases, increased funding incentives, they may respond by taking action to increase graduation rates. Changing standards for degree receipt is a low-cost way to increase graduation rates. In support of this interpretation, the increase in graduation rates is concentrated at public schools that have seen more of their funding tied to graduation. However, we find that grades have risen at all school types aside from for-profit colleges.

Further, spending per student declined, suggesting that colleges did not increase spending to help students graduate. Additionally, instructors and departments have incentives to raise grades to improve their student evaluations and enrollments, respectively.

While many are likely to decry the trend in rising grades, the welfare implications of this rise are ambiguous. In either a human capital or a signaling model of education, declining standards of degree receipt, as indicated by rising college grades, would predict that the reduced average skill of graduates would lead to a declining college wage premium.⁴⁰ However, there is evidence that there has been increasing demand for college-educated workers (Autor, Katz, and Kearney 2008), and decreased standards for degree receipt could act to meet this demand and increase economic growth, even if new college graduates have less skill on average than prior cohorts.

⁴⁰It is not clear how grade inflation would affect the earnings return to GPA for college graduates. If grade inflation were uniform, with every student's GPA increased by the same amount, GPAs would become more compressed, as high GPAs are censored. This would imply that a one-point increase in GPA represents a larger change in performance, which would drive up the returns to GPA. However, if the grade inflation is not uniform, it could reduce the signaling value of GPA in the labor market, which would reduce the earnings return to GPA.

Further complicating the interpretation of grade inflation, rising grades may affect major choice and the subsequent earnings returns to education. Majors that see greater levels of grade inflation are likely to attract more students (Butcher, McEwan, and Weerapana 2014). Because majors with traditionally low GPAs, such as those in STEM fields, may have the most room to increase grades, rising grades may lead to an increase in the number of students in these majors.

Finally, if student effort is not fixed, declining standards have ambiguous predictions for overall student effort and subsequent learning. For example, if the objective of most students is to avoid the risk of failure and academic probation, then decreasing standards are likely to reduce effort and learning for all students except those on the margin of passing. However, if students seek to maximize their GPA, decreasing standards may increase learning as decreasing standards increase the GPA returns on effort for all but the highest-performing (A or A+) students. Given the ambiguous implications of grade inflation in higher education and social welfare, future work should consider the effects of grade inflation on learning, major choice, the decision to enroll in graduate school, the skill composition of the workforce, and the college wage premium.

REFERENCES

- Archibald, Robert B., David H. Feldman, and Peter McHenry. 2015. "A Quality-Preserving Increase in Four-Year College Attendance." *Journal of Human Capital* 9 (3): 265–97.
- Arcidiacono, Peter, Esteban Aucejo, Arnaud Maurel, and Tyler Ransom. 2016. "College Attrition and the Dynamics of Information Revelation." NBER Working Paper 22325.
- Ashworth, Jared, and Tyler Ransom. 2019. "Has the College Wage Premium Continued to Rise? Evidence from Multiple U.S. Surveys." *Economics of Education Review* 69: 149–54.
- Autor, David H., Lawrence F. Katz, and Melissa S. Kearney. 2008. "Trends in U.S. Wage Inequality: Revisiting the Revisionists." *Review of Economics and Statistics* 90 (2): 300–323.
- Babcock, Philip, and Mindy Marks. 2011. "The Falling Time Cost of College: Evidence from Half a Century of Time Use Data." *Review of Economics and Statistics* 93 (2): 468–78.
- Bailey, Martha J., and Susan M. Dynarski. 2011. "Inequality in Postsecondary Education." In *Whither Opportunity? Rising Inequality, Schools, and Children's Life Chances*, edited by Greg J. Duncan and Richard J. Murnane. New York: Russell Sage.
- Bar, Talia, Vrinda Kadiyali, and Asaf Zussman. 2009. "Grade Information and Grade Inflation: The Cornell Experiment." *Journal of Economic Perspectives* 23 (3): 93–108.
- Bar, Talia, Vrinda Kadiyali, and Asaf Zussman. 2012. "Putting Grades in Context." *Journal of Labor Economics* 30 (2): 445–78.
- Barr, Andrew. 2019. "Fighting for Education: Veterans and Financial Aid." *Journal of Labor Economics* 37 (2): 509–44.
- Bettinger, Eric, Oded Gurantz, Laura Kawano, Bruce Sacerdote, and Michael Stevens. 2019. "The Long Run Impacts of Merit Aid: Evidence from California's Cal Grant." *American Economic Journal: Economic Policy* 11 (1): 64–94.
- Black, Sandra E., Jeffrey T. Denning, and Jesse Rothstein. 2020. "Winners and Losers? The Effect of Gaining and Losing Access to Selective Colleges on Education and Labor Market Outcomes." NBER Working Paper 26821.
- Blagg, Kristin, and Matthew Chingos. 2016. *Varsity Blues*. Washington, DC: Urban Institute.
- Bleemer, Zachary. 2018. "Top Percent Policies and the Return to Postsecondary Selectivity." Unpublished.
- Blinder, Alan S. 1973. "Wage Discrimination: Reduced Form and Structural Estimates." *Journal of Human Resources* 8 (4): 436–55.
- Boleslavsky, Raphael, and Christopher Cotton. 2015. "Grading Standards and Education Quality." *American Economic Journal: Microeconomics* 7 (2): 248–79.

- Bound, John, Michael F. Lovenheim, and Sarah Turner.** 2010. "Why Have College Completion Rates Declined? An Analysis of Changing Student Preparation and Collegiate Resources." *American Economic Journal: Applied Economics* 2 (3): 129–57.
- Bound, John, Michael F. Lovenheim, and Sarah Turner.** 2012. "Increasing Time to Baccalaureate Degree in the United States." *Education Finance and Policy* 7 (4): 375–424.
- Bound, John, Michael F. Lovenheim, and Sarah Turner.** 2019. "Why Have College Completion Rates Declined? An Analysis of Changing Student Preparation and Collegiate Resources: Dataset." *American Economic Journal: Applied Economics*. <https://doi.org/10.3886/E113752V1>.
- Bozick, R. and E. Lauff.** 2007. "Educational Longitudinal Study of 2002 (ELS:2002)." Washington, DC: National Center for Education Statistics, Institute of Education Sciences, U.S. Department of Education.
- Butcher, Kristin F., Patrick J. McEwan, and Akila Weerapana.** 2014. "The Effects of an Anti-Grade-Inflation Policy at Wellesley College." *Journal of Economic Perspectives* 28 (3): 189–204.
- Castleman, Benjamin L., and Bridget Terry Long.** 2016. "Looking beyond Enrollment: The Causal Effect of Need-Based Grants on College Access, Persistence, and Graduation." *Journal of Labor Economics* 34 (4): 1023–73.
- Cohodes, Sarah R., and Joshua S. Goodman.** 2014. "Merit Aid, College Quality, and College Completion: Massachusetts' Adams Scholarship as an In-Kind Subsidy." *American Economic Journal: Applied Economics* 6 (4): 251–85.
- Deming, David J.** 2017. "Increasing College Completion with a Federal Higher Education Matching Grant." Hamilton Project Policy Proposal 2017-03.
- Deming, David J., Claudia Goldin, and Lawrence F. Katz.** 2012. "The For-Profit Postsecondary School Sector: Nimble Critters or Agile Predators?" *Journal of Economic Perspectives* 26 (1): 139–64.
- Deming, David J., Claudia Goldin, Lawrence F. Katz, and Noam Yuchtman.** 2015. "Can Online Learning Bend the Higher Education Cost Curve?" *American Economic Review* 105 (5): 496–501.
- Deming, David J., and Christopher R. Walters.** 2017. "The Impact of State Budget Cuts on U.S. Postsecondary Attainment." NBER Working Paper 23736.
- Denning, Jeffrey T.** 2019. "Born under a Lucky Star: Financial Aid, College Completion, and Credit Constraints." *Journal of Human Resources* 54 (3): 760–84.
- Denning, Jeffrey T., Benjamin M. Marx, and Lesley J. Turner.** 2019. "ProPelled: The Effects of Grants on Graduation, Earnings, and Welfare." *American Economic Journal: Applied Economics* 11 (3): 193–224.
- Denning, Jeffrey T., Eric R. Eide, Kevin J. Mumford, Richard W. Patterson, and Merrill Warnick.** 2022. "Replication Data for: Why Have College Completion Rates Increased? An Analysis of Rising Grades." American Economic Association [publisher], Inter-university Consortium for Political and Social Research [distributor]. <https://doi.org/10.3886/E136346V1>.
- Fairlie, Robert W., and Rebecca A. London.** 2012. "The Effects of Home Computers on Educational Outcomes: Evidence from a Field Experiment with Community College Students." *Economic Journal* 122 (561): 727–53.
- Gershenson, Seth.** 2018. *Grade Inflation in High Schools (2005–2016)*. Washington, DC: Thomas B. Fordham Institute.
- Goodman, Joshua, Michael Hurwitz, and Jonathan Smith.** 2017. "College Access, Initial College Choice and Degree Completion." *Journal of Labor Economics* 35 (3): 829–67.
- Griffith, Amanda, and Veronica Sovero.** 2019. "Under Pressure: Grade Inflation by Academics." Unpublished.
- Hawtrey, K.** 2007. "Using Experiential Learning Techniques." *Journal of Economic Education* 38 (2): 143–52.
- Hess, Frederick M., and Lanae Erickson Hatalsky.** 2018. *Elevating College Completion*. Washington, DC: American Enterprise Institute.
- Hillman, Nicholas W., Alisa Hicklin Fryar, and Valerie Crespín-Trujillo.** 2018. "Evaluating the Impact of Performance Funding in Ohio and Tennessee." *American Educational Research Journal* 55 (1): 144–70.
- Hillman, Nicholas W., David A. Tandberg, and Alisa H. Fryar.** 2015. "Evaluating the Impacts of 'New' Performance Funding in Higher Education." *Educational Evaluation and Policy Analysis* 37 (4): 501–19.
- Hillman, Nicholas W., David A. Tandberg, and Jacob P.K. Gross.** 2014. "Performance Funding in Higher Education: Do Financial Incentives Impact College Completions?" *Journal of Higher Education* 85 (6): 826–57.

- Hotchkiss, Julie L., Robert E. Moore, and M. Melinda Pitts.** 2006. "Freshman Learning Communities, College Performance, and Retention." *Education Economics* 14 (2): 197–210.
- Jaeger, David A., and Marianne E. Page.** 1996. "Degrees Matter: New Evidence on Sheepskin Effects in the Returns to Education." *Review of Economics and Statistics* 78 (4): 733–40.
- Long, Bridget Terry.** 2018. *The College Completion Landscape: Trends, Challenges, and Why it Matters*. Washington, DC: American Enterprise Institute and Third Way Institute.
- Krautmann, Anthony C., and William Sander.** 1999. "Grades and Student Evaluations of Teachers." *Economics of Education Review* 18 (1): 59–63.
- Langbein, Laura.** 2008. "Management by Results: Student Evaluation of Faculty Teaching and the Mis-measurement of Performance." *Economics of Education Review* 27 (4): 417–28.
- Ma, Jennifer, Sandy Baum, Matea Pender, and Meredith Welch.** 2017. *Trends in College Pricing 2017*. New York: College Board.
- National Center for Education Statistics.** 2013. *The Nation's Report Card: Trends in Academic Progress 2012*. Washington, DC: Institute of Education Sciences, U.S. Department of Education.
- National Center for Education Statistics.** 1988. "National Education Longitudinal Study of 1988 (NELS:88)." <https://nces.ed.gov/surveys/nels88/index.asp> (accessed July 15, 2018).
- National Center for Education Statistics.** 2017. "Integrated Postsecondary Education Data System (IPEDS)." <https://nces.ed.gov/ipeds/> (accessed July 1, 2018).
- Oaxaca, Ronald.** 1973. "Male-Female Wage Differentials in Urban Labor Markets." *International Economic Review* 14 (3): 693–709.
- Ohland, Matthew, and Russell Long.** 2020. "MIDFIELD Data." Multiple-Institution Database for Investigating Engineering Longitudinal Development, Purdue University, West Lafayette, IN. https://engineering.purdue.edu/MIDFIELD/using_data.html (accessed April 15, 2019).
- Oreopoulos, Philip, and Uros Petronijevic.** 2013. "Making College Worth it: A Review of the Returns to Higher Education." *Future of Children* 23 (1): 41–65.
- Ost, Ben, Victor Pan, and Douglas A. Webber.** 2018. "The Returns to College Persistence for Marginal Students: Regression Discontinuity Evidence from University Dismissal Policies." *Journal of Labor Economics* 36 (3): 779–805.
- Pattison, Evangeleen, Eric Grodsky, and Chandra Muller.** 2013. "Is the Sky Falling? Grade Inflation and the Signaling Power of Grades." *Educational Researcher* 42 (5): 259–65.
- Rojstaczer, Stuart, and Christopher Healy.** 2010. "Grading in American Colleges and Universities." *Teachers College Record* 4: 1–6.
- Rojstaczer, Stuart, and Christopher Healy.** 2012. "Where A is Ordinary: The Evolution of American College and University Grading, 1940–2009." *Teachers College Record* 114 (7): 1–23.
- Steven Ruggles, Sarah Flood, Ronald Goeken, Josiah Grover, Erin Meyer, Jose Pacas, and Matthew Sobek.** 2019. "IPUMS USA: Version 9.0." Minneapolis, MN: IPUMS. <https://doi.org/10.18128/D010.V9.0> (accessed April 15, 2020).
- Schudde, Lauren, and Judith Scott-Clayton.** 2016. "Pell Grants as Performance-Based Scholarships? An Examination of Satisfactory Academic Progress Requirements in the Nation's Largest Need-Based Aid Program." *Research in Higher Education* 57 (8): 943–67.
- Scott-Clayton, Judith.** 2011. "On Money and Motivation: A Quasi-experimental Analysis of Financial Incentives for College Achievement." *Journal of Human Resources* 46 (3): 614–46.
- Scott-Clayton, Judith.** 2012. "What Explains Trends in Labor Supply among U.S. Undergraduates?" *National Tax Journal* 65 (1): 181–210.
- Shapiro, D., A. Dundar, F. Huie, P.K. Wakhungu, X. Yuan, A. Nathan, and A. Bhimdiwali.** 2017. *Completing College: A National View of Student Completion Rates – Fall 2011 Cohort*. (Signature Report No.14). Herndon, VA: National Student Clearinghouse Research Center.
- Tandberg, David A., and Nicholas W. Hillman.** 2014. "State Higher Education Performance Funding: Data, Outcomes, and Policy Implications." *Journal of Education Finance* 39 (3): 222–43.
- Valletta, Robert G.** 2016. "Recent Flattening in the Higher Education Wage Premium: Polarization, Skill Downgrading, or Both?" NBER Working Paper 22935.
- Zimmerman, Seth D.** 2014. "The Returns to College Admission for Academically Marginal Students." *Journal of Labor Economics* 32 (4): 711–54.

This article has been cited by:

1. Darren Page, Travis Williams. 2024. One email to students: Can a light touch intervention make a difference?. *The Journal of Economic Education* **39**, 1-15. [[Crossref](#)]
2. Xiao Xu. 2024. Zero-knowledge proofs in education: a pathway to disability inclusion and equitable learning opportunities. *Smart Learning Environments* **11**:1. . [[Crossref](#)]
3. Alyssa M. Lederer, Sara B. Oswalt, Mary T. Hoban, Melissa N. Rosenthal. 2024. Health-Related Behaviors and Academic Achievement Among College Students. *American Journal of Health Promotion* **38**:8, 1129-1139. [[Crossref](#)]
4. Andrea N. Bowns. 2024. A Systematic Review of Variables Used in Physical Therapist Education Program Admissions Part 1: Cognitive Variables. *Journal of Physical Therapy Education* **38**:3, 181-191. [[Crossref](#)]
5. Timothy F. Harris, C. Lockwood Reynolds. 2024. COVID-19 diagnoses and university student performance: evidence from linked administrative health and education data. *Empirical Economics* **224**. . [[Crossref](#)]
6. Michael Nieswiadomy, Myungsup Kim. 2024. Grade inflation at 34 public universities in Texas (2012–2019). *Applied Economics* 1-13. [[Crossref](#)]
7. Kristin Butcher, Patrick J. McEwan, Akila Weerapana. 2024. Making the (Letter) Grade: The Incentive Effects of Mandatory Pass/Fail Courses. *Education Finance and Policy* **19**:3, 385-408. [[Crossref](#)]
8. Anne C. Fletcher, Brittany N. Alligood, Michaeline Jensen, Suzanne Vrshek-Schallhorn. 2024. The College Student Adaptive and Maladaptive Academic Behaviors Scale: Development, Reliability, and Validity. *Journal of College Student Retention: Research, Theory & Practice* **9**. . [[Crossref](#)]
9. Seth Gershenson, Stephen B. Holt, Adam Tyner. 2024. Making the grade: The effect of teacher grading standards on student outcomes. *Contemporary Economic Policy* **42**:2, 305-318. [[Crossref](#)]
10. Eric Floyd, Sorabh Tomar, Daniel J. Lee. 2024. Making the Grade (But Not Disclosing It): How Withholding Grades Affects Student Behavior and Employment. *Management Science* **70**:4, 2497-2517. [[Crossref](#)]
11. Alicia McIntire, Isaac Calvert, Jessica Ashcraft. 2024. Pressure to Plagiarize and the Choice to Cheat: Toward a Pragmatic Reframing of the Ethics of Academic Integrity. *Education Sciences* **14**:3, 244. [[Crossref](#)]
12. Veronica Sovero, Amanda L. Griffith. 2024. More A's and I get to stay? How grading influences employment outcomes for contingent faculty. *Education Economics* **193**, 1-16. [[Crossref](#)]
13. Naem Bajwa, Thomas Tudor, Otmar Varela, Karen Leonard. 2024. Teaching in Higher Education after COVID-19: Optimizing Faculty Time and Effort Using a Proposed Model. *Education Sciences* **14**:2, 121. [[Crossref](#)]
14. Trang Pham, Stephanie Potochnick. 2024. Undergraduate Grading Practices of International and Domestic Faculty: Evidence From Three Large U.S. Public Universities. *AERA Open* **10**. . [[Crossref](#)]
15. Nicole M. V. Ross, Steven W. Hemelt. 2024. Banking on Dual Credit: Broadening Opportunities to Earn College Credit in High School and the Transition to College. *Educational Researcher* **53**:1, 36-45. [[Crossref](#)]
16. David Eubanks. 2023. Part 1: Assessment Standards are Broken. *Assessment Update* **35**:6, 1-16. [[Crossref](#)]

17. Megan R. Good. 2023. Part 2: For the Sake of Educational Quality—Let's Minimize Bureaucracy and Maximize Impact. *Assessment Update* 35:6, 4-5. [[Crossref](#)]
18. Aaron Phipps, Alexander Amaya. 2023. Are students time constrained? Course load, GPA, and failing. *Journal of Public Economics* 225, 104981. [[Crossref](#)]
19. Makoto Shimoji. 2023. Setting an exam as an information design problem. *International Journal of Economic Theory* 19:3, 559-579. [[Crossref](#)]
20. Винокурова О.С.. 2023. УРОВЕНЬ ЗАВЕРШЕНИЯ ПРОФЕССИОНАЛЬНОГО ОБРАЗОВАНИЯ: МЕЖДУНАРОДНЫЙ ОПЫТ И ВОЗМОЖНОСТИ ДЛЯ РОССИИ. *Человеческий капитал* :8(176), 77-85. [[Crossref](#)]
21. S. Abby Young, Ann M. Beutel, Stephanie W. Burge. 2023. High Hopes: Gender Trends in Educational Expectations for Graduate and Professional School, 1976-2019. *The Sociological Quarterly* 64:3, 493-519. [[Crossref](#)]
22. Stephanie A. Brescia, Cara L. Cuite. 2022. Underestimating College Student Food Insecurity: Marginally Food Secure Students May Not Be Food Secure. *Nutrients* 14:15, 3142. [[Crossref](#)]